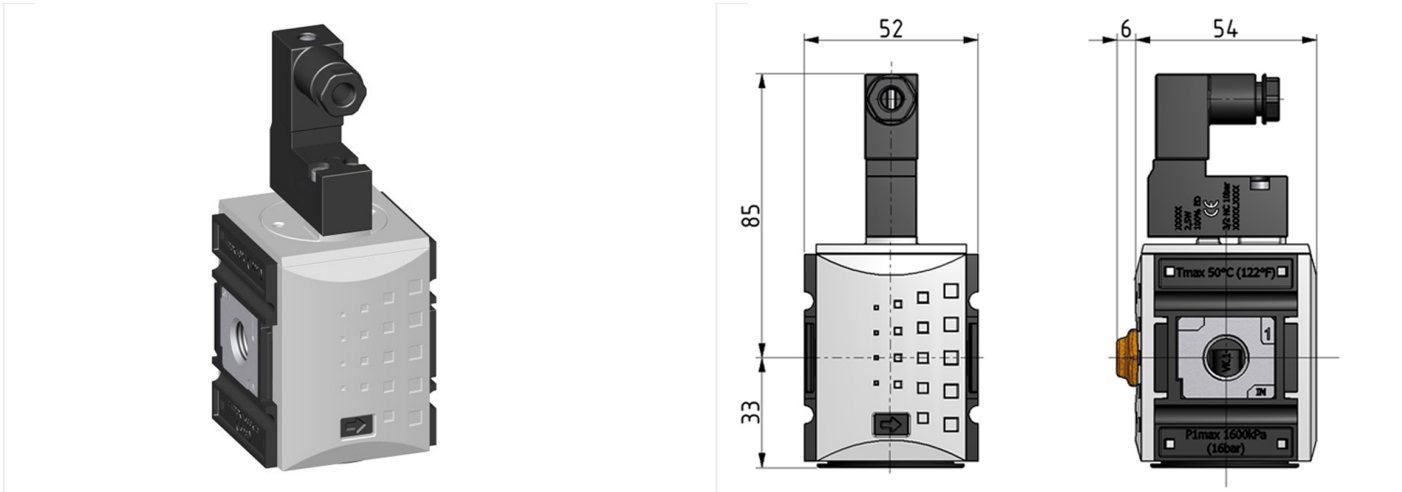


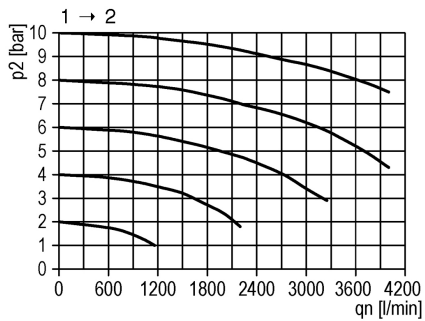
System extensions of the Futura series

3/2 Directional control valve G3/8 electric operated 24V=

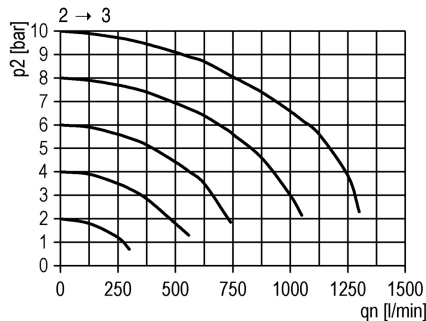


| type | part-number | series | port size | flow rate | weight |
|-------------|-------------|--------|-----------|------------|----------|
| KSOV-138/24 | 94011.DD02 | Futura | G 3/8 | 2000 l/min | 0.269 kg |

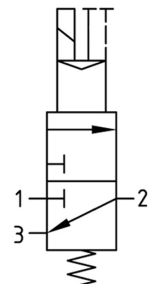
flow characteristic



rear exhaust



symbol



technical data

- **description:** 3/2 poppet valve
- **medium:** compressed air, neutral gases
- **supply pressure P1 min.:** 2 bar
- **supply pressure P1 max.:** 10 bar
- **temperature range:** -10°C - +50°C
- **input signal:** 24V=
- **exhaust:** G 1/4
- **relative switch on duration:** 100%
- **capacity:** 2,5 W
- **protection class:** IP 65 according to DIN 40050
- **electrical connection:** socket coupling EN 175301-803, form C / ISO 15217 poles 2+PE (included in scope of delivery)

accessories



- mounting bracket:
[KBW 1-1225](#)



- coupling kit wall mounting:
[KKOP.1W](#)