

# microvalvole

microvalves



- Microvalvole a otturatore NC e NA  
*NC and NO poppet microvalves*
- Installazione in qualsiasi posizione  
*Installation in any position*
- Attacchi filettati M5 o raccordi automatici per tubo  $\varnothing 4$   
*M5 threaded ports or push-in fittings for  $\varnothing 4$  tube*
- Bassa forza di azionamento  
*Low actuating force*
- Versione con adattatore (foro  $\varnothing 22$ ) per montaggio a pannello  
*Version with adaptor for panel mounting (with  $\varnothing 22$  hole)*
- Esecuzioni speciali a richiesta  
*Special versions on request*



## Materiali

Corpo: alluminio 11S

Molla: INOX

Guarnizioni: NBR

Parti interne: ottone OT58

## Materials

Body: aluminium 11S

Spring: stainless steel

Seals: NBR

Internal parts: brass OT58

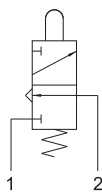
Diametro nominale <i>Nominal orifice</i>	2.5 mm
Portata nominale a 6 bar <i>Nominal flow rate at 6 bar</i>	100 NI/min
Temperatura di esercizio <i>Temperature range</i>	max +60°C
Pressione di esercizio <i>Working pressure</i>	2 ... 10 bar 0.2 ... 1 MPa
Forza di azionamento <i>Actuating force</i>	6 N
Fluido <i>Fluid</i>	Aria filtrata 50 $\mu$ con o senza lubrificazione <i>50<math>\mu</math> filtered, lubricated or non lubricated air</i>



## 304 MA

3/2 NC raccordi automatici per tubo  $\varnothing 4$  (sotto), pulsante

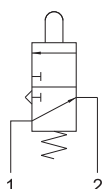
3/2 NC push-in fittings for  $\varnothing 4$  tube (ports on the bottom), tappet



## 314 MA

3/2 NA raccordi automatici per tubo  $\varnothing 4$  (sotto), pulsante

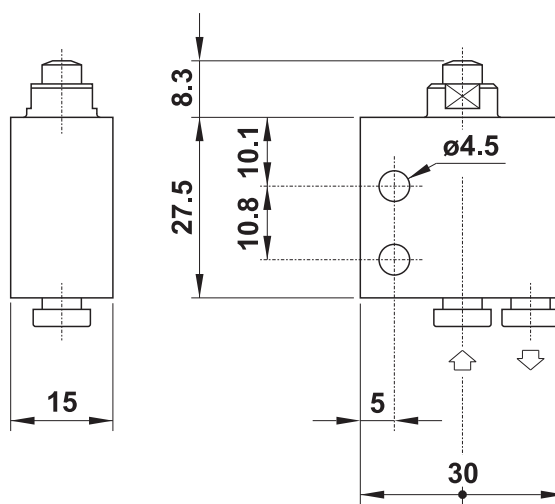
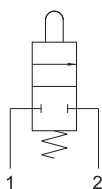
3/2 NO push-in fittings for  $\varnothing 4$  tube (ports on the bottom), tappet



## 204 MA

2/2 NC raccordi automatici per tubo  $\varnothing 4$  (sotto), pulsante

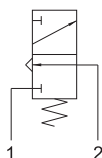
2/2 NC push-in fittings for  $\varnothing 4$  tube (ports on the bottom), tappet



## 304 MB

3/2 NC raccordi automatici per tubo  $\varnothing 4$  (sotto), interfaccia per attuatore da pannello

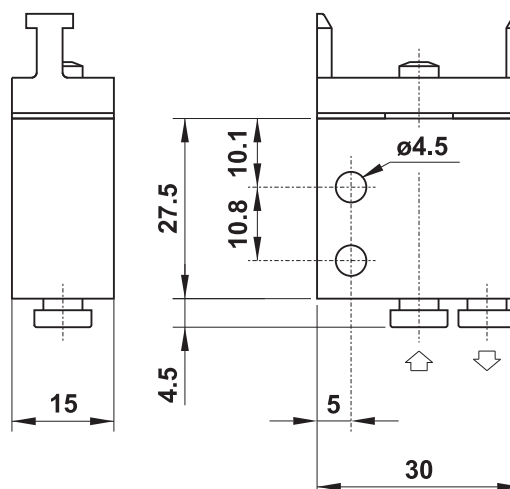
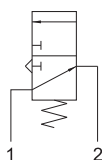
3/2 NC push-in fittings for  $\varnothing 4$  tube (ports on the bottom), actuator adaptor for panel mounting



## 314 MB

3/2 NA raccordi automatici per tubo  $\varnothing 4$  (sotto), interfaccia per attuatore da pannello

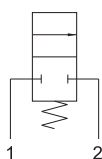
3/2 NO push-in fittings for  $\varnothing 4$  tube (ports on the bottom), actuator adaptor for panel mounting



## 204 MB

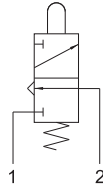
2/2 NC raccordi automatici per tubo  $\varnothing 4$  (sotto), interfaccia per attuatore da pannello

2/2 NC push-in fittings for  $\varnothing 4$  tube (ports on the bottom), actuator adaptor for panel mounting



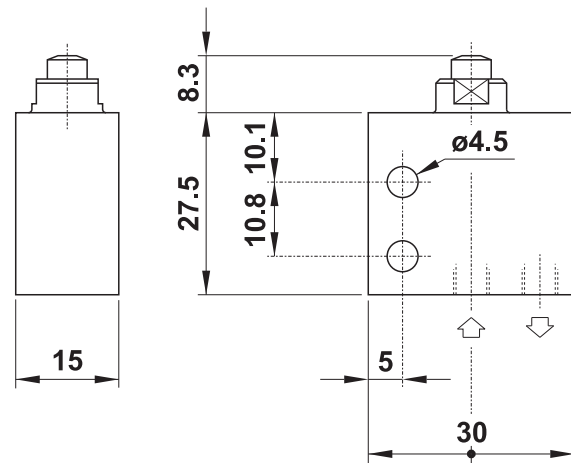
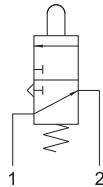
## 305 MA

3/2 NC attacchi filettati M5 (sotto),  
pulsante  
3/2 NC M5 threaded ports (on the bottom),  
tappet



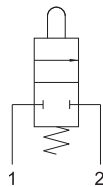
## 315 MA

3/2 NA attacchi filettati M5 (sotto),  
pulsante  
3/2 NO M5 threaded ports (on the bottom),  
tappet



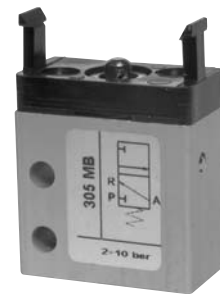
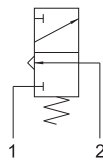
## 205 MA

2/2 NC attacchi filettati M5 (sotto),  
pulsante  
2/2 NC M5 threaded ports (on the bottom),  
tappet



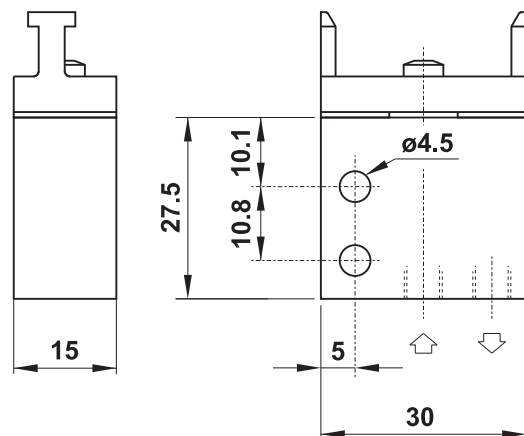
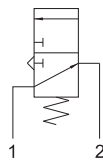
## 305 MB

3/2 NC attacchi filettati M5 (sotto),  
interfaccia per attuatore da pannello  
3/2 NC M5 threaded ports (on the bottom),  
actuator adaptor for panel mounting



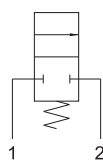
## 315 MB

3/2 NA attacchi filettati M5 (sotto),  
interfaccia per attuatore da pannello  
3/2 NO M5 threaded ports (on the bottom),  
actuator adaptor for panel mounting



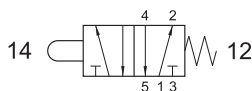
## 205 MB

2/2 NC attacchi filettati M5 (sotto),  
interfaccia per attuatore da pannello  
2/2 NC M5 threaded ports (on the bottom),  
actuator adaptor for panel mounting





## 504 MB UL

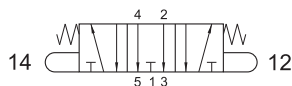


5/2 raccordi automatici per tubo  $\varnothing 4$  (laterali),  
interfaccia per attuatore da pannello

5/2 *push-in fittings for  $\varnothing 4$  tube (ports on the side),  
actuator adaptor for panel mounting*



## 2.304 MB UL



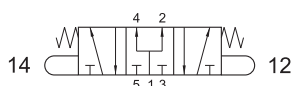
5/3 centri aperti

raccordi automatici per tubo  $\varnothing 4$  (laterali),  
interfaccia per attuatore da pannello

5/3 *open centres*

*push-in fittings for  $\varnothing 4$  tube (ports on the side),  
actuator adaptor for panel mounting*

## 2.314 MB UL

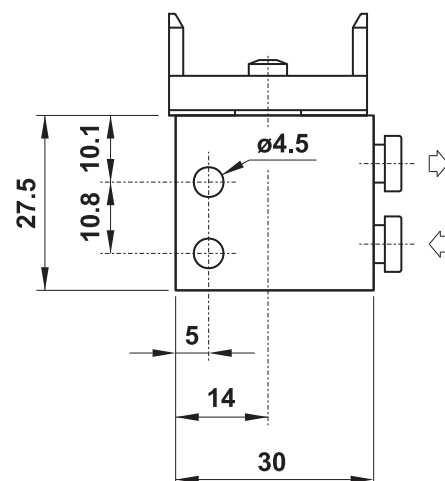
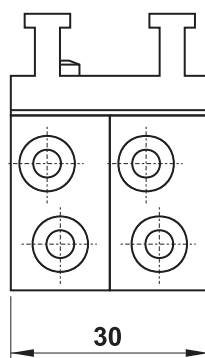


5/3 centri in pressione

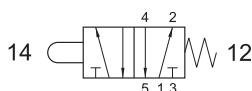
raccordi automatici per tubo  $\varnothing 4$  (laterali),  
interfaccia per attuatore da pannello

5/3 *pressurized centres*

*push-in fittings for  $\varnothing 4$  tube (ports on the side),  
actuator adaptor for panel mounting*



## 505 MB UL

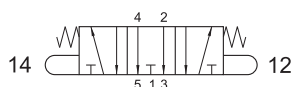


5/2 attacchi filettati M5 (laterali),  
interfaccia per attuatore da pannello

5/2 *M5 threaded ports (on the side),  
actuator adaptor for panel mounting*



## 2.305 MB UL



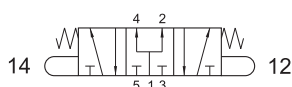
5/3 centri aperti

attacchi filettati M5 (laterali),  
interfaccia per attuatore da pannello

5/3 *open centres*

*M5 threaded ports (on the side),  
actuator adaptor for panel mounting*

## 2.315 MB UL

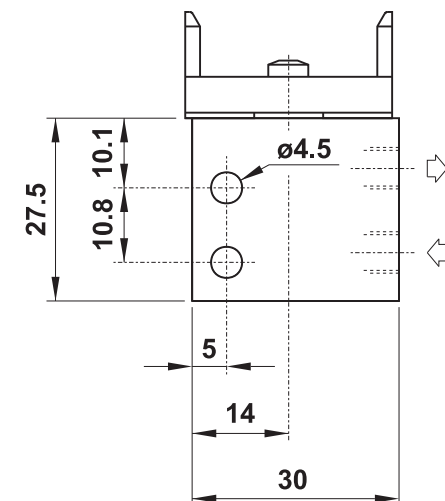
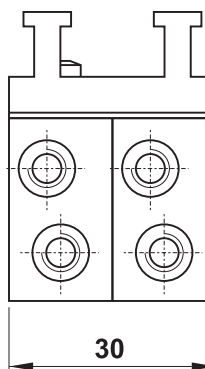


5/3 centri in pressione

attacchi filettati M5 (laterali),  
interfaccia per attuatore da pannello

5/3 *pressurized centres*

*M5 threaded ports (on the side),  
actuator adaptor for panel mounting*



# attuatori da pannello

actuators for panel mounting



## pulsante protetto protected push button

codice code	colori standard standard colours
PR1/NRB	ROSSO, NERO e BIANCO (forniti assieme nel kit) red, black and white (supplied in kit)

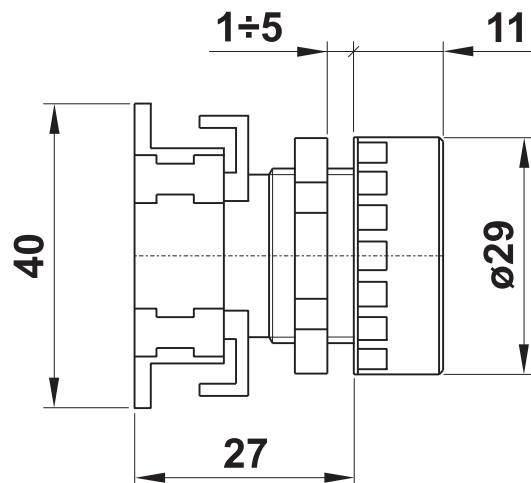
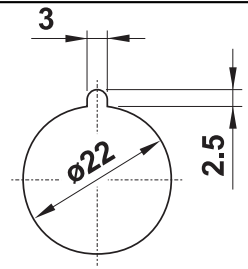
- I seguenti colori sono disponibili ordinandoli in aggiunta al kit standard  
The following colours can be ordered separately

codice code	colore colour
DCV1	VERDE [green]
DCG1	GIALLO [yellow]
DCA1	AZZURRO [light blue]
DCB1	BIANCO [white]

codice code	colore colour
DCN1	NERO [black]
DCR1	ROSSO [red]

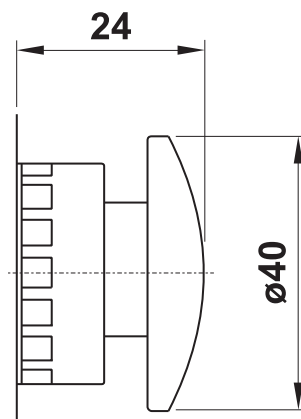
Foro per montaggio a pannello  
con asola antirotazione

Panel mounting hole with antirotation  
feature



## fungo ø40 ø40 mushroom

codice code	descrizione description	colore colour
PF2/40	monostabile assiale [axial mono-stable]	ROSSO [red]
PF1/40	monostabile assiale [axial mono-stable]	NERO [black]
PFB2/40	sblocco a rotazione [turn to unlock]	ROSSO [red]

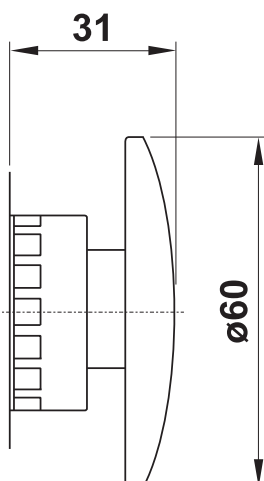


# attuatori da pannello

actuators for panel mounting

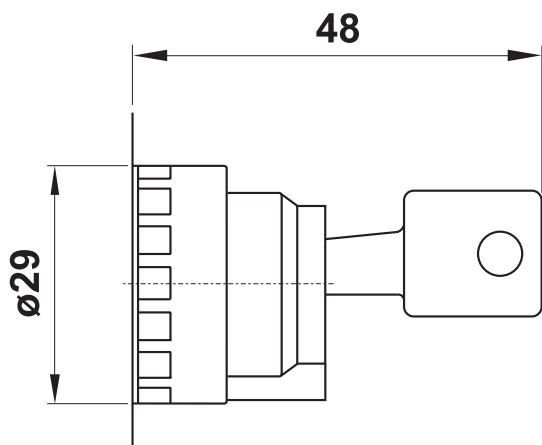


**fungo ø60**  
*ø60 palm*



codice <i>code</i>	descrizione <i>description</i>	colore <i>colour</i>
PFBA2	oscillante <i>[multi-directional]</i>	ROSSO <i>[red]</i>
PFB2/60	sblocco a rotazione <i>[turn to unlock]</i>	ROSSO <i>[red]</i>

**selettore a chiave**  
*key selector*



codice <i>code</i>	funzione <i>function</i>	posizione di estrazione chiave <i>position to pull the key out</i>
SSC/CD-V	0 1	solo centrale <i>[only in central position]</i>
SSC/CD-Z	0 1	ambedue <i>[both positions]</i>
SSC/E-V	2 0 1	solo centrale <i>[only in central position]</i>

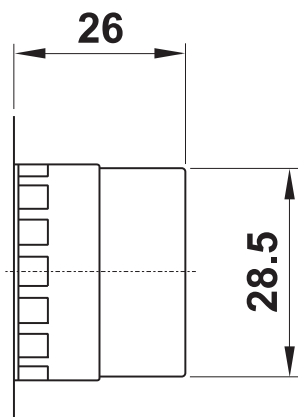
# attuatori da pannello

actuators for panel mounting



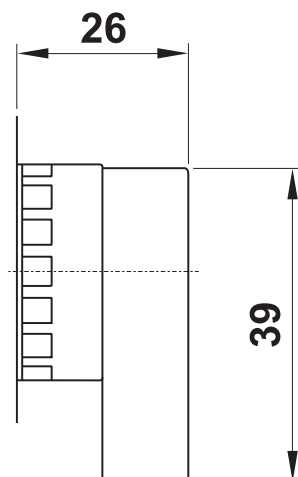
## selettore leva corta short lever selector

codice code	colore colour	funzione function
SS1/CD	NERO black	0 1
SS1/CD-R	NERO black	0 ← 1
SS1/E	NERO black	2 0 1
SS1/E-RC	NERO black	2 → 0 ← 1



## selettore leva lunga long lever selector

codice code	colore colour	funzione function
SSP1/CD	NERO black	0 1
SSP1/CD/R	NERO black	0 ← 1
SSP1/E	NERO black	2 0 1
SSP1/E-RC	NERO black	2 → 0 ← 1



Materiale Material	Materiale plastico ad alte prestazioni High performance plastic material
Grado di protezione Protection degree	IP 55
Corrispondenza alle norme According to norms	EN 60947-5-1 VDE 0660 IEC 947-5
Temperatura di esercizio Temperature range	max +55°C
Durata meccanica Mechanical life time	500000 manovre [actuatiions]