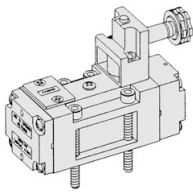


SIV400

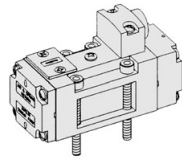
ISO-1

Solenoid / Pneumatic Valves

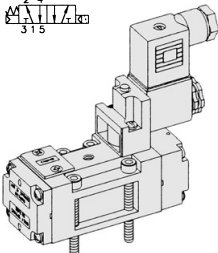
- 5/2, 5/3
- 40mm Body Width
- 30mm CNOMO PILOT
- Sub-Base Mounting Type
- Transition Flow 1600ℓ/min (5bar)



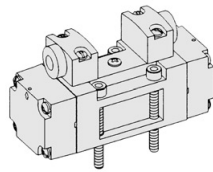
SIV411-IP-



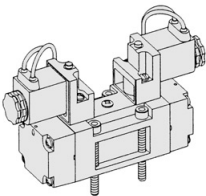
SIP411



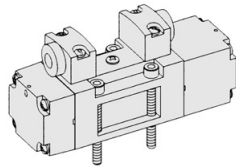
SIV411-EP-SC2-CN2-**-



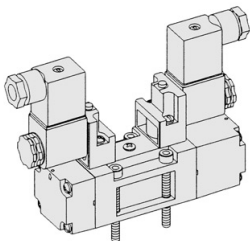
SIP420



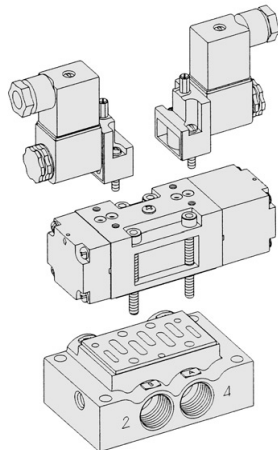
SIV420-IP-SG2-**-



SIP433



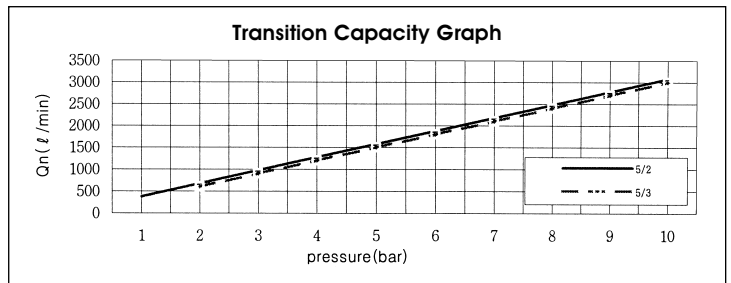
SIV433-IP-SC2-CN2-**-



** : Voltage Selection (see page 62)

SPECIFICATION

| ITEM | SERIES | SOLENOID, PNEUMATIC | |
|--|--------|---|-------------------|
| | | FUNCTION | |
| | | 5 Port 2 Position | 5 Port 3 Position |
| Fluids | | Compressed Air & Inert Gases | |
| Pressure(bar) | | 1.5~10.0 | 2.0~10.0 |
| Eff. Sectional Area(mm ²)-5bar | | 30.0 | 25.0 |
| Ambient & Fluid Temp. | | 5~60°C (41~140°F) | |
| Response Time(5bar) | | 30ms or Less | 40ms or Less |
| Max. Working Frequency | | 3c/sec | 1c/sec |
| Lubrication | | Not Required(Use ISO VG32 #) | |
| Manual Override | | Push Button(Standard), Lever Lock(Option) | |
| Coil Insulation Class | | F-Class or Equivalent | |
| Permissible Voltage Variation | | ±10% of Rated Voltage | |
| Off Min. Residual Voltage | | AC:20% or Less / DC:10% or Less | |
| Power Consumption | | Holding-AC:5.5VA(60Hz) / DC:2.5W | |



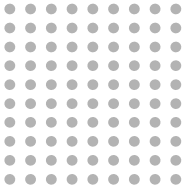
- ### The Material of Parts
- Valve Body : Die-Cast Aluminium
 - Spool : Aluminium
 - Seals : NBR
 - Spring : Stainless
 - Cap : Zinc Pressure Die-Cast
 - Pilot Parts : Glass Filled Nylon
 - Armature : Stainless Steel
 - Armature Seals : Viton

* The specification on each item can be amended without any prenotice to improve a performance.
 * The specification on each item can be different from actual specification.

ORDERING NO.

SIV4 1 1 - I P - SC2 - CN2 - A2

| Valve Series | Function | Return Method | Int/Ext. Pilot | Manual Operator | Solenoid Coil Type | Connector Type | Voltage | | | | | | | |
|----------------------------------|----------|---------------------|----------------|-----------------|--------------------|----------------|---------|------------------|-----|-------------------------------|-----|---------------------------------------|----|---------|
| SIV4 : Solenoid Valve | 0 | None | 0 | None | 0 | None | 0 | | | | | | | |
| | 1 | 5/2 Single | 1 | Air + Spring | I | Internal Pilot | P | Push Non-Locking | SC2 | 3 Pin Connector Coil | CN2 | Normal Connector | A2 | AC 220V |
| | 2 | 5/2 Double | 2 | Air | E | External Pilot | P | Push Non-Locking | SG2 | Grommet/Flying Leads | CD2 | Connector With LED | A1 | AC 110V |
| SIP4 : Pneumatic Valve | 3 | 5/3 Closed Center | 3 | Spring | L | Lever Locking | L | Lever Locking | SD2 | Grommet/Flying Leads With LED | CZ2 | Connector With LED & Surge Suppressor | A4 | AC 24V |
| | 4 | 5/3 Open Center | | | | | | | | | | | D4 | DC 24V |
| | 5 | 5/3 Pressure Center | | | | | | | | | | | D2 | DC 12V |



Solenoid & Pilot Actuated Spool Valves

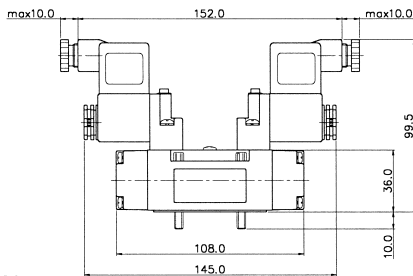
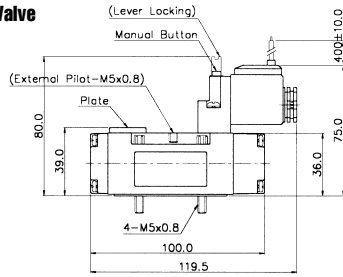
40mm Body Width

5Port 2Position Solenoid Valve

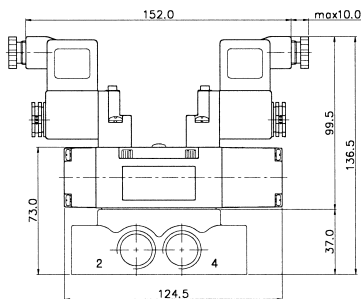
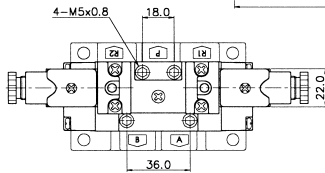
Single Solenoid
SIV411-IP-SD2-***



External Pilot
SIV411-EP-SD2-***

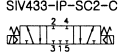


Double Solenoid
SIV420-IP-SC2-CN2-***

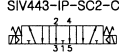


5Port 3Position Solenoid Valve

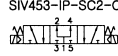
Closed Center
SIV433-IP-SC2-CN2-***



Exhaust Center
SIV443-IP-SC2-CN2-***

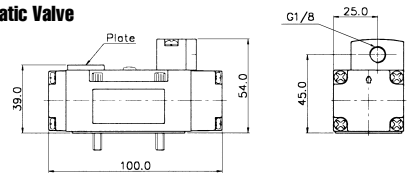


Pressure Center
SIV453-IP-SC2-CN2-***

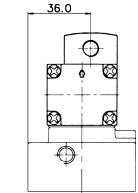
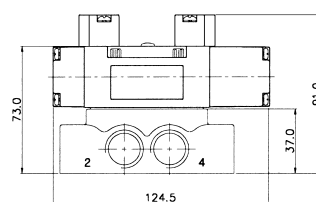
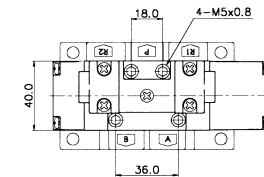
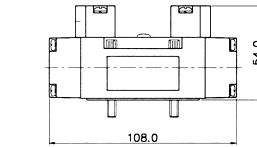
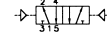


5Port 2Position Pneumatic Valve

Single Pneumatic
SIP411

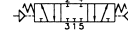


Double Pneumatic
SIP420

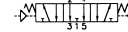


5Port 3Position Pneumatic Valve

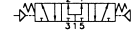
Closed Center
SIP433



Exhaust Center
SIP443



Pressure Center
SIP453



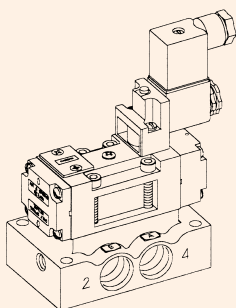
Sub Base Ordering Code

| SIB4 1 - S | | | |
|-----------------------|---------------|---------|--|
| Base Series | Port & Thread | | Function |
| SIB4 | 0 | None | S |
| SIV400 Solenoid Valve | 1 | G 1/4 | Single Station Sub Base, Without Pilot Ports |
| | 2 | G 3/8 | |
| | 3 | G 1/2 | Single Station Sub Base, With Pilot Ports |
| | 6 | NPT 1/4 | |
| | 7 | NPT 3/8 | |
| | 8 | NPT 1/2 | |

SIB40 SINGLE SUB BASE

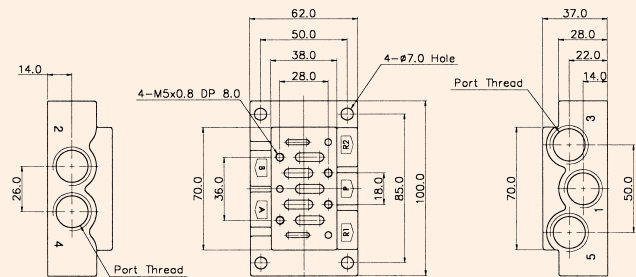
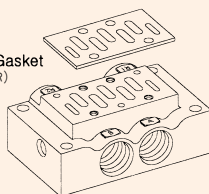
(SIV400 Solenoid & Pneumatic Valve Use Sub Base)

Single Station Sub Base Dimension



Sub Base Gasket
(Material: NBR)

Sub Base
(Material: Al)



Port Thread

| MODEL | A(4),B(2) | P(1) | R(1),R2(3) |
|------------|-----------|-------|------------|
| SIB41-S(P) | G 1/4 | G 1/4 | G 3/8 |
| SIB42-S(P) | G 3/8 | G 3/8 | G 3/8 |
| SIB43-S(P) | G 1/2 | G 1/2 | G 1/2 |