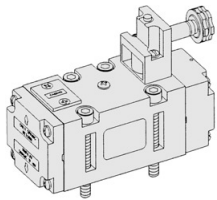


# SIV500

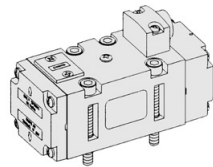
ISO-2

Solenoid / Pneumatic Valves

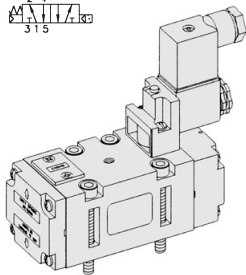
- 5/2, 5/3
- 50mm Body Width
- 30mm CNOMO PILOT
- Sub-Base Mounting Type
- Transition Flow 3500ℓ/min (5bar)



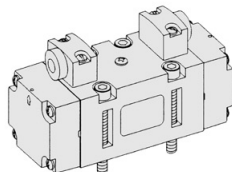
SIV511-IP-



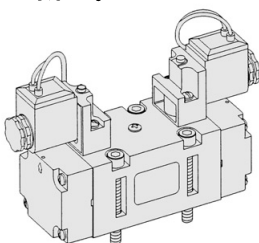
SIP511



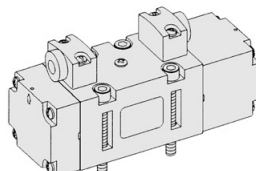
SIV511-EP-SC2-CN2-\*\*



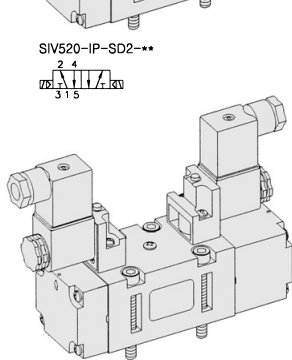
SIP520



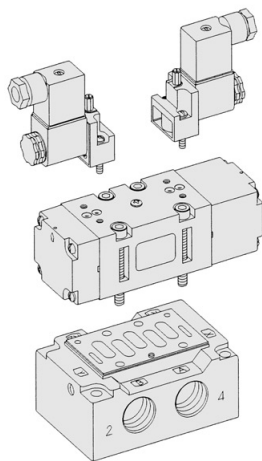
SIV520-IP-SD2-\*\*



SIP533



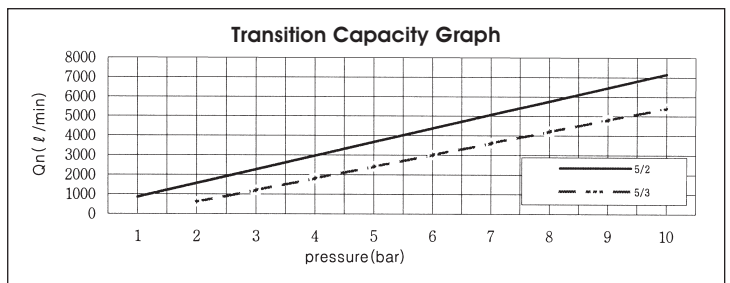
SIV533-IP-SC2-CN2-\*\*



\*\* : Voltage Selection (see page 62)

## SPECIFICATION

ITEM	SERIES	SOLENOID, PNEUMATIC	
		5 Port 2 Position	5 Port 3 Position
Fluids		Compressed Air & Inert Gases	
Pressure(bar)		1.5~10.0	2.0~10.0
Eff. Sectional Area(mm <sup>2</sup> )-5bar		65.0	50.0
Ambient & Fluid Temp.		5~60°C (41~140°F)	
Response Time(5bar)		35ms or Less	45ms or Less
Max. Working Frequency		3c/sec	1c/sec
Lubrication		Not Required(Use ISO VG32 #)	
Manual Override		Push Button(Standard), Lever Lock(Option)	
Coil Insulation Class		F-Class or Equivalent	
Permissible Voltage Variation		±10% of Rated Voltage	
Off Min. Residual Voltage		AC:20% or Less / DC:10% or Less	
Power Consumption		Holding-AC:5.5VA(60Hz) / DC:2.5W	



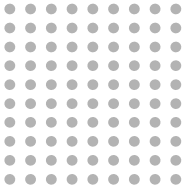
- ### The Material of Parts
- Valve Body : Die-Cast Aluminium
  - Spool : Aluminium
  - Seals : NBR
  - Spring : Stainless
  - Cap : Zinc Pressure Die-Cast
  - Pilot Parts : Glass Filled Nylon
  - Armature : Stainless Steel
  - Armature Seals : Viton

\* The specification on each item can be amended without any prenotice to improve a performance.  
 \* The specification on each item can be different from actual specification.

## ORDERING NO.

**SIV5 1 1 - I P - SC2 - CN2 - A2**

Valve Series	Function	Return Method	Int/Ext. Pilot	Manual Operator	Solenoid Coil Type	Connector Type	Voltage	
<b>SIV5 :</b> Solenoid Valve	1	5/2 Single	0 None	I Internal Pilot	0 None	0 None	0 None	
	2	5/2 Double	1 Air + Spring	P Push Non-Locking	SC2 3 Pin Connector Coil	CN2 Normal Connector	A2 AC 220V	
	3	5/3 Closed Center	2 Air	E External Pilot	L Lever Locking	SG2 Grommet/Flying Leads	CD2 Connector With LED	A1 AC 110V
	4	5/3 Open Center	3 Spring			SD2 Grommet/Flying Leads With LED	CZ2 Connector With LED & Surge Suppressor	A4 AC 24V D4 DC 24V D2 DC 12V
<b>SIP5 :</b> Pneumatic Valve	5	5/3 Pressure Center						



# Solenoid & Pilot Actuated Spool Valves

## 50mm Body Width

### 5Port 2Position Solenoid Valve

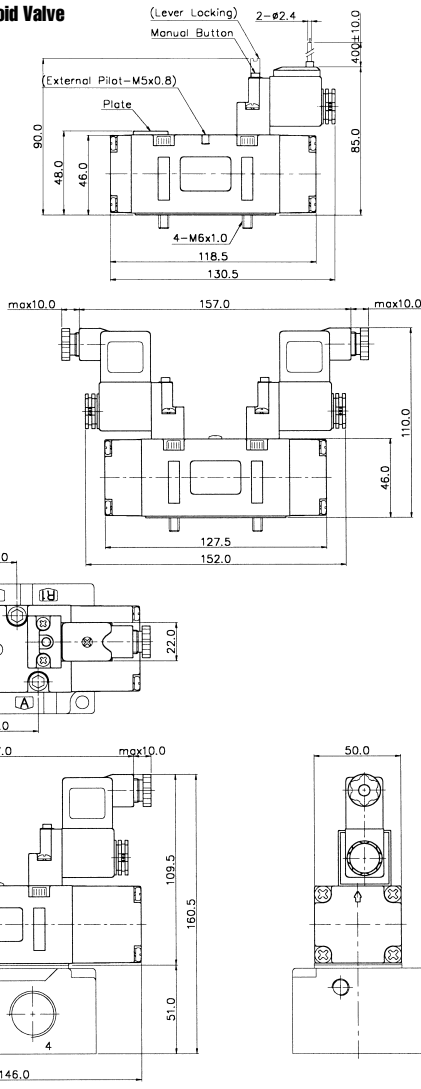
Single Solenoid  
SIV511-IP-SD2-\*\*\*



External Pilot  
SIV511-EP-SD2-\*\*\*

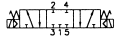


Double Solenoid  
SIV520-IP-SC2-CN2-\*\*\*



### 5Port 3Position Solenoid Valve

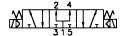
Closed Center  
SIV533-IP-SC2-CN2-\*\*\*



Exhaust Center  
SIV543-IP-SC2-CN2-\*\*\*



Pressure Center  
SIV553-IP-SC2-CN2-\*\*\*

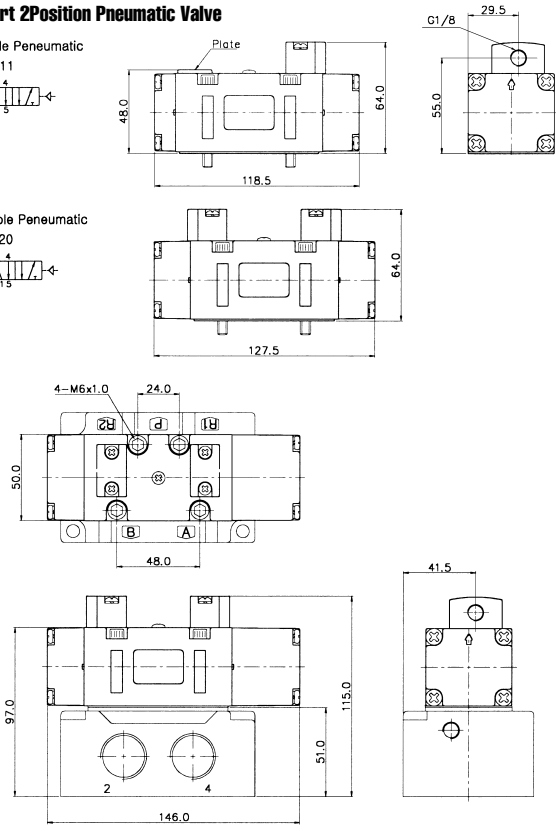


### 5Port 2Position Pneumatic Valve

Single Pneumatic  
SIP511

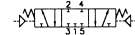


Double Pneumatic  
SIP520

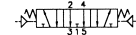


### 5Port 3Position Pneumatic Valve

Closed Center  
SIP533



Exhaust Center  
SIP543



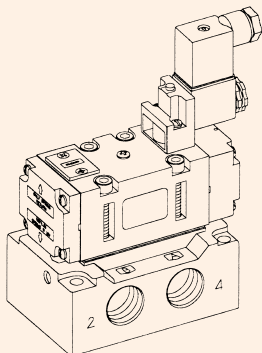
Pressure Center  
SIP553



## SIB50 SINGLE SUB BASE

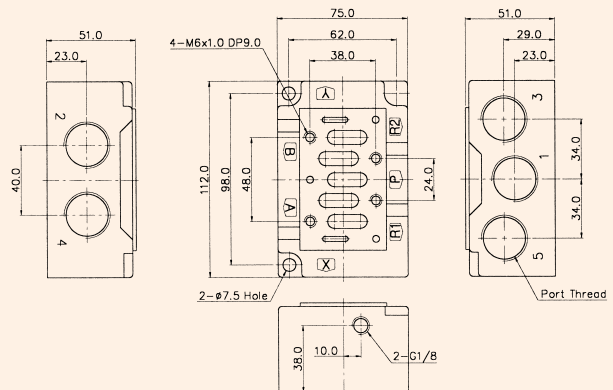
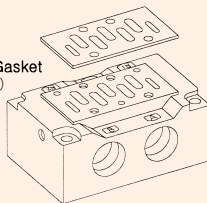
(SIV500 Solenoid & Pneumatic Valve Use Sub Base)

### Single Station Sub Base Dimension



Sub Base Gasket  
(Material:NBR)

Sub Base  
(Material:Al)



### Sub Base Ordering Code

SIB5			1 - S	
Sub Base Series	Port & Thread	Function		
SIB5	0 None	S	Single Station Sub Base, Without Pilot Ports	
SIV500 Solenoid Valve	2 G 3/8	SP	Single Station Sub Base, With Pilot Ports	
	3 G 1/2			
	4 G 3/4			
	7 NPT 3/8			
	8 NPT 1/2			
	9 NPT 3/4			