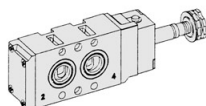


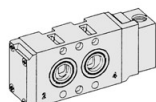
# SN3000. 1/4

NAMUR Interface  
Solenoid / Pneumatic Valves

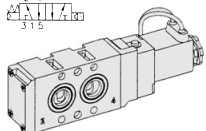
- 5/2, 5/3 -1/4
- 23mm Body Width
- Transition Flow 1000ℓ/min (5bar)



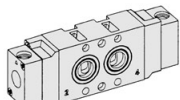
SN3101-IP  
2 4  
3 1 5



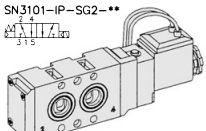
SNP3101  
2 4  
3 1 5



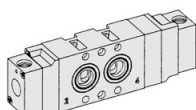
SN3101-IP-SG2-\*\*  
2 4  
3 1 5



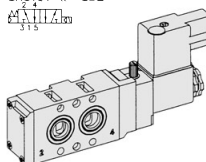
SNP3200  
2 4  
3 1 5



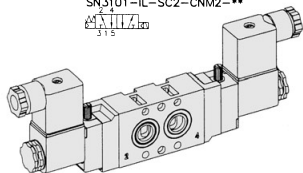
SN3101-IP-SD2-\*\*  
2 4  
3 1 5



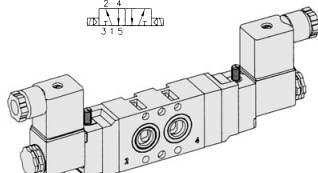
SNP3303  
2 4  
3 1 5



SN3101-IL-SC2-CN2-\*\*  
2 4  
3 1 5

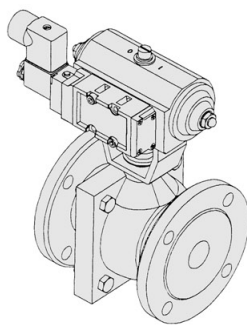
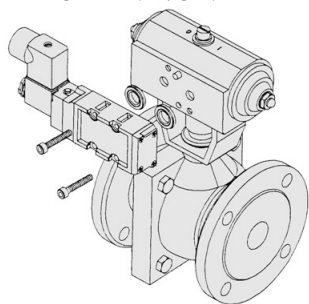


SN3200-IL-SC2-CN2-\*\*  
2 4  
3 1 5



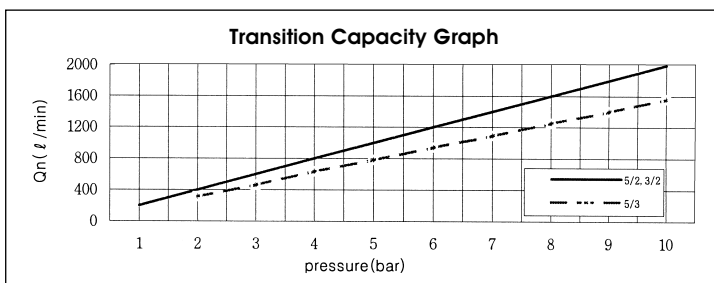
SN3303-IL-SC2-CN2-\*\*  
2 4  
3 1 5

\*\* : Voltage Selection (see page 62)



## SPECIFICATION

ITEM	SERIES	SOLENOID, PNEUMATIC	
		FUNCTION	
		5 Port 2 Position	5 Port 3 Position
Fluids		Compressed Air & Inert Gases	
Pressure(bar)		1.5~10.0	2.0~10.0
Eff. Sectional Area(mm <sup>2</sup> )-5bar		18.0	12.0
Ambient & Fluid Temp.		5~60°C (41~140°F)	
Response Time(5bar)		30ms or Less	40ms or Less
Max. Working Frequency		5c/sec	3c/sec
Lubrication		Not Required(Use ISO VG32 #)	
Manual Override		Push Button(Standard), Lever Lock(Option)	
Coil Insulation Class		F-Class or Equivalent	
Permissible Voltage Variation		±10% of Rated Voltage	
Off Min. Residual Voltage		AC:20% or Less / DC:10% or Less	
Power Consumption		Holding-AC:5.5VA(60Hz) / DC:2.5W	



- ### The Material of Parts
- Valve Body : Die-Cast Aluminium
  - Spool : Aluminium
  - Seals : NBR
  - Spring : Stainless
  - Cap : Zinc Pressure Die-Cast
  - Pilot Parts : Glass Filled Nylon
  - Armature : Stainless Steel
  - Armature Seals : Viton

### Option Parts

Metal Connector  
(Material:ZnDC)

CNM2

3Port Blanking Ring  
(Material:Al)

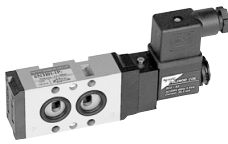
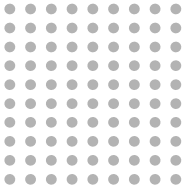
SN3000-BLK

\* The specification on each item can be amended without any prenotice to improve a performance.  
\* The specification on each item can be different from actual specification.

## ORDERING NO.

**SN3 1 0 1 - I P - SC2 - CN2 - A2**

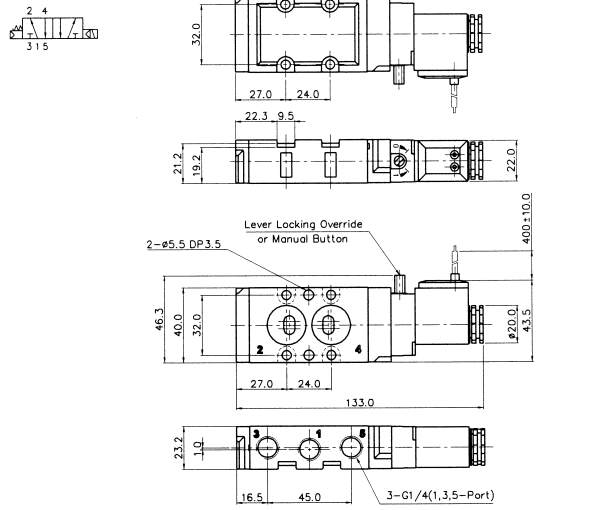
Valve Series	Function	Port Size & Thread	Return Method	Int/Ext. Pilot	Manual Operator	Solenoid Coil Type	Connector Type	Voltage
<b>SN3 :</b> Solenoid Valve	1 5/2 Single	0 G 1/4	0 None	I Internal Pilot	O None	O None	O None	O None
	2 5/2 Double	1 NPT 1/4	1 Air + Spring		P Push	SC2 3 Pin Connector Coil	CN2 Normal Connector	A2 AC 220V
	3 5/3 Closed Center		2 Air			SG2 Grommet/Flying Leads	CD2 Connector With LED	A1 AC 110V
	4 5/3 Open Center		3 Spring		L Lever Locking	SD2 Grommet/Flying Leads With LED	C22 Connector With LED & Surge Suppressor	A4 AC 24V D4 DC 24V D2 DC 12V
<b>SNP3 :</b> Pneumatic Valve	5 5/3 Pressure Center						CNM2 Metal Connector	
							CDM2 Metal Connector With LED	
							C2M2 Metal Connector With LED & Surge Suppressor	



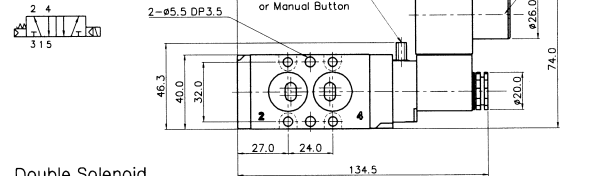
# Solenoid & Pilot Actuated Spool Valves

## 5Port 2Position Solenoid Valve

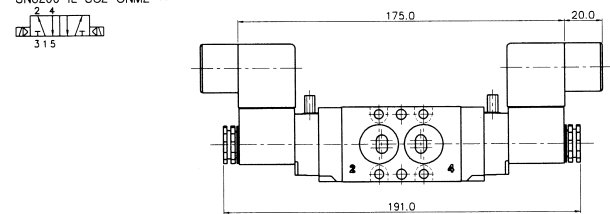
Single Solenoid  
 SN3101-IL-SD2-\*\*\*



SN3101-IL-SC2-CNM2-\*\*\*

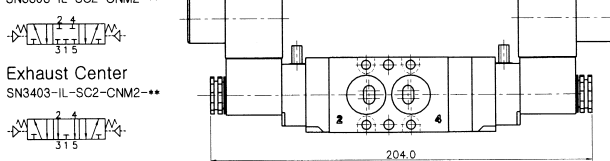


Double Solenoid  
 SN3200-IL-SC2-CNM2-\*\*\*

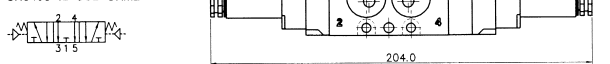


## 5Port 3Position Solenoid Valve

Closed Center  
 SN3303-IL-SC2-CNM2-\*\*\*



Exhaust Center  
 SN3403-IL-SC2-CNM2-\*\*\*

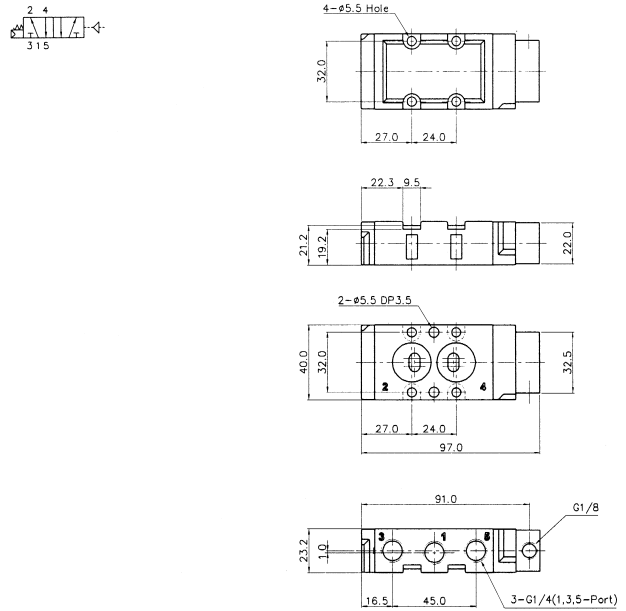


Pressure Center  
 SN3503-IL-SC2-CNM2-\*\*\*

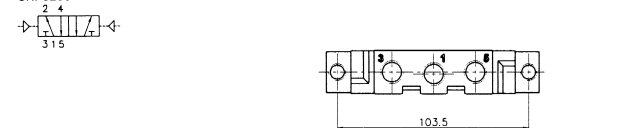


## 5Port 2Position Pneumatic Valve

Single Pneumatic  
 SNP3101



Double Pneumatic  
 SNP3200

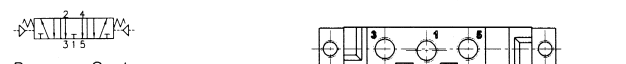


## 5Port 3Position Pneumatic Valve

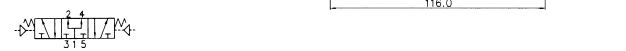
Closed Center  
 SNP3303



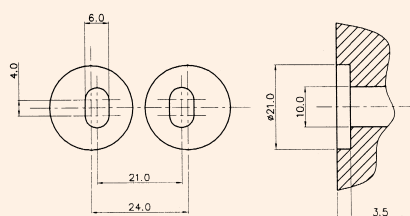
Exhaust Center  
 SNP3403



Pressure Center  
 SNP3503

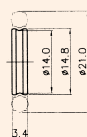


## Sealing Part Dimension



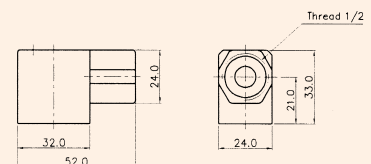
Sealing Area

## 3-Port Blanking Ring Option (Material : Al)



SN3000-BLK

## Metal Connector (Material : Zn-Dc)



CNM2

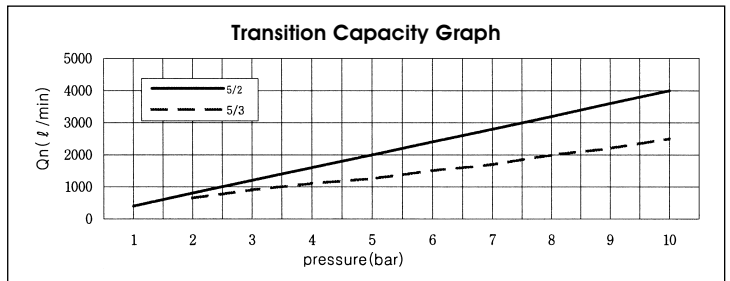
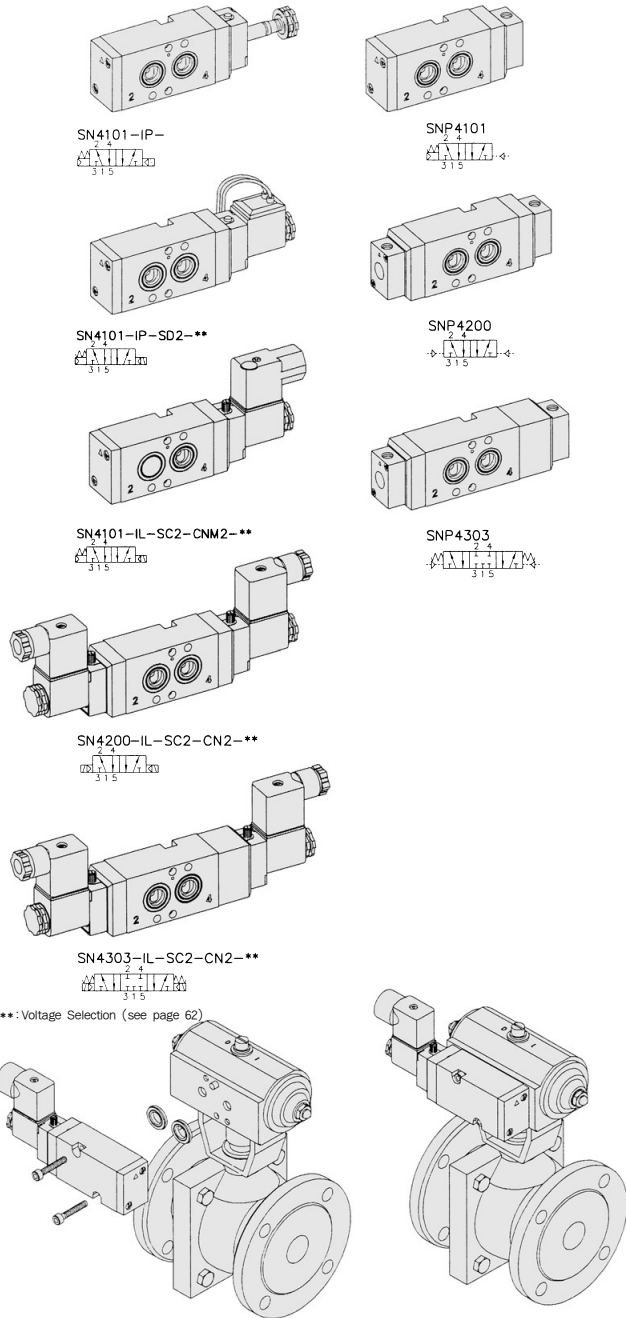
# SN4000. 1/4

NAMUR Interface  
Solenoid / Pneumatic Valves

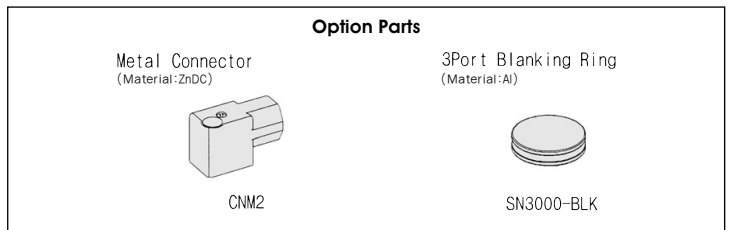
- 5/2, 5/3-1/4
- 30mm Body Width
- Transition Flow 1800ℓ/min (5bar)

## SPECIFICATION

ITEM	SERIES	SOLENOID, PNEUMATIC	
		5 Port 2 Position	5 Port 3 Position
Fluids		Compressed Air & Inert Gases	
Pressure(bar)		1.5~10.0	2.0~10.0
Eff. Sectional Area(mm <sup>2</sup> )-5bar		32.0	16.0
Ambient & Fluid Temp.		5~60°C (41~140°F)	
Response Time(5bar)		30ms or Less	40ms or Less
Max. Working Frequency		5c/sec	3c/sec
Lubrication		Not Required(Use ISO VG32 #)	
Manual Override		Push Button(Standard), Lever Lock(Option)	
Coil Insulation Class		F-Class or Equivalent	
Permissible Voltage Variation		±10% of Rated Voltage	
Off Min. Residual Voltage		AC:20% or Less / DC:10% or Less	
Power Consumption		Holding-AC:5.5VA(60Hz) / DC:2.5W	



- ### The Material of Parts
- Valve Body : Die-Cast Aluminium
  - Spool : Aluminium
  - Seals : NBR
  - Spring : Stainless
  - Cap : Zinc Pressure Die-Cast
  - Pilot Parts : Glass Filled Nylon
  - Armature : Stainless Steel
  - Armature Seals : Viton



\* The specification on each item can be amended without any prenotice to improve a performance.  
\* The specification on each item can be different from actual specification.

## ORDERING NO.

**SN4 1 0 1 - I P - SC2 - CM2 - A2**

Valve Series	Function	Port Size & Thread	Return Method	Int/Ext. Pilot	Manual Operator	Solenoid Coil Type	Connector Type	Voltage
<b>SN4:</b> Solenoid Valve	1 5/2 Single	0 G 1/4	0 None	1 Internal Pilot	0 None	0 None	0 None	0 None
	2 5/2 Double	1 NPT 1/4	1 Air + Spring		P Push	SC2 3 Pin Connector Coil	CN2 Normal Connector	A2 AC 220V
	3 5/3 Closed Center		2 Air			SG2 Grommet/Flying Leads	CD2 Connector With LED	A1 AC 110V
	4 5/3 Open Center		3 Spring		L Lever Locking	SD2 Grommet/Flying Leads With LED	CZ2 Connector With LED & Surge Suppressor	A4 AC 24V
<b>SNP4:</b> Pneumatic Valve	5 5/3 Pressure Center						CNM2 Metal Connector	D4 DC 24V
							CDM2 Metal Connector With LED	D2 DC 12V
							CZM2 Metal Connector With LED & Surge Suppressor	