

Application & Feature

- One-touch joints used in the chemical industry.
- Used for a wide variety of models to meet all needs.
- Excellent in chemical resistance and a product made of suitable material for use in chemical and pharmaceutical industries.
- Easy to connect/disconnect tube by one touch.
- Flexible for directional tube laying given its revolving construction of body.
- Elliptical sleeve makes it possible to apply and remove the tube easily in confined space.
- The parts are washed, assembled and packed in a clean room.

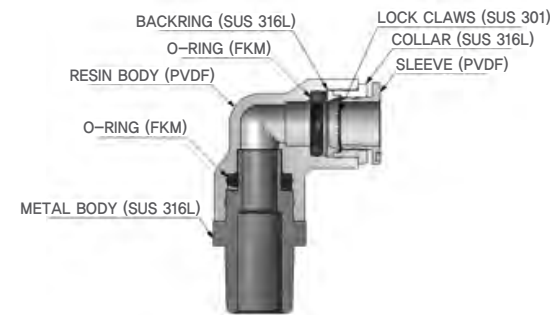
Specification

Fluid	Water, Air, Oil	
Working Pressure Range	0~290psi	0~20kgf/cm ² (0~2MPa)
Temperature Range	-4°F~248°F	-20~120°C
Applicable Tube Material	Polyurethane and Nylon	

Maximum Usable Pressure

SIZE	ø4	ø6	ø8	ø10	ø12
20°C	0~20kgf/cm ²			0~12kgf/cm ²	
100°C	0~10kgf/cm ²		0~8kgf/cm ²	0~6kgf/cm ²	
120°C	0~3kgf/cm ²				

Structural Diagram



Produce Code System

PL	08	02
①	②	③

① TYPE

② Tube Dia (øD)

Code	04	06	08	10	12
Dia	ø4	ø6	ø8	ø10	ø12

③ Thread Size *Metric Thread & R(PT) Thread

	Metric size		Taper Pipe Thread		
Code	M5	01	02	03	04
Size	M5x0.8	R1/8	R1/4	R3/8	R1/2

	Parallel Thread			
Code	G01	G02	G03	G04
Size	G1/8	G1/4	G3/8	G1/2

Chemical Resistant Fittings

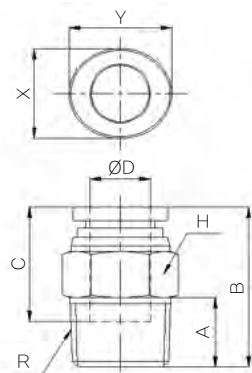
CR-PC(R) (Male Straight)	CR-PC(G) (Male Straight)	CR-PL (Male Elbow)	CR-PL(G) (Male Elbow)	CR-PT (Male Branch Tee)	CR-PT(G) (Male Branch Tee)
CR-PST (Male Run Tee)	CR-PST(G) (Male Run Tee)	CR-PUC (Union Straight)	CR-PUL (Union Elbow)	CR-PUT (Union Tee)	CR-PY (Union Y)
CR-PG (Reducer)	CR-PUG (Different Dia of Union Tee)	CR-PW (Reducer Y)	CR-PWT (Male Y)	CR-PWT(G) (Male Y)	CR-PCF(R) (Female Straight)
CR-PCF(G) (Female Straight)	CR-PLF (Female Elbow)	CR-PLF(G) (Female Elbow)	CR-PTF (Female Branch Tee)	CR-PTF(G) (Female Branch Tee)	CR-PSTF (Female Run Tee)
CR-PSTF(G) (Female Run Tee)	CR-PWF (Female Y)	CR-PWF(G) (Female Y)	CR-PLJ (Plug-in Elbow)	CR-PTJ (Plug-in Tee)	CR-PPM (Bulkhead Union P)
CR-PP (Plug)					

CAUTION

1. Avoid randomly product change.
2. Never over pushing to assemble product, it may cause damage.
3. Please check leakage before built.

CR-PC(R)

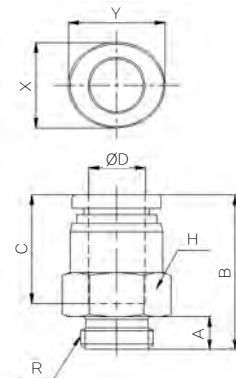
(Male Straight)



CODE	MODEL	ØD	A	B	C	H	R	X	Y	W.G(g)	Q'ty/ inbox
95010402	CR-PC 04M5	4.0	4.0	20.0	14.5	10.0	M5	8.6	10.8	7.7	50
95010411	CR-PC 0401	4.0	8.0	22.1	14.5	10.0	PT1/8	8.6	10.8	10.6	50
95010602	CR-PC 06M5	6.0	4.0	21.6	15.6	13.0	M5	11.0	13.0	13.3	50
95010611	CR-PC 0601	6.0	8.0	22.2	15.6	13.0	PT1/8	11.0	13.0	14.1	50
95010612	CR-PC 0602	6.0	11.0	25.2	15.6	14.0	PT1/4	11.0	13.0	22.3	50
95010811	CR-PC 0801	8.0	8.0	26.2	17.3	14.0	PT1/8	13.0	15.0	14.9	50
95010812	CR-PC 0802	8.0	11.0	25.7	17.3	14.0	PT1/4	13.0	15.0	18.9	50
95011012	CR-PC 1002	10.0	11.0	32.3	19.4	17.0	PT1/4	16.0	18.5	28.7	40
95011013	CR-PC 1003	10.0	12.0	27.3	19.4	17.0	PT3/8	16.0	18.5	28.8	25
95011213	CR-PC 1203	12.0	12.0	31.3	22.4	20.0	PT3/8	19.5	22.5	36.6	25
95011214	CR-PC 1204	12.0	15.0	32.3	22.4	21.0	PT1/2	19.5	22.5	52.0	25

CR-PC(G)

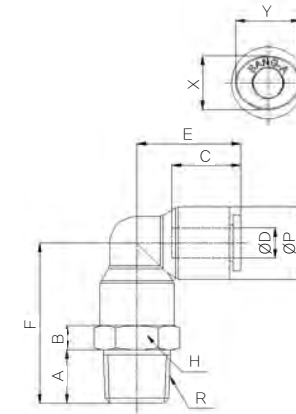
(Male Straight)



CODE	MODEL	ØD	A	B	C	H	R	X	Y	W.G(g)	Q'ty/ inbox
95010431	CR-PC 04G01	4.0	5.3	19.4	14.5	14.0	PF1/8	8.6	10.8	12.3	50
95010631	CR-PC 06G01	6.0	5.3	23.0	15.6	14.0	PF1/8	11.0	13.0	15.3	50
95010632	CR-PC 06G02	6.0	6.0	20.2	15.6	17.0	PF1/4	11.0	13.0	21.4	50
95010831	CR-PC 08G01	8.0	5.3	25.0	17.3	14.0	PF1/8	13.0	15.0	15.6	50
95010832	CR-PC 08G02	8.0	6.0	21.2	17.3	17.0	PF1/4	13.0	15.0	19.1	50
95011032	CR-PC 10G02	10.0	6.0	27.8	19.4	17.0	PF1/4	16.0	18.5	24.6	40
95011033	CR-PC 10G03	10.0	7.0	24.3	19.4	21.0	PF3/8	16.0	18.5	31.6	25
95011233	CR-PC 12G03	12.0	7.0	31.8	22.4	21.0	PF3/8	19.5	22.5	40.8	25
95011234	CR-PC 12G04	12.0	8.5	28.8	22.4	24.0	PF1/2	19.5	22.5	49.2	25

CR-PL

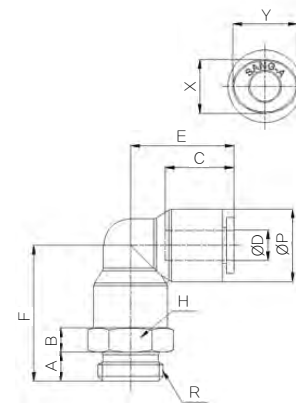
(Male Elbow)



CODE	MODEL	ØD	ØP	A	B	C	E	F	R	H	X	Y	W.G(g)	Q'ty/ inbox
95020402	CR-PL 04M5	4.0	11.8	4.0	8.0	14.5	18.0	26.4	M5	13.0	8.6	10.8	19.1	50
95020411	CR-PL 0401	4.0	11.8	8.0	8.0	14.5	18.0	30.4	PT 1/8	13.0	8.6	10.8	21.8	50
95020412	CR-PL 0402	4.0	11.8	11.0	8.0	14.5	18.0	33.4	PT 1/4	14.0	8.6	10.8	30.1	50
95020602	CR-PL 06M5	6.0	14.7	4.0	8.0	15.6	20.6	28.7	M5	15.0	11.0	13.0	29.0	50
95020611	CR-PL 0601	6.0	14.7	8.0	8.0	15.6	20.6	32.7	PT 1/8	15.0	11.0	13.0	30.4	40
95020612	CR-PL 0602	6.0	14.7	11.0	8.0	15.6	20.6	35.7	PT 1/4	15.0	11.0	13.0	37.2	40
95020811	CR-PL 0801	8.0	16.7	8.0	8.0	17.3	23.1	35.0	PT 1/8	17.0	13.0	15.0	34.2	40
95020812	CR-PL 0802	8.0	16.7	11.0	8.0	17.3	23.1	38.0	PT 1/4	17.0	13.0	15.0	40.4	40
95020813	CR-PL 0803	8.0	16.7	12.0	8.0	17.3	23.1	39.0	PT 3/8	17.0	13.0	15.0	49.1	25
95021012	CR-PL 1002	10.0	19.3	11.0	8.0	19.4	25.8	39.8	PT 1/4	20.0	16.0	18.5	51.8	25
95021013	CR-PL 1003	10.0	19.3	12.0	8.0	19.4	25.8	40.8	PT 3/8	20.0	16.0	18.5	60.2	20
95021014	CR-PL 1004	10.0	19.3	15.0	8.0	19.4	25.8	43.8	PT 1/2	21.0	16.0	18.5	80.7	20
95021212	CR-PL 1202	12.0	23.2	11.0	8.0	22.4	30.9	44.0	PT 1/4	24.0	19.5	22.5	80.5	20
95021213	CR-PL 1203	12.0	23.2	12.0	8.0	22.4	30.9	45.0	PT 3/8	24.0	19.5	22.5	80.8	20
95021214	CR-PL 1204	12.0	23.2	15.0	8.0	22.4	30.9	48.0	PT 1/2	24.0	19.5	22.5	98.3	20

CR-PL(G)

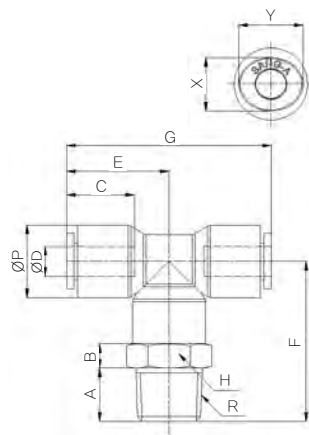
(Male Elbow)



CODE	MODEL	ØD	ØP	A	B	C	E	F	R	H	X	Y	W.G(g)	Q'ty/ inbox
95020431	CR-PL 04G01	4.0	11.8	5.3	8.0	14.5	18.0	27.7	PF 1/8	13.0	8.6	10.8	19.7	50
95020432	CR-PL 04G02	4.0	11.8	6.0	8.0	14.5	18.0	28.4	PF 1/4	17.0	8.6	10.8	29.0	50
95020631	CR-PL 06G01	6.0	14.7	5.3	8.0	15.6	20.6	30.0	PF 1/8	15.0	11.0	13.0	28.4	40
95020632	CR-PL 06G02	6.0	14.7	6.0	8.0	15.6	20.6	30.7	PF 1/4	17.0	11.0	13.0	34.7	40
95020831	CR-PL 08G01	8.0	16.7	5.3	8.0	17.3	23.1	32.3	PF 1/8	17.0	13.0	15.0	32.6	40
95020832	CR-PL 08G02	8.0	16.7	6.0	8.0	17.3	23.1	33.0	PF 1/4	17.0	13.0	15.0	35.2	40
95020833	CR-PL 08G03	8.0	16.7	7.0	8.0	17.3	23.1	34.0	PF 3/8	20.0	13.0	15.0	46.0	25
95021032	CR-PL 10G02	10.0	19.3	6.0	8.0	19.4	25.8	34.8	PF 1/4	20.0	16.0	18.5	47.3	25
95021033	CR-PL 10G03	10.0	19.3	7.0	8.0	19.4	25.8	35.8	PF 3/8	20.0	16.0	18.5	51.8	25
95021034	CR-PL 10G04	10.0	19.3	8.5	8.0	19.4	25.8	37.3	PF 1/2	24.0	16.0	18.5	71.0	20
95021232	CR-PL 12G02	12.0	23.2	6.0	8.0	22.4	30.9	39.0	PF 1/4	24.0	19.5	22.5	76.0	20
95021233	CR-PL 12G03	12.0	23.2	7.0	8.0	22.4	30.9	40.0	PF 3/8	24.0	19.5	22.5	73.5	20
95021234	CR-PL 12G04	12.0	23.2	8.5	8.0	22.4	30.9	41.5	PF 1/2	24.0	19.5	22.5	82.7	20

CR-PT

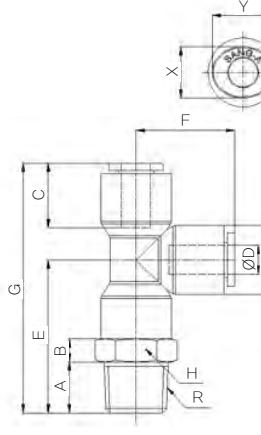
(Male Branch Tee)



CODE	MODEL	ØD	ØP	A	B	C	E	F	G	R	H	X	Y	W.G(g)	Q'ty/ inbox
95030402	CR-PT 04M5	4.0	11.8	4.0	8.0	14.5	18.0	26.4	36.0	M5	13.0	8.6	10.8	23.1	50
95030411	CR-PT 0401	4.0	11.8	8.0	8.0	14.5	18.0	30.4	36.0	PT 1/8	13.0	8.6	10.8	25.8	50
95030412	CR-PT 0402	4.0	11.8	11.0	8.0	14.5	18.0	33.4	36.0	PT 1/4	14.0	8.6	10.8	34.1	50
95030602	CR-PT 06M5	6.0	14.7	4.0	8.0	15.6	20.6	28.7	41.2	M5	15.0	11.0	13.0	36.8	40
95030611	CR-PT 0601	6.0	14.7	8.0	8.0	15.6	20.6	32.7	41.2	PT 1/8	15.0	11.0	13.0	38.3	40
95030612	CR-PT 0602	6.0	14.7	11.0	8.0	15.6	20.6	35.7	41.2	PT 1/4	15.0	11.0	13.0	45.0	40
95030811	CR-PT 0801	8.0	16.7	8.0	8.0	17.3	23.1	35.0	46.2	PT 1/8	17.0	13.0	15.0	43.1	40
95030812	CR-PT 0802	8.0	16.7	11.0	8.0	17.3	23.1	38.0	46.2	PT 1/4	17.0	13.0	15.0	49.3	25
95030813	CR-PT 0803	8.0	16.7	12.0	8.0	17.3	23.1	39.0	46.2	PT 3/8	17.0	13.0	15.0	57.9	25
95031012	CR-PT 1002	10.0	19.3	11.0	8.0	19.4	25.8	39.8	51.6	PT 1/4	20.0	16.0	18.5	63.1	20
95031013	CR-PT 1003	10.0	19.3	12.0	8.0	19.4	25.8	40.8	51.6	PT 3/8	20.0	16.0	18.5	71.6	20
95031014	CR-PT 1004	10.0	19.3	15.0	8.0	19.4	25.8	43.8	51.6	PT 1/2	21.0	16.0	18.5	92.0	20
95031212	CR-PT 1202	12.0	23.2	11.0	8.0	22.4	30.9	44.0	61.8	PT 1/4	24.0	19.5	22.5	98.2	15
95031213	CR-PT 1203	12.0	23.2	12.0	8.0	22.4	30.9	45.0	61.8	PT 3/8	24.0	19.5	22.5	98.4	15
95031214	CR-PT 1204	12.0	23.2	15.0	8.0	22.4	30.9	48.0	61.8	PT 1/2	24.0	19.5	22.5	115.9	15

CR-PST

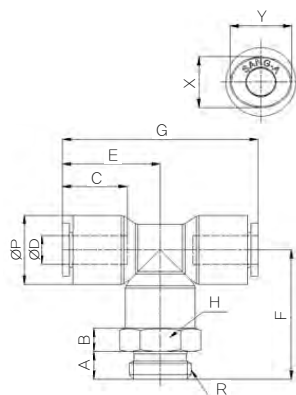
(Male Run Tee)



CODE	MODEL	ØD	ØP	A	B	C	E	F	G	R	H	X	Y	W.G(g)	Q'ty/ inbox
95070402	CR-PST 04M5	4.0	11.8	4.0	8.0	14.5	26.4	18.0	44.4	M5	13.0	8.6	10.8	23.1	50
95070411	CR-PST 0401	4.0	11.8	8.0	8.0	14.5	30.4	18.0	48.4	PT 1/8	13.0	8.6	10.8	25.8	50
95070412	CR-PST 0402	4.0	11.8	11.0	8.0	14.5	33.4	18.0	51.4	PT 1/4	14.0	8.6	10.8	34.1	40
95070602	CR-PST 06M5	6.0	14.7	4.0	8.0	15.6	28.7	20.6	49.3	M5	15.0	11.0	13.0	36.8	40
95070611	CR-PST 0601	6.0	14.7	8.0	8.0	15.6	32.7	20.6	53.3	PT 1/8	15.0	11.0	13.0	38.3	40
95070612	CR-PST 0602	6.0	14.7	11.0	8.0	15.6	35.7	20.6	56.3	PT 1/4	15.0	11.0	13.0	45.0	40
95070811	CR-PST 0801	8.0	16.7	8.0	8.0	17.3	35.0	23.1	58.1	PT 1/8	17.0	13.0	15.0	43.1	30
95070812	CR-PST 0802	8.0	16.7	11.0	8.0	17.3	38.0	23.1	61.1	PT 1/4	17.0	13.0	15.0	49.3	25
95070813	CR-PST 0803	8.0	16.7	12.0	8.0	17.3	39.0	23.1	62.1	PT 3/8	17.0	13.0	15.0	57.9	25
95071012	CR-PST 1002	10.0	19.3	11.0	8.0	19.4	39.8	25.8	65.6	PT 1/4	20.0	16.0	18.5	63.1	20
95071013	CR-PST 1003	10.0	19.3	12.0	8.0	19.4	40.8	25.8	66.6	PT 3/8	20.0	16.0	18.5	71.6	20
95071014	CR-PST 1004	10.0	19.3	15.0	8.0	19.4	43.8	25.8	69.6	PT 1/2	21.0	16.0	18.5	92.0	20
95071212	CR-PST 1202	12.0	23.2	11.0	8.0	22.4	44.0	30.9	74.9	PT 1/4	24.0	19.5	22.5	98.2	15
95071213	CR-PST 1203	12.0	23.2	12.0	8.0	22.4	45.0	30.9	75.9	PT 3/8	24.0	19.5	22.5	98.4	15
95071214	CR-PST 1204	12.0	23.2	15.0	8.0	22.4	48.0	30.9	78.9	PT 1/2	24.0	19.5	22.5	115.9	15

CR-PT(G)

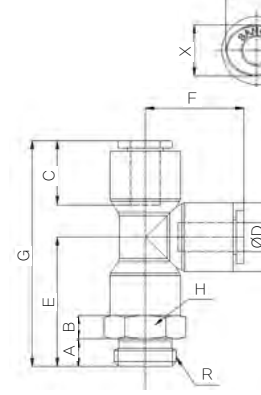
(Male Branch Tee)



CODE	MODEL	ØD	ØP	A	B	C	E	F	G	R	H	X	Y	W.G(g)	Q'ty/ inbox
95030431	CR-PT 04G01	4.0	11.8	5.3	8.0	14.5	18.0	27.7	36.0	PF 1/8	13.0	8.6	10.8	23.6	50
95030432	CR-PT 04G02	4.0	11.8	6.0	8.0	14.5	18.0	28.4	36.0	PF 1/4	17.0	8.6	10.8	33.0	50
95030631	CR-PT 06G01	6.0	14.7	5.3	8.0	15.6	20.6	30.0	41.2	PF 1/8	15.0	11.0	13.0	36.3	40
95030632	CR-PT 06G02	6.0	14.7	6.0	8.0	15.6	20.6	30.7	41.2	PF 1/4	17.0	11.0	13.0	42.5	40
95030831	CR-PT 08G01	8.0	16.7	5.3	8.0	17.3	23.1	32.3	46.2	PF 1/8	17.0	13.0	15.0	41.5	40
95030832	CR-PT 08G02	8.0	16.7	6.0	8.0	17.3	23.1	33.0	46.2	PF 1/4	17.0	13.0	15.0	44.1	25
95030833	CR-PT 08G03	8.0	16.7	7.0	8.0	17.3	23.1	34.0	46.2	PF 3/8	20.0	13.0	15.0	54.9	25
95031032	CR-PT 10G02	10.0	19.3	6.0	8.0	19.4	25.8	34.8	51.6	PF 1/4	20.0	16.0	18.5	58.6	20
95031033	CR-PT 10G03	10.0	19.3	7.0	8.0	19.4	25.8	35.8	51.6	PF 3/8	20.0	16.0	18.5	63.2	20
95031034	CR-PT 10G04	10.0	19.3	8.5	8.0	19.4	25.8	37.3	51.6	PF 1/2	24.0	16.0	18.5	82.4	20
95031232	CR-PT 12G02	12.0	23.2	6.0	8.0	22.4	30.9	39.0	61.8	PF 1/4	24.0	19.5	22.5	93.7	15
95031233	CR-PT 12G03	12.0	23.2	7.0	8.0	22.4	30.9	40.0	61.8	PF 3/8	24.0	19.5	22.5	91.2	15
95031234	CR-PT 12G04	12.0	23.2	8.5	8.0	22.4	30.9	41.5	61.8	PF 1/2	24.0	19.5	22.5	100.4	15

CR-PST(G)

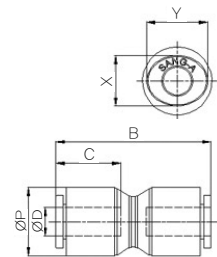
(Male Run Tee)



CODE	MODEL	ØD	ØP	A	B	C	E	F	G	R	H	X	Y	W.G(g)	Q'ty/ inbox
95070431	CR-PST 04G01	4.0	11.8	5.3	8.0	14.5	27.7	18.0	45.7	PF 1/8	13.0	8.6	10.8	23.6	50
95070432	CR-PST 04G02	4.0	11.8	6.0	8.0	14.5	28.4	18.0	46.4	PF 1/4	17.0	8.6	10.8	33.0	40
95070631	CR-PST 06G01	6.0	14.7	5.3	8.0	15.6	30.0	20.6	50.6	PF 1/8	15.0	11.0	13.0	36.3	40
95070632	CR-PST 06G02	6.0	14.7	6.0	8.0	15.6	30.7	20.6	51.3	PF 1/4	17.0	11.0	13.0	42.5	40
95070831	CR-PST 08G01	8.0	16.7	5.3	8.0	17.3	32.3	23.1	55.4	PF 1/8	17.0	13.0	15.0	41.5	30
95070832	CR-PST 08G02	8.0	16.7	6.0	8.0	17.3	33.0	23.1	56.1	PF 1/4	17.0	13.0	15.0	44.1	25
95070833	CR-PST 08G03	8.0	16.7	7.0	8.0	17.3	34.0	23.1	57.1	PF 3/8	20.0	13.0	15.0	54.9	25
95071032	CR-PST 10G02	10.0	19.3	6.0	8.0	19.4	34.8	25.8	60.6	PF 1/4	20.0	16.0	18.5	58.6	20
95071033	CR-PST 10G03	10.0	19.3	7.0	8.0	19.4	35.8	25.8	61.6	PF 3/8	20.0	16.0	18.5	63.2	20
95071034	CR-PST 10G04	10.0	19.3	8.5	8.0	19.4	37.3	25.8	63.1	PF 1/2	24.0	16.0	18.5	82.4	20
95071232	CR-PST 12G02	12.0	23.2	6.0	8.0	22.4	39.0	30.9	69.9	PF 1/4	24.0	19.5	22.5	93.7	15
95071233	CR-PST 12G03	12.0	23.2	7.0	8.0	22.4	40.0	30.9	70.9	PF 3/8	24.0	19.5	22.5	91.2	15
95071234	CR-PST 12G04	12.0	23.2	8.5	8.0	22.4	41.5	30.9	72.4	PF 1/2	24.0	19.5	22.5	100.4	15

CR-PUC

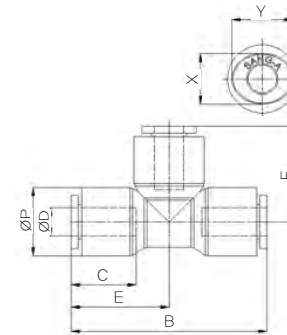
(Union Straight)



CODE	MODEL	ØD	ØP	B	C	X	Y	W.G(g)	Q'ty/ inbox	(mm)
95040400	CR-PUC 04	4.0	11.8	30.0	14.5	8.6	10.8	9.2	50	
95040600	CR-PUC 06	6.0	14.7	32.8	15.6	11.0	13.0	15.8	40	
95040800	CR-PUC 08	8.0	16.7	36.2	17.3	13.0	15.0	17.9	40	
95041000	CR-PUC 10	10.0	19.3	41.0	19.4	16.0	18.5	24.2	25	
95041200	CR-PUC 12	12.0	23.2	48.3	22.4	19.5	22.5	38.6	20	

CR-PUT

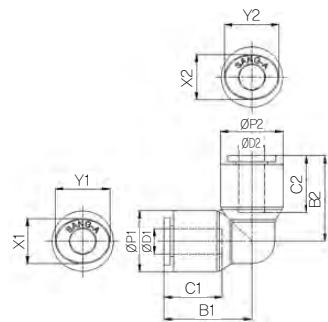
(Union Tee)



CODE	MODEL	ØD	ØP	B	C	E	F	X	Y	W.G(g)	Q'ty/ inbox	(mm)
95060400	CR-PUT 04	4.0	11.8	36.0	14.5	18.0	18.3	8.6	10.8	14.1	50	
95060600	CR-PUT 06	6.0	14.7	41.2	15.6	20.6	20.6	11.0	13.0	24.7	40	
95060800	CR-PUT 08	8.0	16.7	46.2	17.3	23.1	23.1	13.0	15.0	28.0	30	
95061000	CR-PUT 10	10.0	19.3	51.6	19.4	25.8	25.8	16.0	18.5	37.6	20	
95061200	CR-PUT 12	12.0	23.2	61.8	22.4	30.9	30.9	19.5	22.5	59.4	15	

CR-PUL

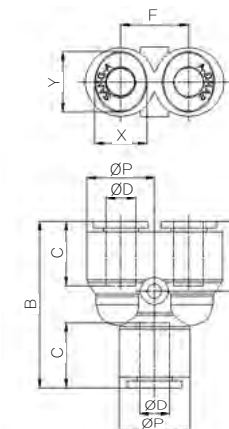
(Union Elbow)



CODE	MODEL	ØD1	ØD2	ØP1	ØP2	B1	B2	C1	C2	X1	X2	Y1	Y2	W.G(g)	Q'ty/ inbox	(mm)
95050400	CR-PUL 04	4.0	4.0	11.8	11.8	18.0	18.0	14.5	14.5	8.6	8.6	10.8	10.8	10.1	50	
95050600	CR-PUL 06	6.0	6.0	14.7	14.7	20.6	20.6	15.6	15.6	11.0	11.0	13.0	13.0	16.9	40	
95050800	CR-PUL 08	8.0	8.0	16.7	16.7	23.1	23.1	17.3	17.3	13.0	13.0	15.0	15.0	19.1	40	
95051000	CR-PUL 10	10.0	10.0	19.3	19.3	25.8	25.8	19.4	19.4	16.0	16.0	18.5	18.5	26.3	25	
95051200	CR-PUL 12	12.0	12.0	23.2	23.2	30.9	30.9	22.4	22.4	19.5	19.5	22.5	22.5	41.8	20	
95054300	CR-PUL 0604	6.0	4.0	14.7	11.8	20.6	18.0	15.6	14.5	11.0	8.6	13.0	10.8	13.6	40	
95054500	CR-PUL 0806	8.0	6.0	16.7	14.7	23.1	20.6	17.3	15.6	13.0	11.0	15.0	13.0	18.1	40	
95054700	CR-PUL 1008	10.0	8.0	19.3	16.7	25.8	23.1	19.4	17.3	16.0	13.0	18.5	15.0	23.4	25	
95055000	CR-PUL 1210	12.0	10.0	23.2	19.3	30.9	25.8	22.4	19.4	19.5	16.0	22.5	18.5	35.4	20	

CR-PY

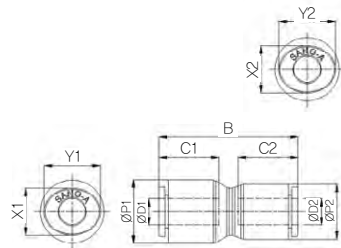
(Union Y)



CODE	MODEL	ØD	ØP	B	C	E	F	X	Y	W.G(g)	Q'ty/ inbox	(mm)
95080400	CR-PY 04	4.0	11.8	31.0	14.5	13.1	11.0	8.6	10.8	14.4	50	
95080600	CR-PY 06	6.0	14.7	35.4	15.6	14.9	13.6	11.0	13.0	25.3	40	
95080800	CR-PY 08	8.0	16.7	42.7	17.3	18.1	15.4	13.0	15.0	30.4	25	
95081000	CR-PY 10	10.0	19.3	45.5	19.4	17.5	17.5	16.0	18.5	39.8	20	
95081200	CR-PY 12	12.0	23.2	53.6	22.4	20.9	21.5	19.5	22.5	62.1	15	

CR-PG

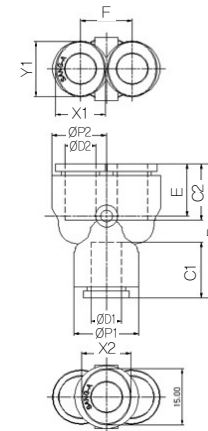
(Reducer)



CODE	MODEL	ØD1	ØD2	ØP1	ØP2	B	C1	C2	X1	X2	Y1	Y2	W.G(g)	Q'ty/ inbox
95314300	CR-PG 0604	6.0	4.0	14.7	11.8	31.2	15.6	14.5	11.0	8.6	13.0	10.8	12.6	40
95314500	CR-PG 0806	8.0	6.0	16.7	14.7	33.9	17.3	15.6	13.0	11.0	15.0	13.0	17.1	40
95314700	CR-PG 1008	10.0	8.0	19.3	16.7	38.9	19.4	17.3	16.0	13.0	18.5	15.0	21.4	25
95315000	CR-PG 1210	12.0	10.0	23.2	19.3	44.7	22.4	19.4	19.5	16.0	22.5	18.5	32.0	20

CR-PW

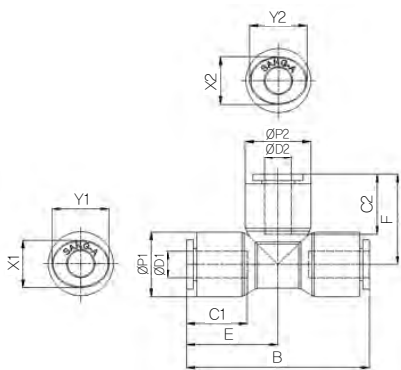
(Reducer Y)



CODE	MODEL	ØD1	ØD2	ØP1	ØP2	B	C1	C2	E	F	X1	X2	Y1	Y2	W.G(g)	Q'ty/ inbox
95114300	CR-PW 0604	6.0	4.0	14.7	11.8	33.5	15.6	14.5	13.2	11.0	11.0	8.6	13.0	10.8	21.6	40
95114500	CR-PW 0806	8.0	6.0	16.7	14.7	38.0	17.3	15.6	14.9	13.6	13.0	11.0	15.0	13.0	26.2	25
95114700	CR-PW 1008	10.0	8.0	19.3	16.7	43.1	19.4	17.3	17.3	15.4	16.0	13.0	18.5	15.0	33.0	20
95115000	CR-PW 1210	12.0	10.0	23.2	19.3	48.9	22.4	19.4	18.0	17.5	19.5	16.0	22.5	18.5	46.9	15

CR-PUG

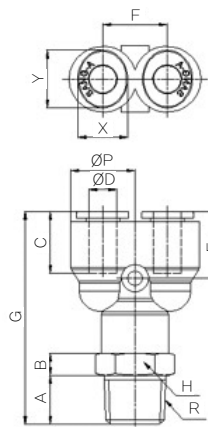
(Different Dia of Union Tee)



CODE	MODEL	ØD1	ØD2	ØP1	ØP2	B	C1	C2	E	F	X1	X2	Y1	Y2	W.G(g)	Q'ty/ inbox
95684300	CR-PUG 0604	6.0	4.0	14.7	11.8	41.2	15.6	14.5	20.6	19.6	11.0	8.6	13.0	10.8	21.8	40
95684500	CR-PUG 0806	8.0	6.0	16.7	14.7	46.2	17.3	15.6	23.1	21.9	13.0	11.0	15.0	13.0	27.8	30
95684700	CR-PUG 1008	10.0	8.0	19.3	16.7	51.6	19.4	17.3	25.8	25.1	16.0	13.0	18.5	15.0	36.0	20
95685000	CR-PUG 1210	12.0	10.0	23.2	19.3	61.8	22.4	19.4	30.9	27.5	19.5	16.0	22.5	18.5	54.8	15

CR-PWT

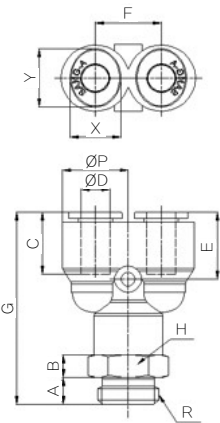
(Male Y)



CODE	MODEL	ØD	ØP	A	B	C	E	F	G	R	H	X	Y	W.G(g)	Q'ty/ inbox
95090402	CR-PWT 04M5	4.0	11.8	4.0	8.0	14.5	13.1	10.8	39.4	M5	13.0	8.6	10.8	23.4	50
95090411	CR-PWT 0401	4.0	11.8	8.0	8.0	14.5	13.1	10.8	43.4	PT 1/8	13.0	8.6	10.8	26.1	50
95090412	CR-PWT 0402	4.0	11.8	11.0	8.0	14.5	13.1	10.8	46.4	PT 1/4	14.0	8.6	10.8	34.4	50
95090602	CR-PWT 06M5	6.0	14.7	4.0	8.0	15.6	14.9	13.6	43.5	M5	15.0	11.0	13.0	37.4	50
95090611	CR-PWT 0601	6.0	14.7	8.0	8.0	15.6	14.9	13.6	47.5	PT 1/8	15.0	11.0	13.0	38.9	50
95090612	CR-PWT 0602	6.0	14.7	11.0	8.0	15.6	14.9	13.6	50.5	PT 1/4	15.0	11.0	13.0	45.6	50
95090811	CR-PWT 0801	8.0	16.7	8.0	8.0	17.3	18.1	15.4	54.6	PT 1/8	17.0	13.0	15.0	45.5	50
95090812	CR-PWT 0802	8.0	16.7	11.0	8.0	17.3	18.1	15.4	57.6	PT 1/4	17.0	13.0	15.0	51.7	50
95090813	CR-PWT 0803	8.0	16.7	12.0	8.0	17.3	18.1	15.4	58.6	PT 3/8	17.0	13.0	15.0	60.4	25
95091012	CR-PWT 1002	10.0	19.3	11.0	8.0	19.4	17.5	17.7	59.5	PT 1/4	20.0	16.0	18.5	65.3	25
95091013	CR-PWT 1003	10.0	19.3	12.0	8.0	19.4	17.5	17.7	60.5	PT 3/8	20.0	16.0	18.5	73.7	25
95091014	CR-PWT 1004	10.0	19.3	15.0	8.0	19.4	17.5	17.7	63.5	PT 1/2	21.0	16.0	18.5	94.1	25
95091212	CR-PWT 1202	12.0	23.2	11.0	8.0	22.4	20.9	21.5	66.7	PT 1/4	24.0	19.5	22.5	100.8	20
95091213	CR-PWT 1203	12.0	23.2	12.0	8.0	22.4	20.9	21.5	67.7	PT 3/8	24.0	19.5	22.5	101.1	20
95091214	CR-PWT 1204	12.0	23.2	15.0	8.0	22.4	20.9	21.5	70.7	PT 1/2	24.0	19.5	22.5	118.6	20

CR-PWT(G)

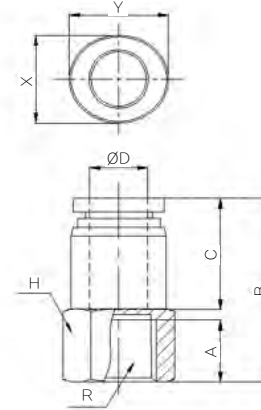
(Male Y)



CODE	MODEL	ØD	ØP	A	B	C	E	F	G	R	H	X	Y	W.G(g)	Q'ty/ inbox	(mm)
95090431	CR-PWT 04G01	4.0	11.8	5.3	8.0	14.5	13.1	10.8	40.7	PF 1/8	13.0	8.6	10.8	23.9	50	
95090432	CR-PWT 04G02	4.0	11.8	6.0	8.0	14.5	13.1	10.8	41.4	PF 1/4	17.0	8.6	10.8	33.3	50	
95090631	CR-PWT 06G01	6.0	14.7	5.3	8.0	15.6	14.9	13.6	44.8	PF 1/8	15.0	11.0	13.0	36.9	50	
95090632	CR-PWT 06G02	6.0	14.7	6.0	8.0	15.6	14.9	13.6	45.5	PF 1/4	17.0	11.0	13.0	43.1	50	
95090831	CR-PWT 08G01	8.0	16.7	5.3	8.0	17.3	18.1	15.4	51.9	PF 1/8	17.0	13.0	15.0	43.9	50	
95090832	CR-PWT 08G02	8.0	16.7	6.0	8.0	17.3	18.1	15.4	52.6	PF 1/4	17.0	13.0	15.0	46.6	50	
95090833	CR-PWT 08G03	8.0	16.7	7.0	8.0	17.3	18.1	15.4	53.6	PF 3/8	20.0	13.0	15.0	57.3	25	
95091032	CR-PWT 10G02	10.0	19.3	6.0	8.0	19.4	17.5	17.7	54.5	PF 1/4	20.0	16.0	18.5	60.8	25	
95091033	CR-PWT 10G03	10.0	19.3	7.0	8.0	19.4	17.5	17.7	55.5	PF 3/8	20.0	16.0	18.5	65.3	25	
95091034	CR-PWT 10G04	10.0	19.3	8.5	8.0	19.4	17.5	17.7	57.0	PF 1/2	24.0	16.0	18.5	84.5	25	
95091232	CR-PWT 12G02	12.0	23.2	6.0	8.0	22.4	20.9	21.5	61.7	PF 1/4	24.0	19.5	22.5	96.4	20	
95091233	CR-PWT 12G03	12.0	23.2	7.0	8.0	22.4	20.9	21.5	62.7	PF 3/8	24.0	19.5	22.5	93.8	20	
95091234	CR-PWT 12G04	12.0	23.2	8.5	8.0	22.4	20.9	21.5	64.2	PF 1/2	24.0	19.5	22.5	103.0	20	

CR-PCF(G)

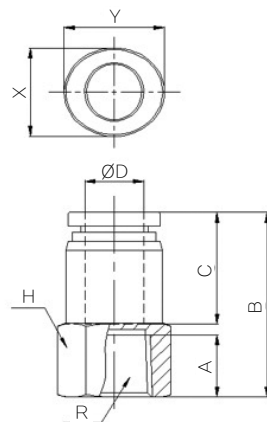
(Female Straight)



CODE	MODEL	ØD	A	B	C	H	R	X	Y	W.G(g)	Q'ty/ inbox	(mm)
95230441	CR-PCF 04G01	4.0	9.0	24.4	14.5	13.0	PT1/8	8.6	10.8	13.8	50	
95230641	CR-PCF 06G01	6.0	9.0	25.7	15.6	13.0	PT1/8	11.0	13.0	18.0	40	
95230642	CR-PCF 06G02	6.0	12.0	28.7	15.6	17.0	PT1/4	11.0	13.0	27.3	40	
95230841	CR-PCF 08G01	8.0	9.0	27.2	17.3	14.0	PT1/8	13.0	15.0	19.9	40	
95230842	CR-PCF 08G02	8.0	12.0	30.2	17.3	17.0	PT1/4	13.0	15.0	27.3	40	
95231042	CR-PCF 10G02	10.0	12.0	32.3	19.4	17.0	PT1/4	16.0	18.5	32.0	40	
95231043	CR-PCF 10G03	10.0	13.0	33.3	19.4	19.0	PT3/8	16.0	18.5	33.2	20	
95231243	CR-PCF 12G03	12.0	13.0	36.3	22.4	20.0	PT3/8	19.5	22.5	45.6	20	
95231244	CR-PCF 12G04	12.0	16.0	39.3	22.4	24.0	PT1/2	19.5	22.5	58.8	20	

CR-PCF(R)

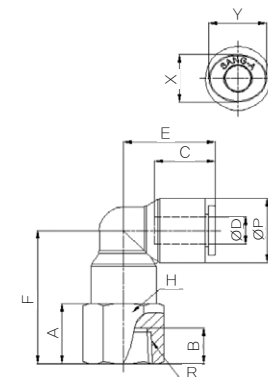
(Female Straight)



CODE	MODEL	ØD	A	B	C	H	R	X	Y	W.G(g)	Q'ty/ inbox	(mm)
95230421	CR-PCF 0401	4.0	9.0	24.4	14.5	13.0	PT1/8	8.6	10.8	14.1	50	
95230621	CR-PCF 0601	6.0	9.0	25.7	15.6	13.0	PT1/8	11.0	13.0	18.3	40	
95230622	CR-PCF 0602	6.0	12.0	28.7	15.6	17.0	PT1/4	11.0	13.0	27.9	40	
95230821	CR-PCF 0801	8.0	9.0	27.2	17.3	14.0	PT1/8	13.0	15.0	20.2	40	
95230822	CR-PCF 0802	8.0	12.0	30.2	17.3	17.0	PT1/4	13.0	15.0	27.9	40	
95231022	CR-PCF 1002	10.0	12.0	32.3	19.4	17.0	PT1/4	16.0	18.5	32.6	40	
95231023	CR-PCF 1003	10.0	13.0	33.3	19.4	19.0	PT3/8	16.0	18.5	34.2	20	
95231223	CR-PCF 1203	12.0	13.0	36.3	22.4	20.0	PT3/8	19.5	22.5	46.5	20	
95231224	CR-PCF 1204	12.0	16.0	39.3	22.4	24.0	PT1/2	19.5	22.5	60.7	20	

CR-PLF

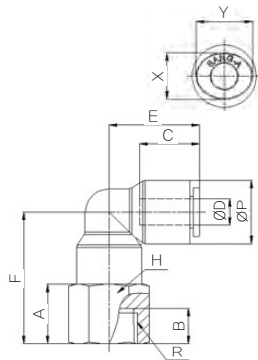
(Female Elbow)



CODE	MODEL	ØD	ØP	A	B	C	E	F	R	H	X	Y	W.G(g)	Q'ty/ inbox	(mm)
95300402	CR-PLF 04M5	4.0	11.8	8.0	5.0	14.5	18.0	22.4	M5	13.0	8.6	10.8	17.1	50	
95300411	CR-PLF 0401	4.0	11.8	11.0	9.0	14.5	18.0	25.4	PT 1/8	13.0	8.6	10.8	17.6	50	
95300412	CR-PLF 0402	4.0	11.8	14.0	12.0	14.5	18.0	28.4	PT 1/4	16.0	8.6	10.8	24.1	50	
95300602	CR-PLF 06M5	6.0	14.7	8.0	5.0	15.6	20.6	24.7	M5	15.0	11.0	13.0	26.3	50	
95300611	CR-PLF 0601	6.0	14.7	11.0	9.0	15.6	20.6	27.7	PT 1/8	15.0	11.0	13.0	28.0	40	
95300612	CR-PLF 0602	6.0	14.7	14.0	12.0	15.6	20.6	30.7	PT 1/4	16.0	11.0	13.0	30.3	40	
95300811	CR-PLF 0801	8.0	16.7	10.0	9.0	17.3	23.1	29.0	PT 1/8	17.0	13.0	15.0	33.5	40	
95300812	CR-PLF 0802	8.0	16.7	14.0	12.0	17.3	23.1	33.0	PT 1/4	17.0	13.0	15.0	35.8	40	
95300813	CR-PLF 0803	8.0	16.7	15.0	13.0	17.3	23.1	34.0	PT 3/8	19.0	13.0	15.0	37.2	25	
95301012	CR-PLF 1002	10.0	19.3	14.0	12.0	19.4	25.8	34.8	PT 1/4	20.0	16.0	18.5	54.2	25	
95301013	CR-PLF 1003	10.0	19.3	15.0	13.0	19.4	25.8	35.8	PT 3/8	20.0	16.0	18.5	48.9	20	
95301014	CR-PLF 1004	10.0	19.3	19.0	16.0	19.4	25.8	39.8	PT 1/2	24.0	16.0	18.5	66.8	20	
95301212	CR-PLF 1202	12.0	23.2	14.0	12.0	22.4	30.9	39.0	PT 1/4	24.0	19.5	22.5	86.0	20	
95301213	CR-PLF 1203	12.0	23.2	15.0	13.0	22.4	30.9	40.0	PT 3/8	24.0	19.5	22.5	82.0	20	
95301214	CR-PLF 1204	12.0	23.2	19.0	16.0	22.4	30.9	44.0	PT 1/2	24.0	19.5	22.5	81.5	20	

CR-PLF(G)

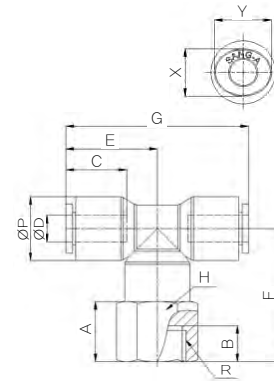
(Female Elbow)



CODE	MODEL	ØD	ØP	A	B	C	E	F	R	H	X	Y	W.G(g)	Q'ty/ inbox
95300431	CR-PLF 04G01	4.0	11.8	10.0	9.0	14.5	18.0	24.4	PF 1/8	13.0	8.6	10.8	16.3	50
95300432	CR-PLF 04G02	4.0	11.8	14.0	12.0	14.5	18.0	28.4	PF 1/4	16.0	8.6	10.8	24.2	50
95300631	CR-PLF 06G01	6.0	14.7	10.0	9.0	15.6	20.6	26.7	PF 1/8	15.0	11.0	13.0	26.3	40
95300632	CR-PLF 06G02	6.0	14.7	14.0	12.0	15.6	20.6	30.7	PF 1/4	16.0	11.0	13.0	30.3	40
95300831	CR-PLF 08G01	8.0	16.7	10.0	9.0	17.3	23.1	29.0	PF 1/8	17.0	13.0	15.0	33.2	40
95300832	CR-PLF 08G02	8.0	16.7	14.0	12.0	17.3	23.1	33.0	PF 1/4	17.0	13.0	15.0	35.2	40
95300833	CR-PLF 08G03	8.0	16.7	15.0	13.0	17.3	23.1	34.0	PF 3/8	19.0	13.0	15.0	42.8	25
95301032	CR-PLF 10G02	10.0	19.3	14.0	12.0	19.4	25.8	34.8	PF 1/4	20.0	16.0	18.5	53.6	25
95301033	CR-PLF 10G03	10.0	19.3	15.0	13.0	19.4	25.8	35.8	PF 3/8	20.0	16.0	18.5	48.4	20
95301034	CR-PLF 10G04	10.0	19.3	19.0	16.0	19.4	25.8	39.8	PF 1/2	24.0	16.0	18.5	65.1	20
95301232	CR-PLF 12G02	12.0	23.2	14.0	12.0	22.4	30.9	39.0	PF 1/4	24.0	19.5	22.5	85.4	20
95301233	CR-PLF 12G03	12.0	23.2	15.0	13.0	22.4	30.9	40.0	PF 3/8	24.0	19.5	22.5	81.1	20
95301234	CR-PLF 12G04	12.0	23.2	19.0	16.0	22.4	30.9	44.0	PF 1/2	24.0	19.5	22.5	84.5	20

CR-PTF(G)

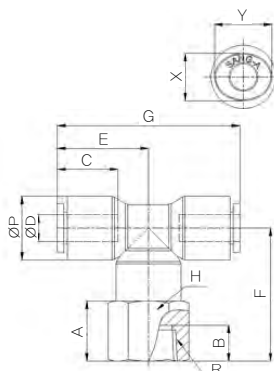
(Female Branch Tee)



CODE	MODEL	ØD	ØP	A	B	C	E	F	G	R	H	X	Y	W.G(g)	Q'ty/ inbox
95390441	CR-PTF 04G01	4.0	11.8	11.0	9.0	14.5	18.0	25.4	36.0	PT 1/8	13.0	8.6	10.8	20.2	50
95390442	CR-PTF 04G02	4.0	11.8	14.0	12.0	14.5	18.0	28.4	36.0	PT 1/4	16.0	8.6	10.8	28.2	50
95390641	CR-PTF 06G01	6.0	14.7	10.0	9.0	15.6	20.6	26.7	41.2	PF 1/8	15.0	11.0	13.0	34.1	40
95390642	CR-PTF 06G02	6.0	14.7	14.0	12.0	15.6	20.6	30.7	41.2	PF 1/4	16.0	11.0	13.0	38.1	40
95390841	CR-PTF 08G01	8.0	16.7	10.0	9.0	17.3	23.1	29.0	46.2	PF 1/8	17.0	13.0	15.0	42.1	40
95390842	CR-PTF 08G02	8.0	16.7	14.0	12.0	17.3	23.1	33.0	46.2	PF 1/4	17.0	13.0	15.0	44.1	25
95390843	CR-PTF 08G03	8.0	16.7	15.0	13.0	17.3	23.1	34.0	46.2	PF 3/8	19.0	13.0	15.0	51.7	25
95391032	CR-PTF 10G02	10.0	19.3	14.0	12.0	19.4	25.8	34.8	51.6	PF 1/4	20.0	16.0	18.5	64.9	20
95391033	CR-PTF 10G03	10.0	19.3	15.0	13.0	19.4	25.8	35.8	51.6	PF 3/8	20.0	16.0	18.5	59.7	20
95391034	CR-PTF 10G04	10.0	19.3	19.0	16.0	19.4	25.8	39.8	51.6	PF 1/2	24.0	16.0	18.5	76.4	20
95391232	CR-PTF 12G02	12.0	23.2	14.0	12.0	22.4	30.9	39.0	61.8	PF 1/4	24.0	19.5	22.5	103.1	15
95391233	CR-PTF 12G03	12.0	23.2	15.0	13.0	22.4	30.9	40.0	61.8	PF 3/8	24.0	19.5	22.5	98.7	15
95391234	CR-PTF 12G04	12.0	23.2	19.0	16.0	22.4	30.9	44.0	61.8	PF 1/2	24.0	19.5	22.5	102.2	15

CR-PTF

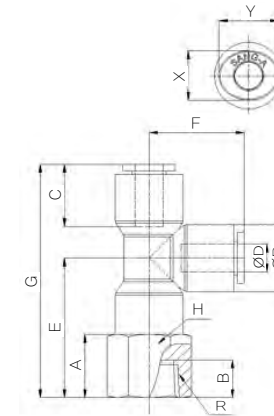
(Female Branch Tee)



CODE	MODEL	ØD	ØP	A	B	C	E	F	G	R	H	X	Y	W.G(g)	Q'ty/ inbox
95390402	CR-PTF 04M5	4.0	11.8	8.0	5.0	14.5	18.0	22.4	36.0	M5	13.0	8.6	10.8	21.1	50
95390421	CR-PTF 0401	4.0	11.8	11.0	9.0	14.5	18.0	25.4	36.0	PT 1/8	13.0	8.6	10.8	21.5	50
95390422	CR-PTF 0402	4.0	11.8	14.0	12.0	14.5	18.0	28.4	36.0	PT 1/4	16.0	8.6	10.8	28.0	50
95390602	CR-PTF 06M5	6.0	14.7	8.0	5.0	15.6	20.6	24.7	41.2	M5	15.0	11.0	13.0	34.2	40
95390621	CR-PTF 0601	6.0	14.7	11.0	9.0	15.6	20.6	27.7	41.2	PT 1/8	15.0	11.0	13.0	35.8	40
95390622	CR-PTF 0602	6.0	14.7	14.0	12.0	15.6	20.6	30.7	41.2	PT 1/4	16.0	11.0	13.0	38.1	40
95390821	CR-PTF 0801	8.0	16.7	10.0	9.0	17.3	23.1	29.0	46.2	PT 1/8	17.0	13.0	15.0	42.4	40
95390822	CR-PTF 0802	8.0	16.7	14.0	12.0	17.3	23.1	33.0	46.2	PT 1/4	17.0	13.0	15.0	44.7	25
95390823	CR-PTF 0803	8.0	16.7	15.0	13.0	17.3	23.1	34.0	46.2	PT 3/8	19.0	13.0	15.0	46.1	25
95391012	CR-PTF 1002	10.0	19.3	14.0	12.0	19.4	25.8	34.8	51.6	PT 1/4	20.0	16.0	18.5	65.5	20
95391013	CR-PTF 1003	10.0	19.3	15.0	13.0	19.4	25.8	35.8	51.6	PT 3/8	20.0	16.0	18.5	60.3	20
95391014	CR-PTF 1004	10.0	19.3	19.0	16.0	19.4	25.8	39.8	51.6	PT 1/2	24.0	16.0	18.5	78.1	20
95391212	CR-PTF 1202	12.0	23.2	14.0	12.0	22.4	30.9	39.0	61.8	PT 1/4	24.0	19.5	22.5	103.6	15
95391213	CR-PTF 1203	12.0	23.2	15.0	13.0	22.4	30.9	40.0	61.8	PT 3/8	24.0	19.5	22.5	99.6	15
95391214	CR-PTF 1204	12.0	23.2	19.0	16.0	22.4	30.9	44.0	61.8	PT 1/2	24.0	19.5	22.5	99.1	15

CR-PSTF

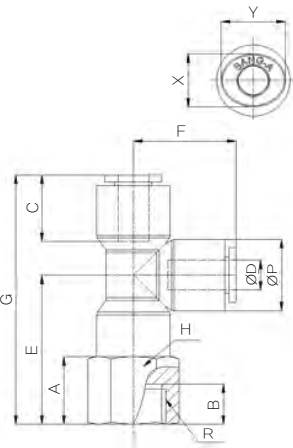
(Female Run Tee)



CODE	MODEL	ØD	ØP	A	B	C	E	F	G	R	H	X	Y	W.G(g)	Q'ty/ inbox
95820402	CR-PSTF 04M5	4.0	11.8	8.0	5.0	14.5	22.4	18.0	40.4	M5	13.0	8.6	10.8	21.1	50
95820421	CR-PSTF 0401	4.0	11.8	11.0	9.0	14.5	25.4	18.0	43.4	PT 1/8	13.0	8.6	10.8	21.5	50
95820422	CR-PSTF 0402	4.0	11.8	14.0	12.0	14.5	28.4	18.0	46.4	PT 1/4	16.0	8.6	10.8	28.0	50
95820602	CR-PSTF 06M5	6.0	14.7	8.0	5.0	15.6	24.7	20.6	45.3	M5	15.0	11.0	13.0	34.2	40
95820621	CR-PSTF 0601	6.0	14.7	11.0	9.0	15.6	27.7	20.6	48.3	PT 1/8	15.0	11.0	13.0	35.8	40
95820622	CR-PSTF 0602	6.0	14.7	14.0	12.0	15.6	30.7	20.6	51.3	PT 1/4	16.0	11.0	13.0	38.1	40
95820821	CR-PSTF 0801	8.0	16.7	10.0	9.0	17.3	29.0	23.1	52.1	PT 1/8	17.0	13.0	15.0	42.4	40
95820822	CR-PSTF 0802	8.0	16.7	14.0	12.0	17.3	33.0	23.1	56.1	PT 1/4	17.0	13.0	15.0	44.7	25
95820823	CR-PSTF 0803	8.0	16.7	15.0	13.0	17.3	34.0	23.1	57.1	PT 3/8	19.0	13.0	15.0	46.1	25
95821012	CR-PSTF 1002	10.0	19.3	14.0	12.0	19.4	34.8	25.8	60.6	PT 1/4	20.0	16.0	18.5	65.5	20
95821013	CR-PSTF 1003	10.0	19.3	15.0	13.0	19.4	35.8	25.8	61.6	PT 3/8	20.0	16.0	18.5	60.3	20
95821014	CR-PSTF 1004	10.0	19.3	19.0	16.0	19.4	39.8	25.8	65.6	PT 1/2	24.0	16.0	18.5	78.1	20
95821212	CR-PSTF 1202	12.0	23.2	14.0	12.0	22.4	39.0	30.9	69.9	PT 1/4	24.0	19.5	22.5	103.6	15
95821213	CR-PSTF 1203	12.0	23.2	15.0	13.0	22.4	40.0	30.9	70.9	PT 3/8	24.0	19.5	22.5	99.6	15
95821214	CR-PSTF 1204	12.0	23.2	19.0	16.0	22.4	44.0	30.9	74.9	PT 1/2	24.0	19.5	22.5	99.1	15

CR-PSTF(G)

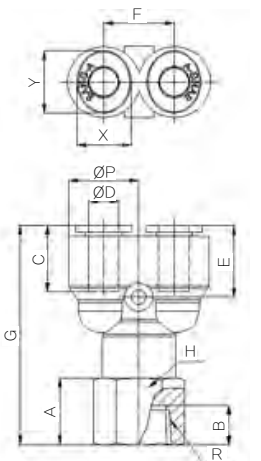
(Female Run Tee)



CODE	MODEL	ØD	ØP	A	B	C	E	F	G	R	H	X	Y	W.G(g)	Q'ty/ inbox	(mm)
95820441	CR-PSTF 04G01	4.0	11.8	11.0	9.0	14.5	25.4	18.0	43.4	PF 1/8	13.0	8.6	10.8	20.2	50	
95820442	CR-PSTF 04G02	4.0	11.8	14.0	12.0	14.5	28.4	18.0	46.4	PF 1/4	17.0	8.6	10.8	28.2	50	
95820641	CR-PSTF 06G01	6.0	14.7	10.0	9.0	15.6	26.9	20.6	47.5	PF 1/8	15.0	11.0	13.0	34.1	40	
95820642	CR-PSTF 06G02	6.0	14.7	14.0	12.0	15.6	30.7	20.6	51.3	PF 1/4	16.0	11.0	13.0	38.1	40	
95820841	CR-PSTF 08G01	8.0	16.7	10.0	9.0	17.3	29.0	23.1	52.1	PF 1/8	17.0	13.0	15.0	42.1	40	
95820842	CR-PSTF 08G02	8.0	16.7	14.0	12.0	17.3	33.0	23.1	56.1	PF 1/4	17.0	13.0	15.0	44.1	25	
95820843	CR-PSTF 08G03	8.0	16.7	15.0	13.0	17.3	34.0	23.1	57.1	PF 3/8	19.0	13.0	15.0	51.7	25	
95821032	CR-PSTF 10G02	10.0	19.3	14.0	12.0	19.4	34.8	25.8	60.6	PF 1/4	20.0	16.0	18.5	64.9	20	
95821033	CR-PSTF 10G03	10.0	19.3	15.0	13.0	19.4	35.8	25.8	61.6	PF 3/8	20.0	16.0	18.5	59.7	20	
95821034	CR-PSTF 10G04	10.0	19.3	19.0	16.0	19.4	39.8	25.8	65.6	PF 1/2	24.0	16.0	18.5	76.4	20	
95821232	CR-PSTF 12G02	12.0	23.2	14.0	12.0	22.4	39.0	30.9	69.9	PF 1/4	24.0	19.5	22.5	103.1	15	
95821233	CR-PSTF 12G03	12.0	23.2	15.0	13.0	22.4	40.0	30.9	70.9	PF 3/8	24.0	19.5	22.5	98.7	15	
95821234	CR-PSTF 12G04	12.0	23.2	19.0	16.0	22.4	44.0	30.9	74.9	PF 1/2	24.0	19.5	22.5	102.2	15	

CR-PWF

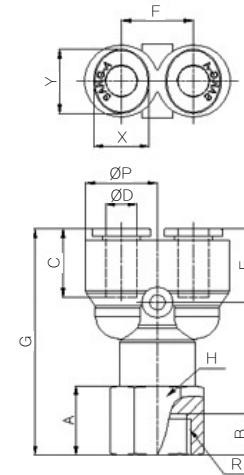
(Female Y)



CODE	MODEL	ØD	ØP	A	B	C	E	F	G	R	H	X	Y	W.G(g)	Q'ty/ inbox	(mm)
95830402	CR-PWF 04M5	4.0	11.8	8.0	5.0	14.5	13.1	10.8	35.4	M5	13.0	8.6	10.8	21.4	50	
95830421	CR-PWF 0401	4.0	11.8	11.0	9.0	14.5	13.1	10.8	38.4	PT 1/8	13.0	8.6	10.8	21.8	50	
95830422	CR-PWF 0402	4.0	11.8	14.0	12.0	14.5	13.1	10.8	41.4	PT 1/4	16.0	8.6	10.8	28.3	50	
95830602	CR-PWF 06M5	6.0	14.7	8.0	5.0	15.6	14.9	13.6	39.5	M5	15.0	11.0	13.0	34.7	50	
95830621	CR-PWF 0601	6.0	14.7	11.0	9.0	15.6	14.9	13.6	42.5	PT 1/8	15.0	11.0	13.0	36.4	50	
95830622	CR-PWF 0602	6.0	14.7	14.0	12.0	15.6	14.9	13.6	45.5	PT 1/4	16.0	11.0	13.0	38.7	50	
95830821	CR-PWF 0801	8.0	16.7	10.0	9.0	17.3	18.1	15.4	48.6	PT 1/8	17.0	13.0	15.0	44.8	50	
95830822	CR-PWF 0802	8.0	16.7	14.0	12.0	17.3	18.1	15.4	52.6	PT 1/4	17.0	13.0	15.0	47.2	50	
95830823	CR-PWF 0803	8.0	16.7	15.0	13.0	17.3	18.1	15.4	53.6	PT 3/8	19.0	13.0	15.0	48.6	25	
95831022	CR-PWF 1002	10.0	19.3	14.0	12.0	19.4	17.5	17.7	54.5	PT 1/4	20.0	16.0	18.5	67.7	25	
95831023	CR-PWF 1003	10.0	19.3	15.0	13.0	19.4	17.5	17.7	55.5	PT 3/8	20.0	16.0	18.5	62.4	25	
95831024	CR-PWF 1004	10.0	19.3	19.0	16.0	19.4	17.5	17.7	59.5	PT 1/2	24.0	16.0	18.5	80.3	25	
95831222	CR-PWF 1202	12.0	23.2	14.0	12.0	22.4	20.9	21.5	61.7	PT 1/4	24.0	19.5	22.5	106.3	20	
95831223	CR-PWF 1203	12.0	23.2	15.0	13.0	22.4	20.9	21.5	62.7	PT 3/8	24.0	19.5	22.5	102.3	20	
95831224	CR-PWF 1204	12.0	23.2	19.0	16.0	22.4	20.9	21.5	66.7	PT 1/2	24.0	19.5	22.5	101.8	20	

CR-PWF(G)

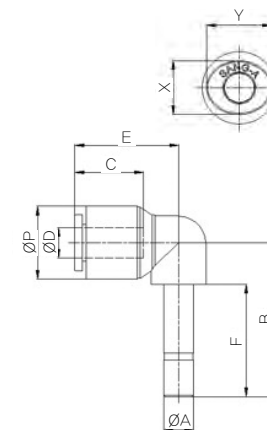
(Female Y)



CODE	MODEL	ØD	ØP	A	B	C	E	F	G	R	H	X	Y	W.G(g)	Q'ty/ inbox	(mm)
95830441	CR-PWF 04G01	4.0	11.8	10.0	9.0	14.5	13.1	10.8	37.4	PF 1/8	13.0	8.6	10.8	20.5	50	
95830442	CR-PWF 04G02	4.0	11.8	14.0	12.0	14.5	13.1	10.8	41.4	PF 1/4	16.0	8.6	10.8	28.5	50	
95830641	CR-PWF 06G01	6.0	14.7	10.0	9.0	15.6	14.9	13.6	41.5	PF 1/8	15.0	11.0	13.0	34.7	50	
95830642	CR-PWF 06G02	6.0	14.7	14.0	12.0	15.6	14.9	13.6	45.5	PF 1/4	16.0	11.0	13.0	38.7	50	
95830841	CR-PWF 08G01	8.0	16.7	10.0	9.0	17.3	18.1	15.4	48.6	PF 1/8	17.0	13.0	15.0	44.5	50	
95830842	CR-PWF 08G02	8.0	16.7	14.0	12.0	17.3	18.1	15.4	52.6	PF 1/4	17.0	13.0	15.0	46.5	50	
95830843	CR-PWF 08G03	8.0	16.7	15.0	13.0	17.3	18.1	15.4	53.6	PF 3/8	19.0	13.0	15.0	54.2	25	
95831042	CR-PWF 10G02	10.0	19.3	14.0	12.0	19.4	17.5	17.7	54.5	PF 1/4	20.0	16.0	18.5	67.1	25	
95831043	CR-PWF 10G03	10.0	19.3	15.0	13.0	19.4	17.5	17.7	55.5	PF 3/8	20.0	16.0	18.5	61.9	25	
95831044	CR-PWF 10G04	10.0	19.3	19.0	16.0	19.4	17.5	17.7	59.5	PF 1/2	24.0	16.0	18.5	78.5	25	
95831242	CR-PWF 12G02	12.0	23.2	14.0	12.0	22.4	20.9	21.5	61.7	PF 1/4	24.0	19.5	22.5	105.7	20	
95831243	CR-PWF 12G03	12.0	23.2	15.0	13.0	22.4	20.9	21.5	62.7	PF 3/8	24.0	19.5	22.5	101.4	20	
95831244	CR-PWF 12G04	12.0	23.2	19.0	16.0	22.4	20.9	21.5	66.7	PF 1/2	24.0	19.5	22.5	104.9	20	

CR-PLJ

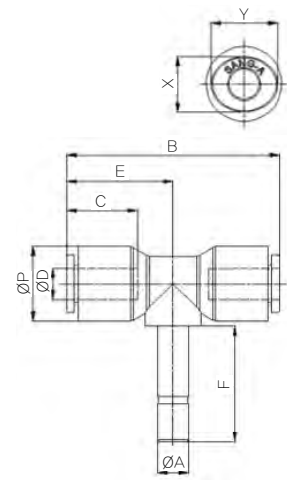
(Plug-in Elbow)



CODE	MODEL	ØD	ØP	ØA	B	C	E	F	X	Y	W.G(g)	Q'ty/ inbox	(mm)
95140400	CR-PLJ 04	4.0	11.9	4.0	24.0	14.5	18.1	17.5	8.6	10.8	5.7	100	
95140600	CR-PLJ 06	6.0	14.9	6.0	31.5	15.6	20.9	23.0	11.0	13.0	10.6	50	
95140800	CR-PLJ 08	8.0	16.9	8.0	34.5	17.3	23.1	25.0	13.0	15.0	12.8	50	
95141000	CR-PLJ 10	10.0	19.5	10.0	38.0	19.4	26.0	27.0	16.0	18.5	18.4	25	
95141200	CR-PLJ 12	12.0	23.5	12.0	41.8	22.4	30.9	29.0	19.5	22.5	27.5	25	

CR-PTJ

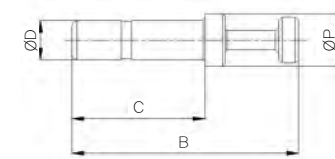
(Plug-in Tee)



CODE	MODEL	ØD	ØP	ØA	B	C	E	F	X	Y	W.G(g)	Q'ty/ inbox
95790400	CR-PTJ 04	4.0	11.9	4.0	36.2	14.5	18.1	17.5	8.6	10.8	10.3	50
95790600	CR-PTJ 06	6.0	14.9	6.0	41.8	15.6	20.9	23.0	11.0	13.0	18.3	25
95790800	CR-PTJ 08	8.0	16.9	8.0	46.2	17.3	23.1	25.0	13.0	15.0	21.3	25
95791100	CR-PTJ 10	10.0	19.5	10.0	52.0	19.4	26.0	27.0	16.0	18.5	30.4	16
95791200	CR-PTJ 12	12.0	23.5	12.0	61.8	22.4	30.9	29.0	19.5	22.5	45.9	16

CR-PP

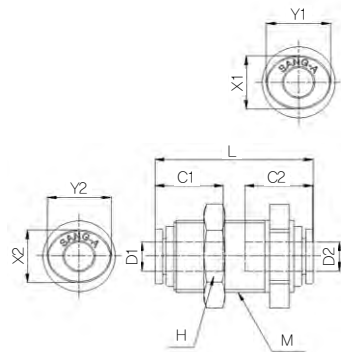
(Plug)



CODE	MODEL	ØD	ØP	B	C	W.G(g)	Q'ty/ inbox
95340400	CR-PP 04	4.0	6.0	28.5	17.5	0.5	100
95340600	CR-PP 06	6.0	8.0	34.0	20.0	1.2	100
95340800	CR-PP 08	8.0	10.0	41.0	22.0	2.1	100
95341000	CR-PP 10	10.0	12.0	40.9	25.0	3.1	50
95341200	CR-PP 12	12.0	14.0	43.0	27.0	4.5	50

CR-PPM

(Bulkhead Union P)



CODE	MODEL	ØD1	ØD2	L	C1	C2	H	M	X1	X2	Y1	Y2	W.G(g)	Q'ty/ inbox
95550400	CR-PPM 04	4.0	4.0	30.0	14.5	14.5	17.0	M12X1	8.6	8.6	10.8	10.8	19.9	100
95550600	CR-PPM 06	6.0	6.0	32.2	15.6	15.6	19.0	M15X1	11.0	11.0	13.0	13.0	27.2	50
95550800	CR-PPM 08	8.0	8.0	35.6	17.3	17.3	22.0	M17X1	13.0	13.0	15.0	15.0	34.1	50
95551000	CR-PPM 10	10.0	10.0	40.0	19.4	19.4	27.0	M20X1	16.0	16.0	18.5	18.5	53.7	20
95551200	CR-PPM 12	12.0	12.0	46.8	22.4	22.4	30.0	M24X1	19.5	19.5	22.5	22.5	77.1	20