

Application & Feature

- Tube fitting of one-touch type for use in a high temperature, the chemical liquid and the liquid. (hot water, coffee, steam, etc.)
- Used for a wide variety of models to meet all needs.
- Product made of suitable material for use up to 150°C. (hot water, coffee, steam, etc.)
- Easy to connect/disconnect tube by one touch.
- Flexible for directional tube laying given its revolving construction of body.
- Elliptical sleeve makes it possible to apply and remove the tube easily in confined space.
- The parts are washed, assembled and packed in a clean room.

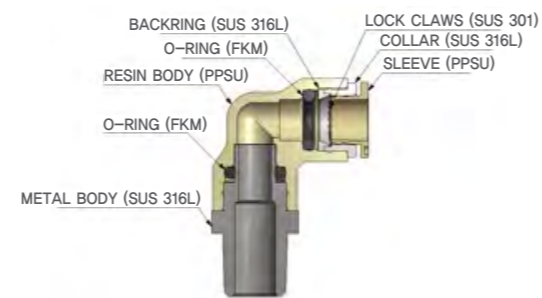
Specification

Fluid	Water, Steam, Air, Oil	
Working Pressure Range	0~290psi	0~20kgf/cm ² (0~2MPa)
Temperature Range	-4°F~284°F	-20~150°C
Applicable Tube Material	Polyurethane and Nylon	

Maximum Usable Pressure

SIZE	ø 4	ø 6	ø 8	ø 10	ø 12
20°C	0~20kgf/cm ²		0~16kgf/cm ²		
100°C	0~16kgf/cm ²		0~12kgf/cm ²		
140°C	0~10kgf/cm ²		0~6kgf/cm ²		

Structural Diagram



Produce Code System

PL	08	02
①	②	③

- ① TYPE
② Tube Dia (øD)

Code	04	06	08	10	12
Dia	ø 4	ø 6	ø 8	ø 10	ø 12

- ③ Thread Size *Metric Thread & R(PT) Thread

	Metric size		Taper Pipe Thread		
Code	M5	01	02	03	04
Size	M5x0.8	R1/8	R1/4	R3/8	R1/2

	Parallel Thread			
Code	G01	G02	G03	G04
Size	G1/8	G1/4	G3/8	G1/2

Heat Resistant Fittings

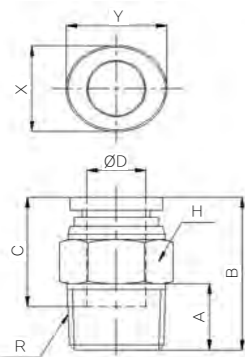
HR-PC(R) (Male Straight) 	HR-PC(G) (Male Straight) 	HR-PL (Male Elbow) 	HR-PL(G) (Male Elbow) 	HR-PT (Male Branch Tee) 	HR-PT(G) (Male Branch Tee)
HR-PST (Male Run Tee) 	HR-PST(G) (Male Run Tee) 	HR-PUC (Union Straight) 	HR-PUL (Union Elbow) 	HR-PUT (Union Tee) 	HR-PY (Union Y)
HR-PG (Reducer) 	HR-PUG (Different Dia of Union Tee) 	HR-PW (Reducer Y) 	HR-PWT (Male Y) 	HR-PWT(G) (Male Y) 	HR-PCF(R) (Female Straight)
HR-PCF(G) (Female Straight) 	HR-PLF (Female Elbow) 	HR-PLF(G) (Female Elbow) 	HR-PTF (Female Branch Tee) 	HR-PTF(G) (Female Branch Tee) 	HR-PSTF (Female Run Tee)
HR-PSTF(G) (Female Run Tee) 	HR-PWF (Female Y) 	HR-PWF(G) (Female Y) 	HR-PLJ (Plug-in Elbow) 	HR-PTJ (Plug-in Tee) 	HR-PPM (Bulkhead Union P)
HR-PP (Plug) 					

CAUTION

1. Avoid randomly product change.
2. Never over pushing to assemble product, it may cause damage.
3. Please check leakage before built.

HR-PC(R)

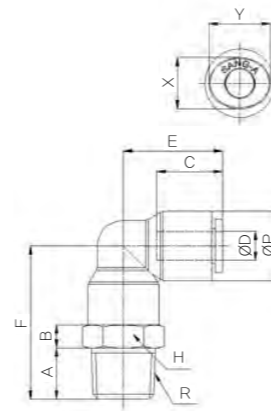
(Male Straight)



CODE	MODEL	ØD	A	B	C	H	R	X	Y	W.G(g)	Q'ty/ inbox	(mm)
94010402	HR-PC 04M5	4.0	4.0	20.4	14.9	10.0	M5	8.6	10.8	7.7	50	
94010411	HR-PC 0401	4.0	8.0	22.5	14.9	10.0	PT1/8	8.6	10.8	10.6	50	
94010602	HR-PC 06M5	6.0	4.0	21.7	15.7	13.0	M5	11.0	13.0	13.3	50	
94010611	HR-PC 0601	6.0	8.0	22.3	15.7	13.0	PT1/8	11.0	13.0	14.1	50	
94010612	HR-PC 0602	6.0	11.0	25.3	15.7	14.0	PT1/4	11.0	13.0	22.3	50	
94010811	HR-PC 0801	8.0	8.0	26.7	17.8	14.0	PT1/8	13.0	15.0	14.9	50	
94010812	HR-PC 0802	8.0	11.0	26.2	17.8	14.0	PT1/4	13.0	15.0	18.9	50	
94011012	HR-PC 1002	10.0	11.0	32.7	19.8	17.0	PT1/4	16.0	18.5	28.7	40	
94011013	HR-PC 1003	10.0	12.0	27.7	19.8	17.0	PT3/8	16.0	18.5	28.8	25	
94011213	HR-PC 1203	12.0	12.0	31.3	22.4	20.0	PT3/8	19.5	22.5	36.6	25	
94011214	HR-PC 1204	12.0	15.0	32.3	22.4	21.0	PT1/2	19.5	22.5	52.0	25	

HR-PL

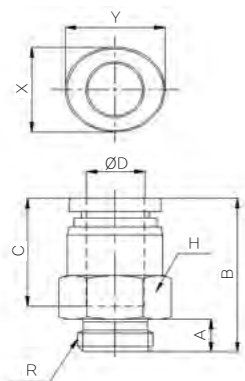
(Male Elbow)



CODE	MODEL	ØD	ØP	A	B	C	E	F	R	H	X	Y	W.G(g)	Q'ty/ inbox	(mm)
94020402	HR-PL 04M5	4.0	11.9	4.0	8.0	14.9	18.5	26.5	M5	13.0	8.6	10.8	18.5	50	
94020411	HR-PL 0401	4.0	11.9	8.0	8.0	14.9	18.5	30.5	PT 1/8	13.0	8.6	10.8	21.2	50	
94020412	HR-PL 0402	4.0	11.9	11.0	8.0	14.9	18.5	33.5	PT 1/4	14.0	8.6	10.8	29.5	50	
94020602	HR-PL 06M5	6.0	14.9	4.0	8.0	15.7	21.0	29.0	M5	15.0	11.0	13.0	28.1	50	
94020611	HR-PL 0601	6.0	14.9	8.0	8.0	15.7	21.0	33.0	PT 1/8	15.0	11.0	13.0	29.6	40	
94020612	HR-PL 0602	6.0	14.9	11.0	8.0	15.7	21.0	36.0	PT 1/4	15.0	11.0	13.0	36.3	40	
94020811	HR-PL 0801	8.0	16.9	8.0	8.0	17.8	23.6	35.0	PT 1/8	17.0	13.0	15.0	33.3	40	
94020812	HR-PL 0802	8.0	16.9	11.0	8.0	17.8	23.6	38.0	PT 1/4	17.0	13.0	15.0	39.5	40	
94020813	HR-PL 0803	8.0	16.9	12.0	8.0	17.8	23.6	39.0	PT 3/8	17.0	13.0	15.0	48.2	25	
94021012	HR-PL 1002	10.0	19.5	11.0	8.0	19.8	26.4	40.0	PT 1/4	20.0	16.0	18.5	50.0	25	
94021013	HR-PL 1003	10.0	19.5	12.0	8.0	19.8	26.4	41.0	PT 3/8	20.0	16.0	18.5	58.4	20	
94021014	HR-PL 1004	10.0	19.5	15.0	8.0	19.8	26.4	44.0	PT 1/2	21.0	16.0	18.5	78.9	20	
94021212	HR-PL 1202	12.0	23.5	11.0	8.0	22.4	30.9	44.0	PT 1/4	24.0	19.5	22.5	77.7	20	
94021213	HR-PL 1203	12.0	23.5	12.0	8.0	22.4	30.9	45.0	PT 3/8	24.0	19.5	22.5	78.0	20	
94021214	HR-PL 1204	12.0	23.5	15.0	8.0	22.4	30.9	48.0	PT 1/2	24.0	19.5	22.5	95.5	20	

HR-PC(G)

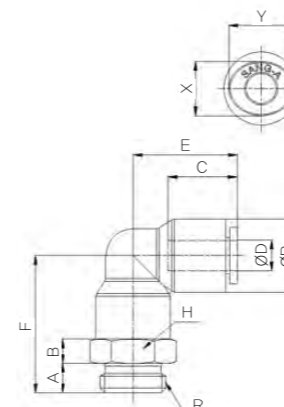
(Male Straight)



CODE	MODEL	ØD	A	B	C	H	R	X	Y	W.G(g)	Q'ty/ inbox	(mm)
94010431	HR-PC 04G01	4.0	5.3	19.8	14.9	14.0	PF1/8	8.6	10.8	12.3	50	
94010631	HR-PC 06G01	6.0	5.3	23.1	15.7	14.0	PF1/8	11.0	13.0	15.3	50	
94010632	HR-PC 06G02	6.0	6.0	20.3	15.7	17.0	PF1/4	11.0	13.0	21.4	50	
94010831	HR-PC 08G01	8.0	5.3	25.5	17.8	14.0	PF1/8	13.0	15.0	15.6	50	
94010832	HR-PC 08G02	8.0	6.0	21.7	17.8	17.0	PF1/4	13.0	15.0	19.1	50	
94011032	HR-PC 10G02	10.0	6.0	28.2	19.8	17.0	PF1/4	16.0	18.5	24.6	40	
94011033	HR-PC 10G03	10.0	7.0	24.7	19.8	21.0	PF3/8	16.0	18.5	31.6	25	
94011233	HR-PC 12G03	12.0	7.0	31.8	22.4	21.0	PF3/8	19.5	22.5	40.8	25	
94011234	HR-PC 12G04	12.0	8.5	28.8	22.4	24.0	PF1/2	19.5	22.5	49.2	25	

HR-PL(G)

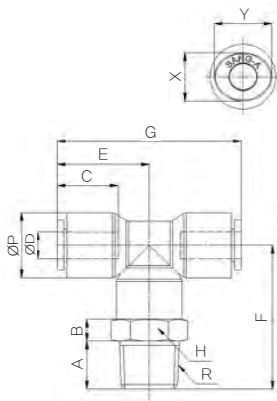
(Male Elbow)



CODE	MODEL	ØD	ØP	A	B	C	E	F	R	H	X	Y	W.G(g)	Q'ty/ inbox	(mm)
94020431	HR-PL 04G01	4.0	11.9	5.3	8.0	14.9	18.5	27.8	PF 1/8	13.0	8.6	10.8	19.0	50	
94020432	HR-PL 04G02	4.0	11.9	6.0	8.0	14.9	18.5	28.5	PF 1/4	17.0	8.6	10.8	28.4	50	
94020631	HR-PL 06G01	6.0	14.9	5.3	8.0	15.7	21.0	30.3	PF 1/8	15.0	11.0	13.0	27.6	40	
94020632	HR-PL 06G02	6.0	14.9	6.0	8.0	15.7	21.0	31.0	PF 1/4	17.0	11.0	13.0	33.8	40	
94020831	HR-PL 08G01	8.0	16.9	5.3	8.0	17.8	23.6	32.3	PF 1/8	17.0	13.0	15.0	31.7	40	
94020832	HR-PL 08G02	8.0	16.9	6.0	8.0	17.8	23.6	33.0	PF 1/4	17.0	13.0	15.0	34.3	40	
94020833	HR-PL 08G03	8.0	16.9	7.0	8.0	17.8	23.6	34.0	PF 3/8	20.0	13.0	15.0	45.1	25	
94021032	HR-PL 10G02	10.0	19.5	6.0	8.0	19.8	26.4	35.0	PF 1/4	20.0	16.0	18.5	45.5	25	
94021033	HR-PL 10G03	10.0	19.5	7.0	8.0	19.8	26.4	36.0	PF 3/8	20.0	16.0	18.5	50.1	25	
94021034	HR-PL 10G04	10.0	19.5	8.5	8.0	19.8	26.4	37.5	PF 1/2	24.0	16.0	18.5	69.3	20	
94021232	HR-PL 12G02	12.0	23.5	6.0	8.0	22.4	30.9	39.0	PF 1/4	24.0	19.5	22.5	73.2	20	
94021233	HR-PL 12G03	12.0	23.5	7.0	8.0	22.4	30.9	40.0	PF 3/8	24.0	19.5	22.5	70.7	20	
94021234	HR-PL 12G04	12.0	23.5	8.5	8.0	22.4	30.9	41.5	PF 1/2	24.0	19.5	22.5	79.9	20	

HR-PT

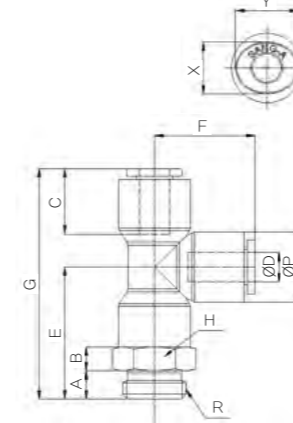
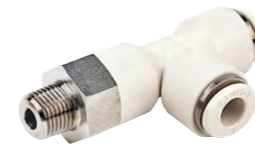
(Male Branch Tee)



CODE	MODEL	ØD	ØP	A	B	C	E	F	G	R	H	X	Y	W.G(g)	Q'ty/inbox
94030402	HR-PT 04M5	4.0	11.9	4.0	8.0	14.9	18.5	26.5	37.0	M5	13.0	8.6	10.8	22.4	50
94030411	HR-PT 0401	4.0	11.9	8.0	8.0	14.9	18.5	30.5	37.0	PT 1/8	13.0	8.6	10.8	25.0	50
94030412	HR-PT 0402	4.0	11.9	11.0	8.0	14.9	18.5	33.5	37.0	PT 1/4	14.0	8.6	10.8	33.4	50
94030602	HR-PT 06M5	6.0	14.9	4.0	8.0	15.7	21.0	29.0	42.0	M5	15.0	11.0	13.0	35.6	40
94030611	HR-PT 0601	6.0	14.9	8.0	8.0	15.7	21.0	33.0	42.0	PT 1/8	15.0	11.0	13.0	37.1	40
94030612	HR-PT 0602	6.0	14.9	11.0	8.0	15.7	21.0	36.0	42.0	PT 1/4	15.0	11.0	13.0	43.8	40
94030811	HR-PT 0801	8.0	16.9	8.0	8.0	17.8	23.6	35.0	47.2	PT 1/8	17.0	13.0	15.0	41.4	40
94030812	HR-PT 0802	8.0	16.9	11.0	8.0	17.8	23.6	38.0	47.2	PT 1/4	17.0	13.0	15.0	47.6	25
94030813	HR-PT 0803	8.0	16.9	12.0	8.0	17.8	23.6	39.0	47.2	PT 3/8	17.0	13.0	15.0	56.3	25
94031012	HR-PT 1002	10.0	19.5	11.0	8.0	19.8	26.4	40.0	52.8	PT 1/4	20.0	16.0	18.5	60.8	20
94031013	HR-PT 1003	10.0	19.5	12.0	8.0	19.8	26.4	41.0	52.8	PT 3/8	20.0	16.0	18.5	69.3	20
94031014	HR-PT 1004	10.0	19.5	15.0	8.0	19.8	26.4	44.0	52.8	PT 1/2	21.0	16.0	18.5	89.7	20
94031212	HR-PT 1202	12.0	23.5	11.0	8.0	22.4	30.9	44.0	61.8	PT 1/4	24.0	19.5	22.5	94.6	15
94031213	HR-PT 1203	12.0	23.5	12.0	8.0	22.4	30.9	45.0	61.8	PT 3/8	24.0	19.5	22.5	94.9	15
94031214	HR-PT 1204	12.0	23.5	15.0	8.0	22.4	30.9	48.0	61.8	PT 1/2	24.0	19.5	22.5	112.4	15

HR-PST

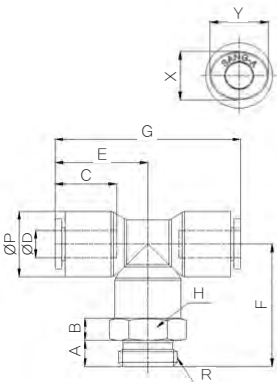
(Male Run Tee)



CODE	MODEL	ØD	ØP	A	B	C	E	F	G	R	H	X	Y	W.G(g)	Q'ty/inbox
94070402	HR-PST 04M5	4.0	11.9	4.0	8.0	14.9	26.5	18.5	45.0	M5	13.0	8.6	10.8	22.4	50
94070411	HR-PST 0401	4.0	11.9	8.0	8.0	14.9	30.5	18.5	49.0	PT 1/8	13.0	8.6	10.8	25.0	50
94070412	HR-PST 0402	4.0	11.9	11.0	8.0	14.9	33.5	18.5	52.0	PT 1/4	14.0	8.6	10.8	33.4	40
94070602	HR-PST 06M5	6.0	14.9	4.0	8.0	15.7	29.0	21.0	50.0	M5	15.0	11.0	13.0	35.6	40
94070611	HR-PST 0601	6.0	14.9	8.0	8.0	15.7	33.0	21.0	54.0	PT 1/8	15.0	11.0	13.0	37.1	40
94070612	HR-PST 0602	6.0	14.9	11.0	8.0	15.7	36.0	21.0	57.0	PT 1/4	15.0	11.0	13.0	43.8	40
94070811	HR-PST 0801	8.0	16.9	8.0	8.0	17.8	35.0	23.6	58.6	PT 1/8	17.0	13.0	15.0	41.4	30
94070812	HR-PST 0802	8.0	16.9	11.0	8.0	17.8	38.0	23.6	61.6	PT 1/4	17.0	13.0	15.0	47.6	25
94070813	HR-PST 0803	8.0	16.9	12.0	8.0	17.8	39.0	23.6	62.6	PT 3/8	17.0	13.0	15.0	56.3	25
94071012	HR-PST 1002	10.0	19.5	11.0	8.0	19.8	40.0	26.4	66.4	PT 1/4	20.0	16.0	18.5	60.8	20
94071013	HR-PST 1003	10.0	19.5	12.0	8.0	19.8	41.0	26.4	67.4	PT 3/8	20.0	16.0	18.5	69.3	20
94071014	HR-PST 1004	10.0	19.5	15.0	8.0	19.8	44.0	26.4	70.4	PT 1/2	21.0	16.0	18.5	89.7	20
94071212	HR-PST 1202	12.0	23.5	11.0	8.0	22.4	44.0	30.9	74.9	PT 1/4	24.0	19.5	22.5	94.6	15
94071213	HR-PST 1203	12.0	23.5	12.0	8.0	22.4	45.0	30.9	75.9	PT 3/8	24.0	19.5	22.5	94.9	15
94071214	HR-PST 1204	12.0	23.5	15.0	8.0	22.4	48.0	30.9	78.9	PT 1/2	24.0	19.5	22.5	112.4	15

HR-PT(G)

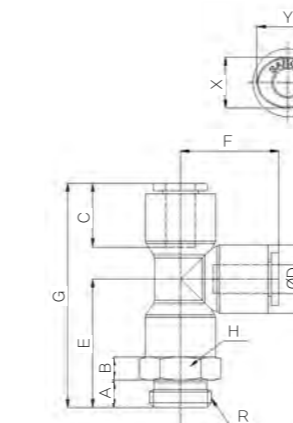
(Male Branch Tee)



CODE	MODEL	ØD	ØP	A	B	C	E	F	G	R	H	X	Y	W.G(g)	Q'ty/inbox
94030431	HR-PT 04G01	4.0	11.9	5.3	8.0	14.9	18.5	27.8	37.0	PF 1/8	13.0	8.6	10.8	22.9	50
94030432	HR-PT 04G02	4.0	11.9	6.0	8.0	14.9	18.5	28.5	37.0	PF 1/4	17.0	8.6	10.8	32.3	50
94030631	HR-PT 06G01	6.0	14.9	5.3	8.0	15.7	21.0	30.3	42.0	PF 1/8	15.0	11.0	13.0	35.1	40
94030632	HR-PT 06G02	6.0	14.9	6.0	8.0	15.7	21.0	31.0	42.0	PF 1/4	17.0	11.0	13.0	41.3	40
94030831	HR-PT 08G01	8.0	16.9	5.3	8.0	17.8	23.6	32.3	47.2	PF 1/8	17.0	13.0	15.0	39.8	40
94030832	HR-PT 08G02	8.0	16.9	6.0	8.0	17.8	23.6	33.0	47.2	PF 1/4	17.0	13.0	15.0	42.5	25
94030833	HR-PT 08G03	8.0	16.9	7.0	8.0	17.8	23.6	34.0	47.2	PF 3/8	20.0	13.0	15.0	53.2	25
94031032	HR-PT 10G02	10.0	19.5	6.0	8.0	19.8	26.4	35.0	52.8	PF 1/4	20.0	16.0	18.5	56.4	20
94031033	HR-PT 10G03	10.0	19.5	7.0	8.0	19.8	26.4	36.0	52.8	PF 3/8	20.0	16.0	18.5	60.9	20
94031034	HR-PT 10G04	10.0	19.5	8.5	8.0	19.8	26.4	37.5	52.8	PF 1/2	24.0	16.0	18.5	80.1	20
94031232	HR-PT 12G02	12.0	23.5	6.0	8.0	22.4	30.9	39.0	61.8	PF 1/4	24.0	19.5	22.5	90.1	15
94031233	HR-PT 12G03	12.0	23.5	7.0	8.0	22.4	30.9	40.0	61.8	PF 3/8	24.0	19.5	22.5	87.6	15
94031234	HR-PT 12G04	12.0	23.5	8.5	8.0	22.4	30.9	41.5	61.8	PF 1/2	24.0	19.5	22.5	96.8	15

HR-PST(G)

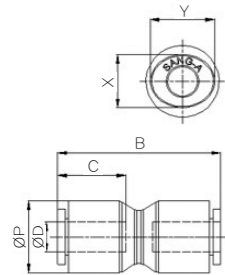
(Male Run Tee)



CODE	MODEL	ØD	ØP	A	B	C	E	F	G	R	H	X	Y	W.G(g)	Q'ty/inbox
94070431	HR-PST 04G01	4.0	11.9	5.3	8.0	14.9	27.8	18.5	46.3	PF 1/8	13.0	8.6	10.8	22.9	50
94070432	HR-PST 04G02	4.0	11.9	6.0	8.0	14.9	28.5	18.5	47.0	PF 1/4	17.0	8.6	10.8	32.3	40
94070631	HR-PST 06G01	6.0	14.9	5.3	8.0	15.7	30.3	21.0	51.3	PF 1/8	15.0	11.0	13.0	35.1	40
94070632	HR-PST 06G02	6.0	14.9	6.0	8.0	15.7	31.0	21.0	52.0	PF 1/4	17.0	11.0	13.0	41.3	40
94070831	HR-PST 08G01	8.0	16.9	5.3	8.0	17.8	32.3	23.6	55.9	PF 1/8	17.0	13.0	15.0	39.8	30
94070832	HR-PST 08G02	8.0	16.9	6.0	8.0	17.8	33.0	23.6	56.6	PF 1/4	17.0	13.0	15.0	42.5	25
94070833	HR-PST 08G03	8.0	16.9	7.0	8.0	17.8	34.0	23.6	57.6	PF 3/8	20.0	13.0	15.0	53.2	25
94071032	HR-PST 10G02	10.0	19.5	6.0	8.0	19.8	35.0	26.4	61.4	PF 1/4	20.0	16.0	18.5	56.4	20
94071033	HR-PST 10G03	10.0	19.5	7.0	8.0	19.8	36.0	26.4	62.4	PF 3/8	20.0	16.0	18.5	60.9	20
94071034	HR-PST 10G04	10.0	19.5	8.5	8.0	19.8	37.5	26.4	63.9	PF 1/2	24.0	16.0	18.5	80.1	20
94071232	HR-PST 12G02	12.0	23.5	6.0	8.0	22.4	39.0	30.9	69.9	PF 1/4	24.0	19.5	22.5	90.1	15
94071233	HR-PST 12G03	12.0	23.5	7.0	8.0	22.4	40.0	30.9	70.9	PF 3/8	24.0	19.5	22.5	87.6	15
94071234	HR-PST 12G04	12.0	23.5	8.5	8.0	22.4	41.5	30.9	72.4	PF 1/2	24.0	19.5	22.5	96.8	15

HR-PUC

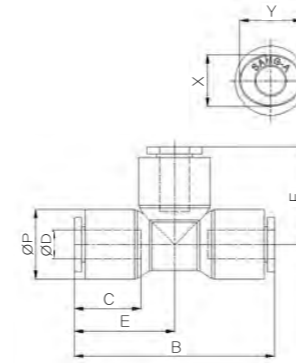
(Union Straight)



CODE	MODEL	ØD	ØP	B	C	X	Y	W.G(g)	Q'ty/ inbox	(mm)
94040400	HR-PUC 04	4.0	11.9	31.0	14.9	8.6	10.8	8.7	50	
94040600	HR-PUC 06	6.0	14.9	33.4	15.7	11.0	13.0	15.1	40	
94040800	HR-PUC 08	8.0	16.9	37.6	17.8	13.0	15.0	16.8	40	
94041000	HR-PUC 10	10.0	19.5	42.3	19.8	16.0	18.5	22.6	25	
94041200	HR-PUC 12	12.0	23.5	48.8	22.4	19.5	22.5	35.8	20	

HR-PUT

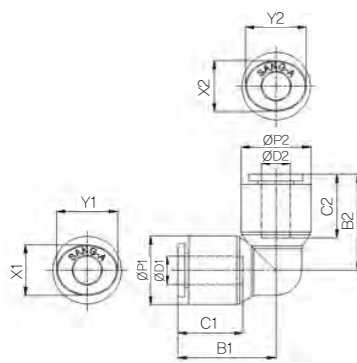
(Union Tee)



CODE	MODEL	ØD	ØP	B	C	E	F	X	Y	W.G(g)	Q'ty/ inbox	(mm)
94060400	HR-PUT 04	4.0	11.9	37.0	14.9	18.5	18.5	8.6	10.8	13.4	50	
94060600	HR-PUT 06	6.0	14.9	42.0	15.7	21.0	21.0	11.0	13.0	23.5	40	
94060800	HR-PUT 08	8.0	16.9	47.2	17.8	23.6	23.6	13.0	15.0	26.3	30	
94061000	HR-PUT 10	10.0	19.5	52.8	19.8	26.4	26.4	16.0	18.5	35.3	20	
94061200	HR-PUT 12	12.0	23.5	61.8	22.4	30.9	30.9	19.5	22.5	55.9	15	

HR-PUL

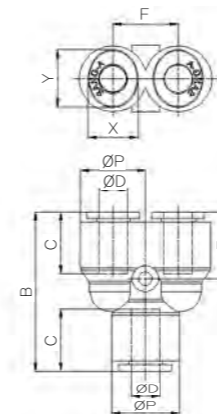
(Union Elbow)



CODE	MODEL	ØD	ØD2	ØP1	ØP2	B1	B2	C1	C2	X1	X2	Y1	Y2	W.G(g)	Q'ty/ inbox	(mm)
94050400	HR-PUL 04	4.0	4.0	11.9	11.9	18.5	18.5	14.9	14.9	8.6	8.6	10.8	10.8	9.5	50	
94050600	HR-PUL 06	6.0	6.0	14.9	14.9	21.0	21.0	15.7	15.7	11.0	11.0	13.0	13.0	16.0	40	
94050800	HR-PUL 08	8.0	8.0	16.9	16.9	23.6	23.6	17.8	17.8	13.0	13.0	15.0	15.0	18.2	40	
94051000	HR-PUL 10	10.0	10.0	19.5	19.5	26.4	26.4	19.8	19.8	16.0	16.0	18.5	18.5	24.5	25	
94051200	HR-PUL 12	12.0	12.0	23.5	23.5	30.9	30.9	22.4	22.4	19.5	19.5	22.5	22.5	39.0	20	
94054300	HR-PUL 0604	6.0	4.0	14.9	11.9	20.5	20.0	15.7	14.9	11.0	8.6	13.0	10.8	12.5	40	
94054500	HR-PUL 0806	8.0	6.0	16.9	14.9	23.6	22.0	17.8	15.7	13.0	11.0	15.0	13.0	16.8	40	
94054700	HR-PUL 1008	10.0	8.0	19.5	16.9	25.9	25.1	19.8	17.8	16.0	13.0	18.5	15.0	21.0	25	
94055000	HR-PUL 1210	12.0	10.0	23.5	19.5	29.9	28.9	22.4	19.8	19.5	16.0	22.5	18.5	31.6	20	

HR-PY

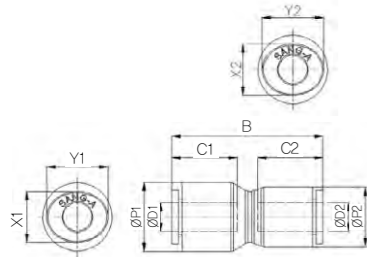
(Union Y)



CODE	MODEL	ØD	ØP	B	C	E	F	X	Y	W.G(g)	Q'ty/ inbox	(mm)
94080400	HR-PY 04	4.0	11.9	32.0	14.9	13.6	11.0	8.6	10.8	13.4	50	
94080600	HR-PY 06	6.0	14.9	36.0	15.7	15.0	13.6	11.0	13.0	23.6	40	
94080800	HR-PY 08	8.0	16.9	44.2	17.8	18.6	15.4	13.0	15.0	27.5	25	
94081000	HR-PY 10	10.0	19.5	46.8	19.8	18.4	18.0	16.0	18.5	36.2	20	
94081200	HR-PY 12	12.0	23.5	53.8	22.4	20.9	21.5	19.5	22.5	56.7	15	

HR-PG

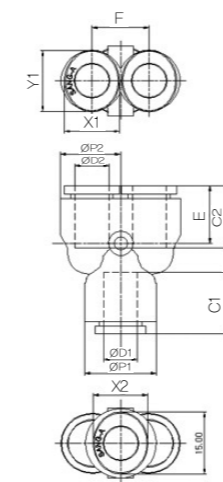
(Reducer)



CODE	MODEL	ØD1	ØD2	ØP1	ØP2	B	C1	C2	X1	X2	Y1	Y2	W.G(g)	Q'ty/ inbox
94314300	HR-PG 0604	6.0	4.0	14.9	11.9	32.0	15.7	14.9	11.0	8.6	13.0	10.8	11.8	40
94314500	HR-PG 0806	8.0	6.0	16.9	14.9	34.5	17.8	15.7	13.0	11.0	15.0	13.0	16.0	40
94314700	HR-PG 1008	10.0	8.0	19.5	16.9	40.0	19.8	17.8	16.0	13.0	18.5	15.0	19.5	25
94315000	HR-PG 1210	12.0	10.0	23.5	19.5	45.3	22.4	19.8	19.5	16.0	22.5	18.5	29.1	20

HR-PW

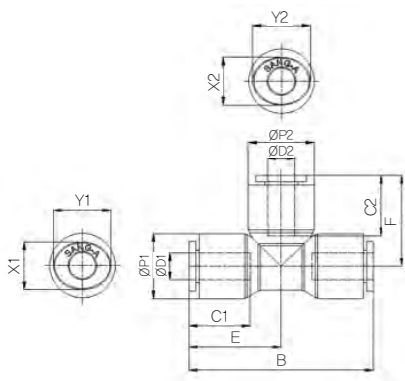
(Reducer Y)



CODE	MODEL	ØD1	ØD2	ØP1	ØP2	B	C1	C2	E	F	X1	X2	Y1	Y2	W.G(g)	Q'ty/ inbox
94114300	HR-PW 0604	6.0	4.0	14.9	11.9	34.0	15.7	14.9	13.6	11.0	11.0	8.6	13.0	10.8	11.1	40
94114500	HR-PW 0806	8.0	6.0	16.9	14.9	38.6	17.8	15.7	15.0	13.6	13.0	11.0	15.0	13.0	18.9	25
94114700	HR-PW 1008	10.0	8.0	19.5	16.9	44.0	19.8	17.8	17.8	15.4	16.0	13.0	18.5	15.0	24.8	20
94115000	HR-PW 1210	12.0	10.0	23.5	19.5	49.3	22.4	19.8	18.4	17.5	19.5	16.0	22.5	18.5	38.9	15

HR-PUG

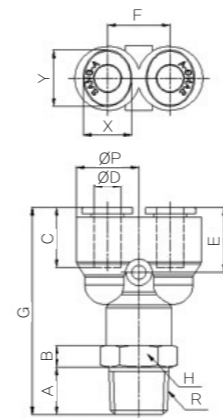
(Different Dia of Union Tee)



CODE	MODEL	ØD1	ØD2	ØP1	ØP2	B	C1	C2	E	F	X1	X2	Y1	Y2	W.G(g)	Q'ty/ inbox
94684300	HR-PUG 0604	6.0	4.0	14.9	11.9	40.0	15.7	14.9	20.0	20.0	11.0	8.6	13.0	10.8	20.1	40
94684500	HR-PUG 0806	8.0	6.0	16.9	14.9	47.2	17.8	15.7	23.6	22.0	13.0	11.0	15.0	13.0	25.6	30
94684700	HR-PUG 1008	10.0	8.0	19.5	16.9	52.8	19.8	17.8	26.4	25.6	16.0	13.0	18.5	15.0	32.5	20
94685000	HR-PUG 1210	12.0	10.0	23.5	19.5	61.8	22.4	19.8	30.9	28.4	19.5	16.0	22.5	18.5	49.3	15

HR-PWT

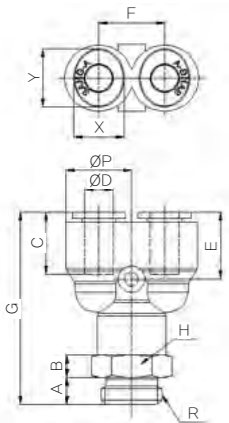
(Male Y)



CODE	MODEL	ØD	ØP	A	B	C	E	F	G	R	H	X	Y	W.G(g)	Q'ty/ inbox
94090402	HR-PWT 04M5	4.0	11.9	4.0	8.0	14.9	13.6	11.0	40.0	M5	13.0	8.6	10.8	22.4	50
94090411	HR-PWT 0401	4.0	11.9	8.0	8.0	14.9	13.6	11.0	44.0	PT 1/8	13.0	8.6	10.8	25.1	50
94090412	HR-PWT 0402	4.0	11.9	11.0	8.0	14.9	13.6	11.0	47.0	PT 1/4	14.0	8.6	10.8	33.4	50
94090602	HR-PWT 06M5	6.0	14.9	4.0	8.0	15.7	15.0	13.6	44.0	M5	15.0	11.0	13.0	35.7	50
94090611	HR-PWT 0601	6.0	14.9	8.0	8.0	15.7	15.0	13.6	48.0	PT 1/8	15.0	11.0	13.0	37.2	50
94090612	HR-PWT 0602	6.0	14.9	11.0	8.0	15.7	15.0	13.6	51.0	PT 1/4	15.0	11.0	13.0	43.9	50
94090811	HR-PWT 0801	8.0	16.9	8.0	8.0	17.8	18.6	15.4	55.6	PT 1/8	17.0	13.0	15.0	42.6	50
94090812	HR-PWT 0802	8.0	16.9	11.0	8.0	17.8	18.6	15.4	58.6	PT 1/4	17.0	13.0	15.0	48.9	50
94090813	HR-PWT 0803	8.0	16.9	12.0	8.0	17.8	18.6	15.4	59.6	PT 3/8	17.0	13.0	15.0	57.5	25
94091012	HR-PWT 1002	10.0	19.5	11.0	8.0	19.8	18.4	18.0	60.4	PT 1/4	20.0	16.0	18.5	61.7	25
94091013	HR-PWT 1003	10.0	19.5	12.0	8.0	19.8	18.4	18.0	61.4	PT 3/8	20.0	16.0	18.5	70.2	25
94091014	HR-PWT 1004	10.0	19.5	15.0	8.0	19.8	18.4	18.0	64.4	PT 1/2	21.0	16.0	18.5	90.6	25
94091212	HR-PWT 1202	12.0	23.5	11.0	8.0	22.4	20.9	21.5	66.9	PT 1/4	24.0	19.5	22.5	95.5	20
94091213	HR-PWT 1203	12.0	23.5	12.0	8.0	22.4	20.9	21.5	67.9	PT 3/8	24.0	19.5	22.5	95.7	20
94091214	HR-PWT 1204	12.0	23.5	15.0	8.0	22.4	20.9	21.5	70.9	PT 1/2	24.0	19.5	22.5	113.2	20

HR-PWT(G)

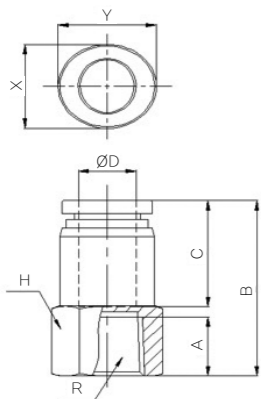
(Male Y)



CODE	MODEL	ØD	ØP	A	B	C	E	F	G	R	H	X	Y	W.G(g)	Q'ty/ inbox
94090431	HR-PWT 04G01	4.0	11.9	5.3	8.0	14.9	13.6	11.0	41.3	PF 1/8	13.0	8.6	10.8	22.9	50
94090432	HR-PWT 04G02	4.0	11.9	6.0	8.0	14.9	13.6	11.0	42.0	PF 1/4	17.0	8.6	10.8	32.3	50
94090631	HR-PWT 06G01	6.0	14.9	5.3	8.0	15.7	15.0	13.6	45.3	PF 1/8	15.0	11.0	13.0	35.2	50
94090632	HR-PWT 06G02	6.0	14.9	6.0	8.0	15.7	15.0	13.6	46.0	PF 1/4	17.0	11.0	13.0	41.4	50
94090831	HR-PWT 08G01	8.0	16.9	5.3	8.0	17.8	18.6	15.4	52.9	PF 1/8	17.0	13.0	15.0	41.0	50
94090832	HR-PWT 08G02	8.0	16.9	6.0	8.0	17.8	18.6	15.4	53.6	PF 1/4	17.0	13.0	15.0	43.7	50
94090833	HR-PWT 08G03	8.0	16.9	7.0	8.0	17.8	18.6	15.4	54.6	PF 3/8	20.0	13.0	15.0	54.5	25
94091032	HR-PWT 10G02	10.0	19.5	6.0	8.0	19.8	18.4	18.0	55.4	PF 1/4	20.0	16.0	18.5	57.3	25
94091033	HR-PWT 10G03	10.0	19.5	7.0	8.0	19.8	18.4	18.0	56.4	PF 3/8	20.0	16.0	18.5	61.8	25
94091034	HR-PWT 10G04	10.0	19.5	8.5	8.0	19.8	18.4	18.0	57.9	PF 1/2	24.0	16.0	18.5	81.0	25
94091232	HR-PWT 12G02	12.0	23.5	6.0	8.0	22.4	20.9	21.5	61.9	PF 1/4	24.0	19.5	22.5	91.0	20
94091233	HR-PWT 12G03	12.0	23.5	7.0	8.0	22.4	20.9	21.5	62.9	PF 3/8	24.0	19.5	22.5	88.5	20
94091234	HR-PWT 12G04	12.0	23.5	8.5	8.0	22.4	20.9	21.5	64.4	PF 1/2	24.0	19.5	22.5	97.6	20

HR-PCF(R)

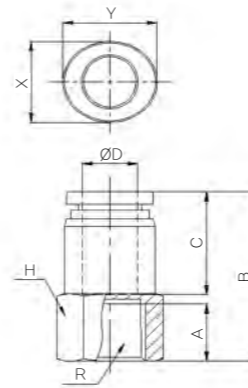
(Female Straight)



CODE	MODEL	ØD	A	B	C	H	R	X	Y	W.G(g)	Q'ty/ inbox
94230421	HR-PCF 0401	4.0	9.0	24.8	14.9	13.0	PT1/8	8.6	10.8	14.1	50
94230621	HR-PCF 0601	6.0	9.0	25.8	15.7	13.0	PT1/8	11.0	13.0	18.3	40
94230622	HR-PCF 0602	6.0	12.0	28.8	15.7	17.0	PT1/4	11.0	13.0	27.9	40
94230821	HR-PCF 0801	8.0	9.0	27.7	17.8	14.0	PT1/8	13.0	15.0	20.2	40
94230822	HR-PCF 0802	8.0	12.0	30.7	17.8	17.0	PT1/4	13.0	15.0	27.9	40
94231022	HR-PCF 1002	10.0	12.0	32.7	19.8	17.0	PT1/4	16.0	18.5	32.6	40
94231023	HR-PCF 1003	10.0	13.0	33.7	19.8	19.0	PT3/8	16.0	18.5	34.2	20
94231223	HR-PCF 1203	12.0	13.0	36.3	22.4	20.0	PT3/8	19.5	22.5	46.5	20
94231224	HR-PCF 1204	12.0	16.0	39.3	22.4	24.0	PT1/2	19.5	22.5	60.7	20

HR-PCF(G)

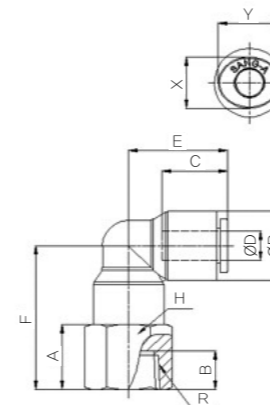
(Female Straight)



CODE	MODEL	ØD	A	B	C	H	R	X	Y	W.G(g)	Q'ty/ inbox
94230441	HR-PCF 04G01	4.0	9.0	24.8	14.9	13.0	PF1/8	8.6	10.8	13.8	50
94230641	HR-PCF 06G01	6.0	9.0	25.8	15.7	13.0	PF1/8	11.0	13.0	18.0	40
94230642	HR-PCF 06G02	6.0	12.0	28.8	15.7	17.0	PF1/4	11.0	13.0	27.3	40
94230841	HR-PCF 08G01	8.0	9.0	27.7	17.8	14.0	PF1/8	13.0	15.0	19.9	40
94230842	HR-PCF 08G02	8.0	12.0	30.7	17.8	17.0	PF1/4	13.0	15.0	27.3	40
94231042	HR-PCF 10G02	10.0	12.0	32.7	19.8	17.0	PF1/4	16.0	18.5	32.0	40
94231043	HR-PCF 10G03	10.0	13.0	33.7	19.8	19.0	PF3/8	16.0	18.5	33.2	20
94231243	HR-PCF 12G03	12.0	13.0	36.3	22.4	20.0	PF3/8	19.5	22.5	45.6	20
94231244	HR-PCF 12G04	12.0	16.0	39.3	22.4	24.0	PF1/2	19.5	22.5	58.8	20

HR-PLF

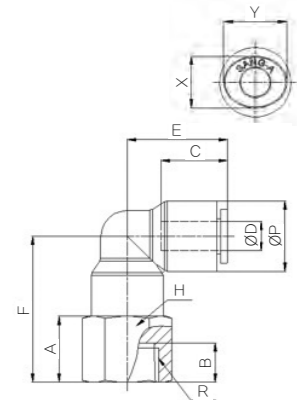
(Female Elbow)



CODE	MODEL	ØD	ØP	A	B	C	E	F	R	H	X	Y	W.G(g)	Q'ty/ inbox
94300402	HR-PLF 04M5	4.0	11.9	8.0	5.0	14.9	18.5	22.5	M5	13.0	8.6	10.8	16.5	50
94300411	HR-PLF 0401	4.0	11.9	11.0	9.0	14.9	18.5	25.5	PT 1/8	13.0	8.6	10.8	16.9	50
94300412	HR-PLF 0402	4.0	11.9	14.0	12.0	14.9	18.5	28.5	PT 1/4	16.0	8.6	10.8	23.4	50
94300602	HR-PLF 06M5	6.0	14.9	8.0	5.0	15.7	21.0	25.0	M5	15.0	11.0	13.0	25.5	50
94300611	HR-PLF 0601	6.0	14.9	11.0	9.0	15.7	21.0	28.0	PT 1/8	15.0	11.0	13.0	27.1	40
94300612	HR-PLF 0602	6.0	14.9	14.0	12.0	15.7	21.0	31.0	PT 1/4	16.0	11.0	13.0	29.4	40
94300811	HR-PLF 0801	8.0	16.9	10.0	9.0	17.8	23.6	29.0	PT 1/8	17.0	13.0	15.0	32.6	40
94300812	HR-PLF 0802	8.0	16.9	14.0	12.0	17.8	23.6	33.0	PT 1/4	17.0	13.0	15.0	34.9	40
94300813	HR-PLF 0803	8.0	16.9	15.0	13.0	17.8	23.6	34.0	PT 3/8	19.0	13.0	15.0	36.3	25
94301012	HR-PLF 1002	10.0	19.5	14.0	12.0	19.8	26.4	35.0	PT 1/4	20.0	16.0	18.5	52.4	25
94301013	HR-PLF 1003	10.0	19.5	15.0	13.0	19.8	26.4	36.0	PT 3/8	20.0	16.0	18.5	47.2	20
94301014	HR-PLF 1004	10.0	19.5	19.0	16.0	19.8	26.4	40.0	PT 1/2	24.0	16.0	18.5	65.0	20
94301212	HR-PLF 1202	12.0	23.5	14.0	12.0	22.4	30.9	39.0	PT 1/4	24.0	19.5	22.5	83.2	20
94301213	HR-PLF 1203	12.0	23.5	15.0	13.0	22.4	30.9	40.0	PT 3/8	24.0	19.5	22.5	79.1	20
94301214	HR-PLF 1204	12.0	23.5	19.0	16.0	22.4	30.9	44.0	PT 1/2	24.0	19.5	22.5	78.7	20

HR-PLF(G)

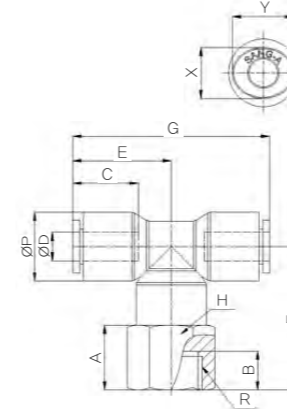
(Female Elbow)



CODE	MODEL	ØD	ØP	A	B	C	E	F	R	H	X	Y	W.G(g)	Q'ty/ inbox	(mm)
94300431	HR-PLF 04G01	4.0	11.9	10.0	9.0	14.9	18.5	24.5	PF 1/8	13.0	8.6	10.8	15.6	50	
94300432	HR-PLF 04G02	4.0	11.9	14.0	12.0	14.9	18.5	28.5	PF 1/4	16.0	8.6	10.8	23.6	50	
94300631	HR-PLF 06G01	6.0	14.9	10.0	9.0	15.7	21.0	27.0	PF 1/8	15.0	11.0	13.0	25.4	40	
94300632	HR-PLF 06G02	6.0	14.9	14.0	12.0	15.7	21.0	31.0	PF 1/4	16.0	11.0	13.0	29.4	40	
94300831	HR-PLF 08G01	8.0	16.9	10.0	9.0	17.8	23.6	29.0	PF 1/8	17.0	13.0	15.0	32.3	40	
94300832	HR-PLF 08G02	8.0	16.9	14.0	12.0	17.8	23.6	33.0	PF 1/4	17.0	13.0	15.0	34.3	40	
94300833	HR-PLF 08G03	8.0	16.9	15.0	13.0	17.8	23.6	34.0	PF 3/8	19.0	13.0	15.0	41.9	25	
94301032	HR-PLF 10G02	10.0	19.5	14.0	12.0	19.8	26.4	35.0	PF 1/4	20.0	16.0	18.5	51.8	25	
94301033	HR-PLF 10G03	10.0	19.5	15.0	13.0	19.8	26.4	36.0	PF 3/8	20.0	16.0	18.5	46.6	20	
94301034	HR-PLF 10G04	10.0	19.5	19.0	16.0	19.8	26.4	40.0	PF 1/2	24.0	16.0	18.5	63.3	20	
94301232	HR-PLF 12G02	12.0	23.5	14.0	12.0	22.4	30.9	39.0	PF 1/4	24.0	19.5	22.5	82.6	20	
94301233	HR-PLF 12G03	12.0	23.5	15.0	13.0	22.4	30.9	40.0	PF 3/8	24.0	19.5	22.5	78.3	20	
94301234	HR-PLF 12G04	12.0	23.5	19.0	16.0	22.4	30.9	44.0	PF 1/2	24.0	19.5	22.5	81.7	20	

HR-PTF(G)

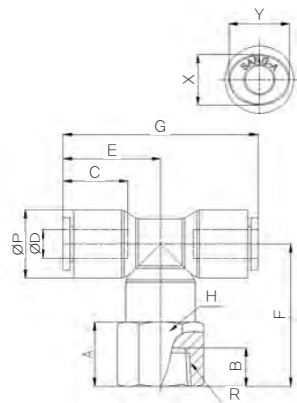
(Female Branch Tee)



CODE	MODEL	ØD	ØP	A	B	C	E	F	G	R	H	X	Y	W.G(g)	Q'ty/ inbox	(mm)
94390441	HR-PTF 04G01	4.0	11.9	10.0	9.0	14.9	18.5	24.5	37.0	PF 1/8	13.0	8.6	10.8	19.5	50	
94390442	HR-PTF 04G02	4.0	11.9	14.0	12.0	14.9	18.5	28.5	37.0	PF 1/4	16.0	8.6	10.8	27.5	50	
94390641	HR-PTF 06G01	6.0	14.9	10.0	9.0	15.7	21.0	27.0	42.0	PF 1/8	15.0	11.0	13.0	32.9	40	
94390642	HR-PTF 06G02	6.0	14.9	14.0	12.0	15.7	21.0	31.0	42.0	PF 1/4	16.0	11.0	13.0	36.9	40	
94390841	HR-PTF 08G01	8.0	16.9	10.0	9.0	17.8	23.6	29.0	47.2	PF 1/8	17.0	13.0	15.0	40.4	40	
94390842	HR-PTF 08G02	8.0	16.9	14.0	12.0	17.8	23.6	33.0	47.2	PF 1/4	17.0	13.0	15.0	42.4	25	
94390843	HR-PTF 08G03	8.0	16.9	15.0	13.0	17.8	23.6	34.0	47.2	PF 3/8	19.0	13.0	15.0	50.1	25	
94391032	HR-PTF 10G02	10.0	19.5	14.0	12.0	19.8	26.4	35.0	52.8	PF 1/4	20.0	16.0	18.5	62.7	20	
94391033	HR-PTF 10G03	10.0	19.5	15.0	13.0	19.8	26.4	36.0	52.8	PF 3/8	20.0	16.0	18.5	57.4	20	
94391034	HR-PTF 10G04	10.0	19.5	19.0	16.0	19.8	26.4	40.0	52.8	PF 1/2	24.0	16.0	18.5	74.1	20	
94391232	HR-PTF 12G02	12.0	23.5	14.0	12.0	22.4	30.9	39.0	61.8	PF 1/4	24.0	19.5	22.5	99.5	15	
94391233	HR-PTF 12G03	12.0	23.5	15.0	13.0	22.4	30.9	40.0	61.8	PF 3/8	24.0	19.5	22.5	95.2	15	
94391234	HR-PTF 12G04	12.0	23.5	19.0	16.0	22.4	30.9	44.0	61.8	PF 1/2	24.0	19.5	22.5	98.6	15	

HR-PTF

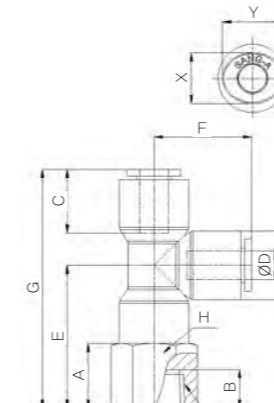
(Female Branch Tee)



CODE	MODEL	ØD	ØP	A	B	C	E	F	G	R	H	X	Y	W.G(g)	Q'ty/ inbox	(mm)
94390402	HR-PTF 04M5	4.0	11.9	8.0	5.0	14.9	18.5	22.5	37.0	M5	13.0	8.6	10.8	20.3	50	
94390421	HR-PTF 0401	4.0	11.9	11.0	9.0	14.9	18.5	25.5	37.0	PT 1/8	13.0	8.6	10.8	20.8	50	
94390422	HR-PTF 0402	4.0	11.9	14.0	12.0	14.9	18.5	28.5	37.0	PT 1/4	16.0	8.6	10.8	27.3	50	
94390602	HR-PTF 06M5	6.0	14.9	8.0	5.0	15.7	21.0	25.0	42.0	M5	15.0	11.0	13.0	33.0	40	
94390621	HR-PTF 0601	6.0	14.9	11.0	9.0	15.7	21.0	28.0	42.0	PT 1/8	15.0	11.0	13.0	34.6	40	
94390622	HR-PTF 0602	6.0	14.9	14.0	12.0	15.7	21.0	31.0	42.0	PT 1/4	16.0	11.0	13.0	36.9	40	
94390821	HR-PTF 0801	8.0	16.9	10.0	9.0	17.8	23.6	29.0	47.2	PT 1/8	17.0	13.0	15.0	40.7	40	
94390822	HR-PTF 0802	8.0	16.9	14.0	12.0	17.8	23.6	33.0	47.2	PT 1/4	17.0	13.0	15.0	43.1	25	
94390823	HR-PTF 0803	8.0	16.9	15.0	13.0	17.8	23.6	34.0	47.2	PT 3/8	19.0	13.0	15.0	44.5	25	
94391012	HR-PTF 1002	10.0	19.5	14.0	12.0	19.8	26.4	35.0	52.8	PT 1/4	20.0	16.0	18.5	63.2	20	
94391013	HR-PTF 1003	10.0	19.5	15.0	13.0	19.8	26.4	36.0	52.8	PT 3/8	20.0	16.0	18.5	58.0	20	
94391014	HR-PTF 1004	10.0	19.5	19.0	16.0	19.8	26.4	40.0	52.8	PT 1/2	24.0	16.0	18.5	75.9	20	
94391212	HR-PTF 1202	12.0	23.5	14.0	12.0	22.4	30.9	39.0	61.8	PT 1/4	24.0	19.5	22.5	100.1	15	
94391213	HR-PTF 1203	12.0	23.5	15.0	13.0	22.4	30.9	40.0	61.8	PT 3/8	24.0	19.5	22.5	96.1	15	
94391214	HR-PTF 1204	12.0	23.5	19.0	16.0	22.4	30.9	44.0	61.8	PT 1/2	24.0	19.5	22.5	95.6	15	

HR-PSTF

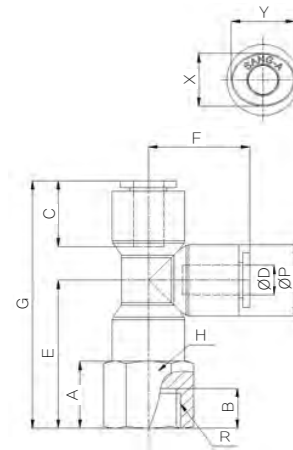
(Female Run Tee)



CODE	MODEL	ØD	ØP	A	B	C	E	F	G	R	H	X	Y	W.G(g)	Q'ty/ inbox	(mm)
94820402	HR-PSTF 04M5	4.0	11.9	8.0	5.0	14.9	22.5	18.5	41.0	M5	13.0	8.6	10.8	20.3	50	
94820421	HR-PSTF 0401	4.0	11.9	11.0	9.0	14.9	25.5	18.5	44.0	PT 1/8	13.0	8.6	10.8	20.8	50	
94820422	HR-PSTF 0402	4.0	11.9	14.0	12.0	14.9	28.5	18.5	47.0	PT 1/4	16.0	8.6	10.8	27.3	50	
94820602	HR-PSTF 06M5	6.0	14.9	8.0	5.0	15.7	25.0	21.0	46.0	M5	15.0	11.0	13.0	33.0	40	
94820621	HR-PSTF 0601	6.0	14.9	11.0	9.0	15.7	28.0	21.0	49.0	PT 1/8	15.0	11.0	13.0	34.6	40	
94820622	HR-PSTF 0602	6.0	14.9	14.0	12.0	15.7	31.0	21.0	52.0	PT 1/4	16.0	11.0	13.0	36.9	40	
94820821	HR-PSTF 0801	8.0	16.9	10.0	9.0	17.8	29.0	23.6	52.6	PT 1/8	17.0	13.0	15.0	40.7	40	
94820822	HR-PSTF 0802	8.0	16.9	14.0	12.0	17.8	33.0	23.6	56.6	PT 1/4	17.0	13.0	15.0	43.1	25	
94820823	HR-PSTF 0803	8.0	16.9	15.0	13.0	17.8	34.0	23.6	57.6	PT 3/8	19.0	13.0	15.0	44.5	25	
94821012	HR-PSTF 1002	10.0	19.5	14.0	12.0	19.8	35.0	26.4	61.4	PT 1/4	20.0	16.0	18.5	63.2	20	
94821013	HR-PSTF 1003	10.0	19.5	15.0	13.0	19.8	36.0	26.4	62.4	PT 3/8	20.0	16.0	18.5	58.0	20	
94821014	HR-PSTF 1004	10.0	19.5	19.0	16.0	19.8	40.0	26.4	66.4	PT 1/2	24.0	16.0	18.5	75.9	20	
94821212	HR-PSTF 1202	12.0	23.5	14.0	12.0	22.4	39.0	30.9	69.9	PT 1/4	24.0	19.5	22.5	100.1	15	
94821213	HR-PSTF 1203	12.0	23.5	15.0	13.0	22.4	40.0	30.9	70.9	PT 3/8	24.0	19.5	22.5	96.1	15	
94821214	HR-PSTF 1204	12.0	23.5	19.0	16.0	22.4	44.0	30.9	74.9	PT 1/2	24.0	19.5	22.5	95.6	15	

HR-PSTF(G)

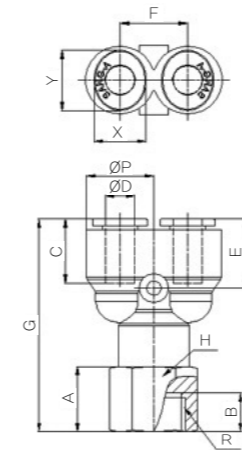
(Female Run Tee)



CODE	MODEL	ØD	ØP	A	B	C	E	F	G	R	H	X	Y	W.G(g)	Q'ty/ inbox	(mm)
94820441	HR-PSTF 04G01	4.0	11.9	10.0	9.0	14.9	24.5	18.5	43.0	PF 1/8	13.0	8.6	10.8	19.5	50	
94820442	HR-PSTF 04G02	4.0	11.9	14.0	12.0	14.9	28.5	18.5	47.0	PF 1/4	16.0	8.6	10.8	27.5	50	
94820641	HR-PSTF 06G01	6.0	14.9	10.0	9.0	15.7	27.0	21.0	48.0	PF 1/8	15.0	11.0	13.0	32.9	40	
94820642	HR-PSTF 06G02	6.0	14.9	14.0	12.0	15.7	31.0	21.0	52.0	PF 1/4	16.0	11.0	13.0	36.9	40	
94820841	HR-PSTF 08G01	8.0	16.9	10.0	9.0	17.8	29.0	23.6	52.6	PF 1/8	17.0	13.0	15.0	40.4	40	
94820842	HR-PSTF 08G02	8.0	16.9	14.0	12.0	17.8	33.0	23.6	56.6	PF 1/4	17.0	13.0	15.0	42.4	25	
94820843	HR-PSTF 08G03	8.0	16.9	15.0	13.0	17.8	34.0	23.6	57.6	PF 3/8	19.0	13.0	15.0	50.1	25	
94821032	HR-PSTF 10G02	10.0	19.5	14.0	12.0	19.8	35.0	26.4	61.4	PF 1/4	20.0	16.0	18.5	62.7	20	
94821033	HR-PSTF 10G03	10.0	19.5	15.0	13.0	19.8	36.0	26.4	62.4	PF 3/8	20.0	16.0	18.5	57.4	20	
94821034	HR-PSTF 10G04	10.0	19.5	19.0	16.0	19.8	40.0	26.4	66.4	PF 1/2	24.0	16.0	18.5	74.1	20	
94821232	HR-PSTF 12G02	12.0	23.5	14.0	12.0	22.4	39.0	30.9	69.9	PF 1/4	24.0	19.5	22.5	99.5	15	
94821233	HR-PSTF 12G03	12.0	23.5	15.0	13.0	22.4	40.0	30.9	70.9	PF 3/8	24.0	19.5	22.5	95.2	15	
94821234	HR-PSTF 12G04	12.0	23.5	19.0	16.0	22.4	44.0	30.9	74.9	PF 1/2	24.0	19.5	22.5	98.6	15	

HR-PWF(G)

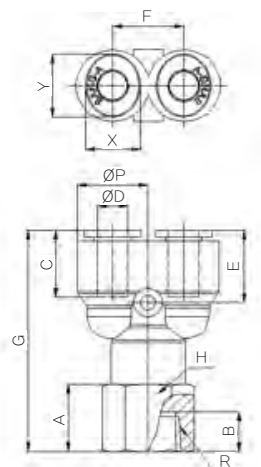
(Female Y)



CODE	MODEL	ØD	ØP	A	B	C	E	F	G	R	H	X	Y	W.G(g)	Q'ty/ inbox	(mm)
94830441	HR-PWF 04G01	4.0	11.9	10.0	9.0	14.9	13.6	11.0	38.0	PF 1/8	13.0	8.6	10.8	19.5	50	
94830442	HR-PWF 04G02	4.0	11.9	14.0	12.0	14.9	13.6	11.0	42.0	PF 1/4	16.0	8.6	10.8	27.5	50	
94830641	HR-PWF 06G01	6.0	14.9	10.0	9.0	15.7	15.0	13.6	42.0	PF 1/8	15.0	11.0	13.0	33.0	50	
94830642	HR-PWF 06G02	6.0	14.9	14.0	12.0	15.7	15.0	13.6	46.0	PF 1/4	16.0	11.0	13.0	37.0	50	
94830841	HR-PWF 08G01	8.0	16.9	10.0	9.0	17.8	18.6	15.4	49.6	PF 1/8	17.0	13.0	15.0	41.7	50	
94830842	HR-PWF 08G02	8.0	16.9	14.0	12.0	17.8	18.6	15.4	53.6	PF 1/4	17.0	13.0	15.0	43.7	50	
94830843	HR-PWF 08G03	8.0	16.9	15.0	13.0	17.8	18.6	15.4	54.6	PF 3/8	19.0	13.0	15.0	51.3	25	
94831042	HR-PWF 10G02	10.0	19.5	14.0	12.0	19.8	18.4	18.0	55.4	PF 1/4	20.0	16.0	18.5	63.5	25	
94831043	HR-PWF 10G03	10.0	19.5	15.0	13.0	19.8	18.4	18.0	56.4	PF 3/8	20.0	16.0	18.5	58.3	25	
94831044	HR-PWF 10G04	10.0	19.5	19.0	16.0	19.8	18.4	18.0	60.4	PF 1/2	24.0	16.0	18.5	75.0	25	
94831242	HR-PWF 12G02	12.0	23.5	14.0	12.0	22.4	20.9	21.5	61.9	PF 1/4	24.0	19.5	22.5	100.4	20	
94831243	HR-PWF 12G03	12.0	23.5	15.0	13.0	22.4	20.9	21.5	62.9	PF 3/8	24.0	19.5	22.5	96.0	20	
94831244	HR-PWF 12G04	12.0	23.5	19.0	16.0	22.4	20.9	21.5	66.9	PF 1/2	24.0	19.5	22.5	99.5	20	

HR-PWF

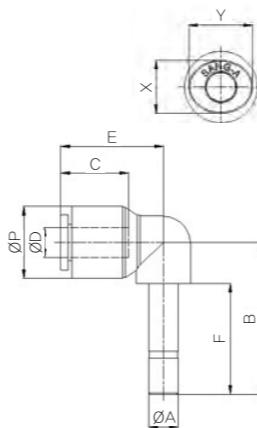
(Female Y)



CODE	MODEL	ØD	ØP	A	B	C	E	F	G	R	H	X	Y	W.G(g)	Q'ty/ inbox	(mm)
94830402	HR-PWF 04M5	4.0	11.9	8.0	5.0	14.9	13.6	11.0	36.0	M5	13.0	8.6	10.8	20.4	50	
94830421	HR-PWF 0401	4.0	11.9	11.0	9.0	14.9	13.6	11.0	39.0	PT 1/8	13.0	8.6	10.8	20.8	50	
94830422	HR-PWF 0402	4.0	11.9	14.0	12.0	14.9	13.6	11.0	42.0	PT 1/4	16.0	8.6	10.8	27.3	50	
94830602	HR-PWF 06M5	6.0	14.9	8.0	5.0	15.7	15.0	13.6	40.0	M5	15.0	11.0	13.0	33.0	50	
94830621	HR-PWF 0601	6.0	14.9	11.0	9.0	15.7	15.0	13.6	43.0	PT 1/8	15.0	11.0	13.0	34.7	50	
94830622	HR-PWF 0602	6.0	14.9	14.0	12.0	15.7	15.0	13.6	46.0	PT 1/4	16.0	11.0	13.0	37.0	50	
94830821	HR-PWF 0801	8.0	16.9	10.0	9.0	17.8	18.6	15.4	49.6	PT 1/8	17.0	13.0	15.0	41.9	50	
94830822	HR-PWF 0802	8.0	16.9	14.0	12.0	17.8	18.6	15.4	53.6	PT 1/4	17.0	13.0	15.0	44.3	50	
94830823	HR-PWF 0803	8.0	16.9	15.0	13.0	17.8	18.6	15.4	54.6	PT 3/8	19.0	13.0	15.0	45.7	25	
94831022	HR-PWF 1002	10.0	19.5	14.0	12.0	19.8	18.4	18.0	55.4	PT 1/4	20.0	16.0	18.5	64.1	25	
94831023	HR-PWF 1003	10.0	19.5	15.0	13.0	19.8	18.4	18.0	56.4	PT 3/8	20.0	16.0	18.5	58.9	25	
94831024	HR-PWF 1004	10.0	19.5	19.0	16.0	19.8	18.4	18.0	60.4	PT 1/2	24.0	16.0	18.5	76.7	25	
94831222	HR-PWF 1202	12.0	23.5	14.0	12.0	22.4	20.9	21.5	61.9	PT 1/4	24.0	19.5	22.5	100.9	20	
94831223	HR-PWF 1203	12.0	23.5	15.0	13.0	22.4	20.9	21.5	62.9	PT 3/8	24.0	19.5	22.5	96.9	20	
94831224	HR-PWF 1204	12.0	23.5	19.0	16.0	22.4	20.9	21.5	66.9	PT 1/2	24.0	19.5	22.5	96.4	20	

HR-PLJ

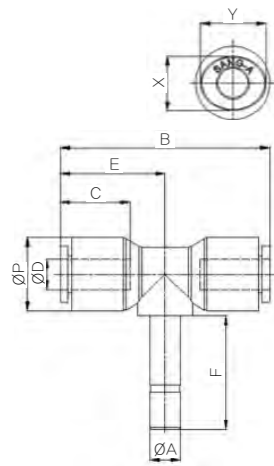
(Plug-in Elbow)



CODE	MODEL	ØD	ØP	ØA	B	C	E	F	X	Y	W.G(g)	Q'ty/ inbox	(mm)
94140400	HR-PLJ 04	4.0	11.9	4.0	24.0	14.9	18.5	17.5	8.6	10.8	5.1	100	
94140600	HR-PLJ 06	6.0	14.9	6.0	31.5	15.7	21.0	23.0	11.0	13.0	9.3	50	
94140800	HR-PLJ 08	8.0	16.9	8.0	34.5	17.8	23.6	25.0	13.0	15.0	11.0	50	
94141000	HR-PLJ 10	10.0	19.5	10.0	38.0	19.8	26.4	27.0	16.0	18.5	15.7	25	
94141200	HR-PLJ 12	12.0	23.5	12.0	41.8	22.4	30.9	29.0	19.5	22.5	23.5	25	

HR-PTJ

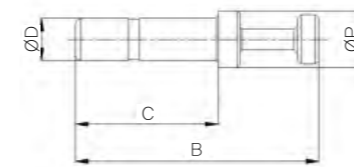
(Plug-in Tee)



CODE	MODEL	ØD	ØP	ØA	B	C	E	F	X	Y	W.G(g)	Q'ty/ inbox
94790400	HR-PTJ 04	4.0	11.9	4.0	37.0	14.9	18.5	17.5	8.6	10.8	9.4	50
94790600	HR-PTJ 06	6.0	14.9	6.0	42.0	15.7	21.0	23.0	11.0	13.0	16.9	25
94790800	HR-PTJ 08	8.0	16.9	8.0	47.2	17.8	23.6	25.0	13.0	15.0	19.2	25
94791100	HR-PTJ 10	10.0	19.5	10.0	52.8	19.8	26.4	27.0	16.0	18.5	26.7	16
94791200	HR-PTJ 12	12.0	23.5	12.0	61.8	22.4	30.9	29.0	19.5	22.5	41.2	16

HR-PP

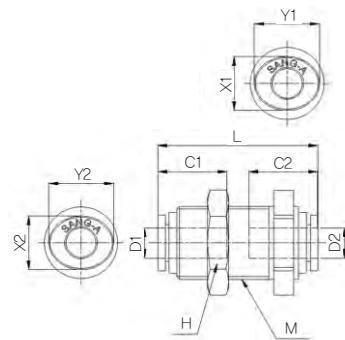
(Plug)



CODE	MODEL	ØD	ØP	B	C	W.G(g)	Q'ty/ inbox
94340400	HR-PP 04	4.0	6.0	28.5	17.5	0.5	100
94340600	HR-PP 06	6.0	8.0	34.0	20.0	0.9	100
94340800	HR-PP 08	8.0	10.0	41.0	22.0	1.6	100
94341000	HR-PP 10	10.0	12.0	40.9	25.0	2.2	50
94341200	HR-PP 12	12.0	14.0	43.0	27.0	3.4	50

HR-PPM

(Bulkhead Union P)



CODE	MODEL	ØD1	ØD2	L	C1	C2	H	M	X1	X2	Y1	Y2	W.G(g)	Q'ty/ inbox
94550400	HR-PPM 04	4.0	4.0	30.8	14.9	14.9	17.0	M12X1	8.6	8.6	10.8	10.8	14.2	100
94550600	HR-PPM 06	6.0	6.0	32.4	15.7	15.7	19.0	M15X1	11.0	11.0	13.0	13.0	20.8	50
94550800	HR-PPM 08	8.0	8.0	36.6	17.8	17.8	22.0	M17X1	13.0	13.0	15.0	15.0	25.0	50
94551000	HR-PPM 10	10.0	10.0	40.8	19.8	19.8	27.0	M20X1	16.0	16.0	18.5	18.5	37.6	20
94551200	HR-PPM 12	12.0	12.0	46.8	22.4	22.4	30.0	M24X1	19.5	19.5	22.5	22.5	55.7	20