




VALVOLE A LEVA A 90° IN ACCIAIO INOX

STAINLESS STEEL AISI 316 L 90° LEVER VALVE
 HEBEL VENTILE 90° AUS EDELSTAHL AISI 316 L
 DISTRIBUTEURS À LEVIER EN ACIER INOX AISI 316 L
 VÁLVULAS DE PALANCA EN ACERO INOX AISI 316 L
 VÁLVULA DE ALAVANCA A 90° EM AÇO INOXIDÁVEL AISI 316 L

AISI 316L

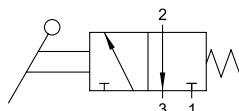
		1/4
	ATTACCO FILETTATO THREADED ANSCHLUSS CONNEXION ROSCA CONEXÃO ROSCADA	1/4
	PRESSIONE DI FUNZIONAMENTO OPERATING PRESSURE BETRIEBSDRUCK PRESSION DE SERVICE PRESIÓN DE EJERCICIO PRESSÃO DE OPERAÇÃO	1 ÷ 10 bar
	FORZA DI ATTIVAZIONE ACTIVATION FORCE BETÄTIGUNGSKRAFT FORCE D'ACTUATION FUERZA DE ACTIVACIÓN FORÇA ACTIVAÇÃO	20 N

Materiali e Componenti	IT
1 Corpo in acciaio INOX 316 L (1.4404) 2 Spola in acciaio INOX 316 L (1.4404) 3 Guarnizioni in PUR e O-Ring FKM	
Component Parts and Materials	GB
1 Stainless Steel 316 L (1.4404) body 2 Stainless Steel 316 L (1.4404) spool 3 PUR seals and FKM O-Ring	
Komponenten und Materialien	DE
1 Körper Edelstahl AISI 316 L (1.4404) 2 Schieber AISI 316 L (1.4404) 3 PUR Dichtung und FKM O-Ring	
Matériaux et Composants	FR
1 Corps en Acier Inoxydable 316 L (1.4404) 2 Tiroir en Acier Inoxydable 316 L (1.4404) 3 Joints en PUR et O-Ring en FKM	
Materiales y Componentes	ES
1 Cuerpo en Acero Inoxidable 316 L (1.4404) 2 Corredera en Acero Inoxidable 316 L (1.4404) 3 Juntas en PUR y O-Ring en FKM	
Materiais e Componentes	PT
1 Corpo em Aço Inoxidável 316 L (1.4404) 2 Carretel em Aço Inoxidável 316 L (1.4404) 3 Vedações em PUR e O-Ring em FKM	

3/2 Vie - Ways - Wege - Voies - Vías - Vias

MONOSTABILE CON RITORNO A MOLLA

MONOSTABLE SPRING RETURN
 MONOSTABIL MIT FEDERRÜCKSTELLUNG
 MONOSTABLE À RAPPEL PAR RESSORT
 MONOESTABLE CON RETORNO POR MUELLE
 MONOESTÁVEL COM RETORNO POR MOLA



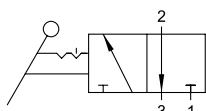
Codice Code Nummer Code Código Código	Vie Ways Wege Voies Vías Vias	Funzione Function Funktion Fonction Función Funções	Misura Size Größe Dimension Medida Tamanho	Pack.
X1V L0 3 NC 03	3/2	NC	1/4	1



3/2 Vie - Ways - Wege - Voies - Vías - Vias

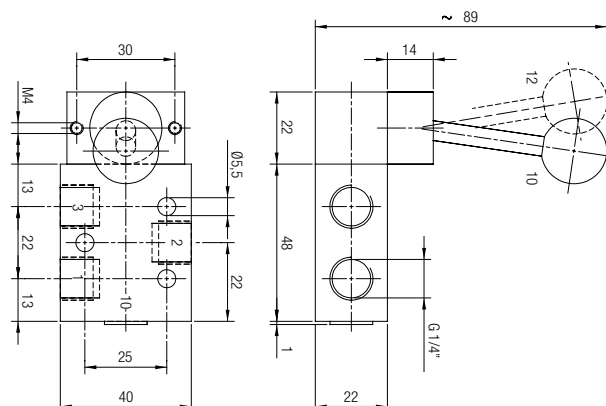
BISTABILE

TWO STABLE POSITIONS
 BISTABIL
 BISTABLE
 BIESTABLE
 BIESTÁVEL



Codice Code Nummer Code Código Código	Vie Ways Wege Voies Vías Vias	Misura Size Größe Dimension Medida Tamanho	Pack.
X1V L1 3 NC 03	3/2	1/4	1

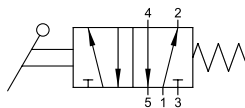
X1V L0 3 NC 03 X1V L1 3 00 03



5/2 Vie - Ways - Wege - Voies - Vías - Vias

MONOSTABILE CON RITORNO A MOLLA

MONOSTABLE SPRING RETURN
 MONOSTABIL MIT FEDERRÜCKSTELLUNG
 MONOSTABLE À RAPPEL PAR RESSORT
 MONOESTABLE CON RETORNO POR MUELLE
 MONOESTÁVEL COM RETORNO POR MOLA



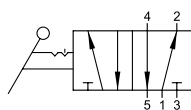
Codice Code Nummer Code Código Código	Vie Ways Wege Voies Vías Vias	Misura Size Größe Dimension Medida Tamanho	Pack.
X1V L0 5 00 03	5/2	1/4	1



5/2 Vie - Ways - Wege - Voies - Vías - Vias

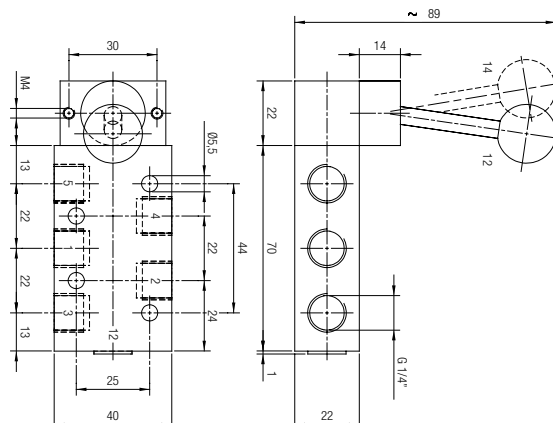
BISTABILE

TWO STABLE POSITIONS
 BISTABIL
 BISTABLE
 BIESTABLE
 BIESTÁVEL



Codice Code Nummer Code Código Código	Vie Ways Wege Voies Vías Vias	Misura Size Größe Dimension Medida Tamanho	Pack.
X1V L1 5 00 03	5/2	1/4	1

X1V L0 5 00 03 X1V L1 5 00 03



5/3 Vie - Ways - Wege - Voies - Vías - Vias

MONOSTABILE CON RITORNO A MOLLA

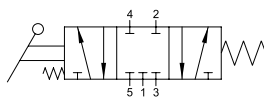
MONOSTABLE SPRING RETURN

MONOSTABIL MIT FEDERRÜCKSTELLUNG

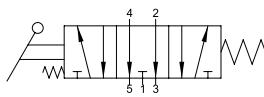
MONOSTABLE À RAPPEL PAR RESSORT

MONOESTABLE CON RETORNO POR MUELLE

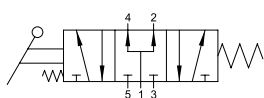
MONOESTÁVEL COM RETORNO POR MOLA



CC



OC



PC



Codice Code Nummer Code Código Código	Vie Ways Wege Voies Vías Vias	Funzione Function Funktion Fonction Función Funções	Misura Size Größe Dimension Medida Tamanho	Pack.
X1V L0 7 CC 03	5/3	CC	1/4	1
X1V L0 7 OC 03	5/3	OC	1/4	1
X1V L0 7 PC 03	5/3	PC	1/4	1

5/3 Vie - Ways - Wege - Voies - Vías - Vias

STABILE A 3 POSIZIONI

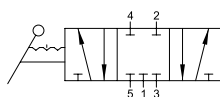
3 STABLE POSITIONS

HEBEL - 3 POSITIONEN

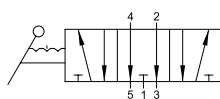
LEVIER - 3 POSITIONS

ESTABLE 3 POSICIONES

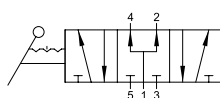
ESTÁVEL DE 3 POSIÇÕES



CC



OC



PC

X1V L0 7 CC 03 X1V L0 7 OC 03 X1V L0 7 PC 03
X1V L2 7 CC 03 X1V L2 7 OC 03 X1V L2 7 PC 03

Codice Code Nummer Code Código Código	Vie Ways Wege Voies Vías Vias	Funzione Function Funktion Fonction Función Funções	Misura Size Größe Dimension Medida Tamanho	Pack.
X1V L2 7 CC 03	5/3	CC	1/4	1
X1V L2 7 OC 03	5/3	OC	1/4	1
X1V L2 7 PC 03	5/3	PC	1/4	1

