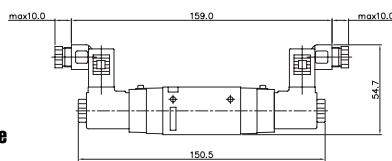
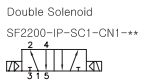
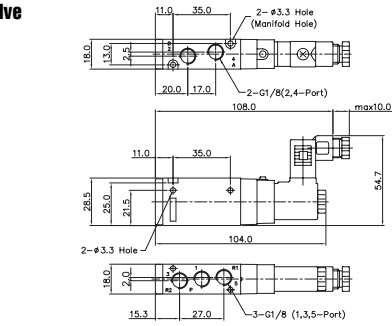
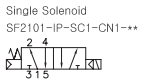


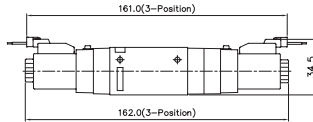
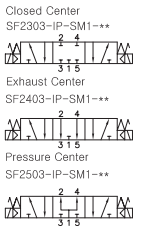
# Solenoid & Pilot Actuated Spool Valves

Port Thread 1/8

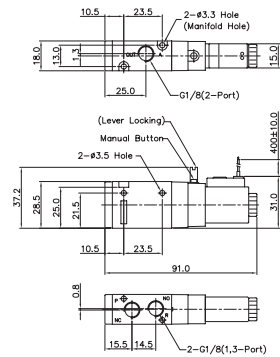
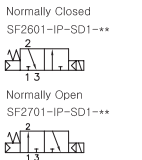
## 5Port 2Position Solenoid Valve



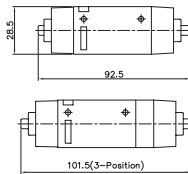
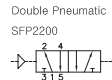
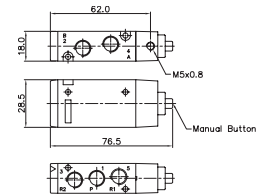
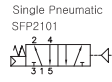
## 5Port 3Position Solenoid Valve



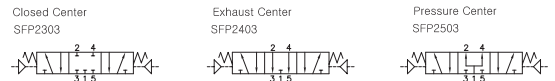
## 3Port 2Position Solenoid Valve



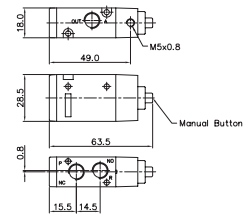
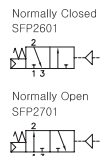
## 5Port 2Position Pneumatic Valve



## 5Port 3Position Pneumatic Valve



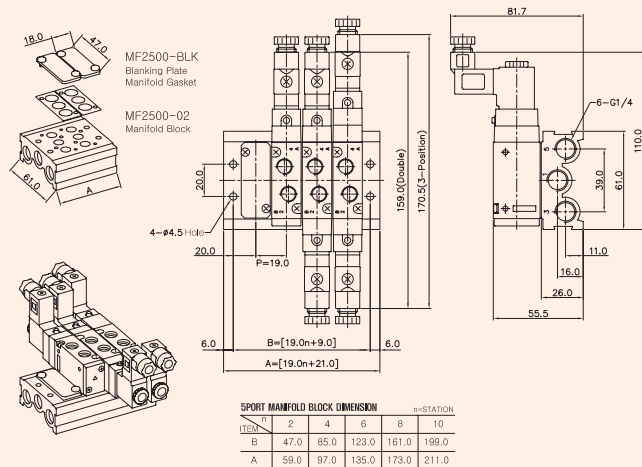
## 3Port 2Position Pneumatic Valve



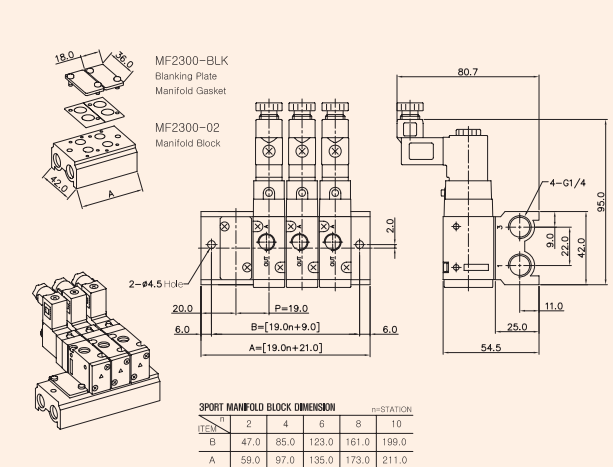
# MF2000 MANIFOLD BLOCK

(SF2000 Solenoid & Pneumatic Valve Use)

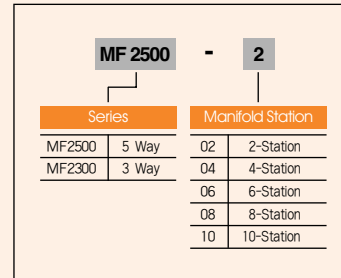
## 5-Port Manifold Block MF2500-4



## 3-Port Manifold Block MF2300-4



### Manifold Block Ordering Code



### Blanking Plate Ordering Code

