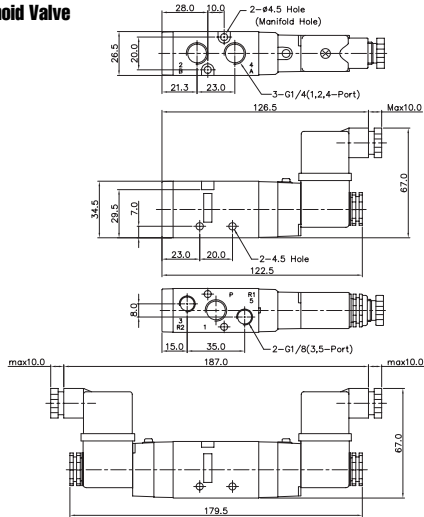


Solenoid & Pilot Actuated Spool Valves

Port Thread 1/4

5Port 2Position Solenoid Valve

Single Solenoid
SF4101-IP-SC2-CN2-*

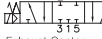


Double Solenoid
SF4200-IP-SD2-*

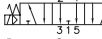


5Port 3Position Solenoid Valve

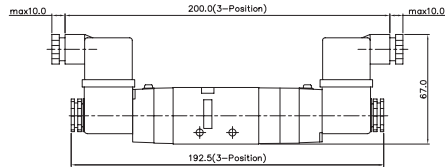
Closed Center
SF4303-IP-SC2-CN2-*



Exhaust Center
SF4403-IP-SC2-CN2-*

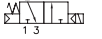


Pressure Center
SF4503-IP-SC2-CN2-*

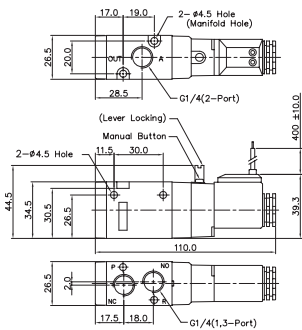
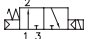


3Port 2Position Solenoid Valve

Normally Closed
SF4601-IP-SD2-*

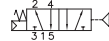


Normally Open
SF4701-IP-SD2-*

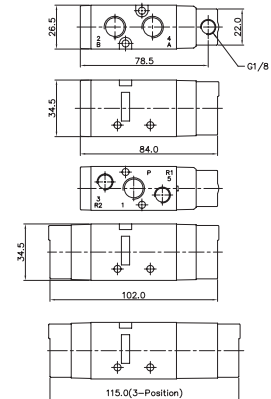
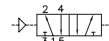


5Port 2Position Pneumatic Valve

Single Pneumatic
SFP4101

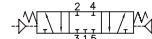


Double Pneumatic
SFP4200

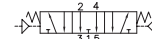


5Port 3Position Pneumatic Valve

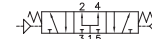
Closed Center
SFP4303



Exhaust Center
SFP4403



Pressure Center
SFP4503

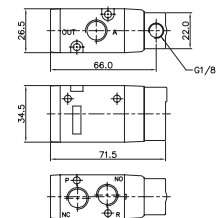


3Port 2Position Pneumatic Valve

Normally Closed
SFP4601



Normally Open
SFP4701



MF4000 MANIFOLD BLOCK

(SF4000 Solenoid & Pneumatic Valve Use)

Manifold Block Ordering Code

MF 4500 - 2

Series	Manifold Station
MF4500	5 Way
MF4300	3 Way

Manifold Station	Series
02	2-Station
04	4-Station
06	6-Station
08	8-Station
10	10-Station

Blanking Plate Ordering Code

MF4500-BLK

Blanking Plate. (Material: SCP1)

Manifold Gasket. (Material: NBR)

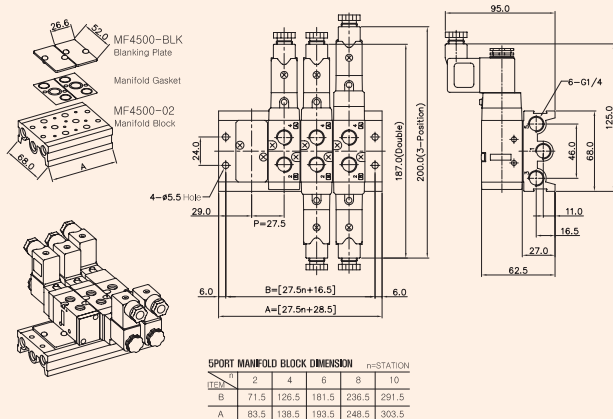
MF4300-BLK

Blanking Plate. (Material: SCP1)

Manifold Gasket. (Material: NBR)

5-Port Manifold Block

MF4500-4



3-Port Manifold Block

MF4300-4

