

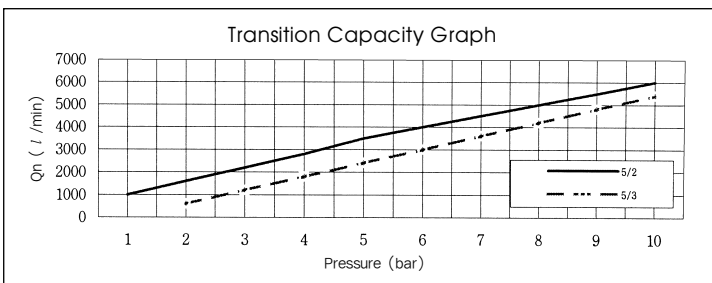
SF6000. 1/2

"F" FLEXIBLE Series
Solenoid / Pneumatic Valves

- 5/2, 5/3 - 1/2
- 36mm Body Width
- Transition Flow 3500ℓ/min (5bar)

SPECIFICATION

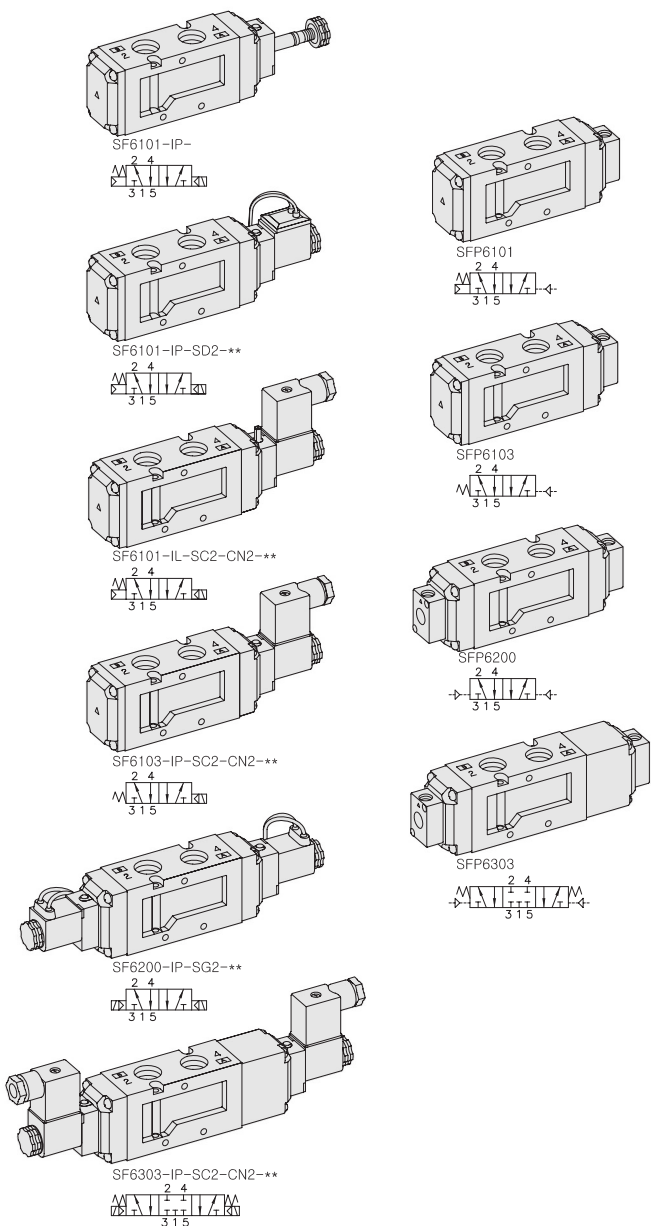
| ITEM | SERIES | SOLENOID, PNEUMATIC | |
|--|--------|---|-------------------|
| | | 5 Port 2 Position | 5 Port 3 Position |
| Fluids | | Compressed Air & Inert Gases | |
| Pressure(bar) | | 1.5~10.0 | 2.0~10.0 |
| Eff. Section Area(mm ²)-5bar | | 65.0 | 50.0 |
| Ambient & Fluid Temp. | | 5~60°C (41~140°F) | |
| Response Time(5bar) | | 30ms or Less | 40ms or Less |
| Max. Working Frequency | | 2c/sec | 1c/sec |
| Lubrication | | Not Required(Use ISO VG32 #) | |
| Manual Override | | Push Button(Standard), Lever Lock(Option) | |
| Coil Insulation Class | | F-Class or Equivalent | |
| Permissible Voltage Variation | | ±10% of Rated Voltage | |
| Off Min. Residual Voltage | | AC:20% or Less / DC:10% or Less | |
| Power Consumption | | Holding-AC:5.5VA(60Hz) / DC:2.5W | |



The Material of Parts

| | |
|-----------------------------------|------------------------------------|
| ■ Valve Body : Die-Cast Aluminium | ■ Pilot Parts : Glass Filled Nylon |
| ■ Spool : Aluminium | ■ Armature : Stainless Steel |
| ■ Seals : NBR | ■ Armature Seals : Viton |
| ■ Spring : Stainless | |
| ■ Cap : Zinc Pressure Die-Cast | |

* The specification on each item can be amended without any prenotice to improve a performance.
* The specification on each item can be different from actual specification.

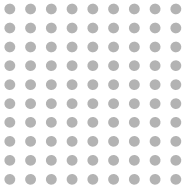


** : Voltage Selection (see page 80)

ORDERING NO.

SF6 1 0 1 - I P - SC2 - CN2 - A2

| Valve Series | Function | Port Size & Thread | Return Method | Int/Ext. Pilot | Manual Operator | Solenoid Coil Type | Connector Type | Voltage |
|---------------------------|-----------------------|--------------------|----------------|------------------|--------------------|-----------------------------------|---|------------|
| SF6 : Solenoid Valve | 1 5/2 Single | 0 G 1/2 | 0 None | 1 Internal Pilot | 0 None | 0 None | 0 None | 0 None |
| | 2 5/2 Double | 1 NPT 1/2 | 1 Air + Spring | | P Push Non-Locking | SC2 3 Pin Connector Coil | CN2 Normal Connector | A2 AC 220V |
| | 3 5/3 Closed Center | | 2 Air | | L Lever Locking | SG2 Grommet/Flying Leads | CD2 Connector With LED | A1 AC 110V |
| | 4 5/3 Open Center | | 3 Spring | | | SD2 Grommet/Flying Leads With LED | C22 Connector With LED & Surge Suppressor | A4 AC 24V |
| SFP6 : Pneumatic Valve | 5 5/3 Pressure Center | | | | | | D4 DC 24V | D2 DC 12V |

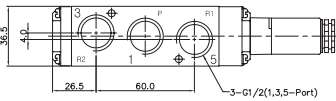
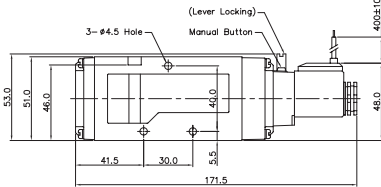
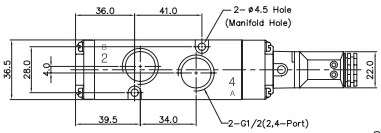
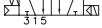


Solenoid & Pilot Actuated Spool Valves

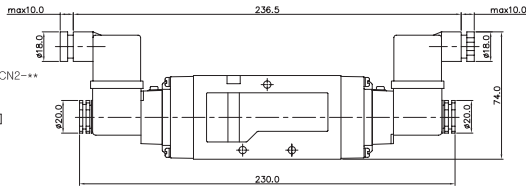
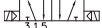
Port Thread 1/2

5Port 2Position Solenoid Valve

Single Solenoid
SF6101-IP-SD2-*



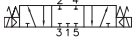
Double Solenoid
SF6200-IP-SC2-CN2-*



5Port 3Position Solenoid Valve

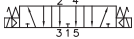
Closed Center

SF6303-IP-SC2-CN2-*



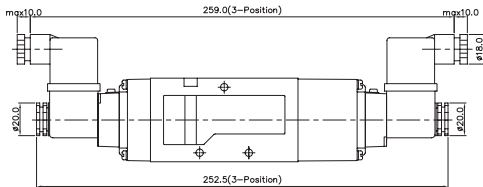
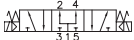
Exhaust Center

SF6403-IP-SC2-CN2-*



Pressure Center

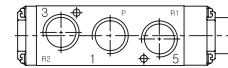
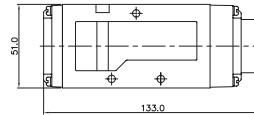
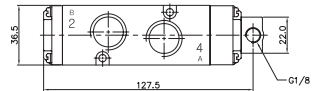
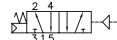
SF6503-IP-SC2-CN2-*



5Port 2Position Pneumatic Valve

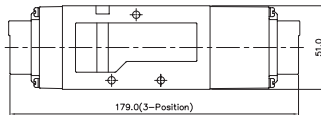
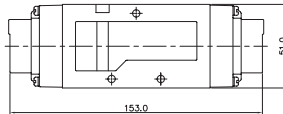
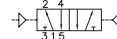
Single Pneumatic

SFP6101



Double Pneumatic

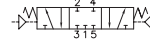
SFP6200



5Port 3Position Pneumatic Valve

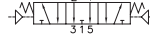
Closed Center

SFP6303



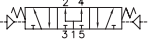
Exhaust Center

SFP6403



Pressure Center

SFP6503



Manifold Block Ordering Code

| | | | | | |
|---------|------------------|----|------------|---|--|
| MF 6500 | | - | | 2 | |
| Series | Manifold Station | | | | |
| MF6500 | 5 Way | 02 | 2-Station | | |
| | | 04 | 4-Station | | |
| | | 06 | 6-Station | | |
| | | 08 | 8-Station | | |
| | | 10 | 10-Station | | |

Blanking Plate Ordering Code

MF6500-BLK

Blanking Plate.
(Material: SCP1)

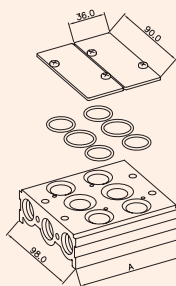
Gasket O-Ring
(Material: NBR)

MF6000 MANIFOLD BLOCK

(SF6000 Solenoid & Pneumatic Valve Use)

5-Port Manifold Block

MF6500-4



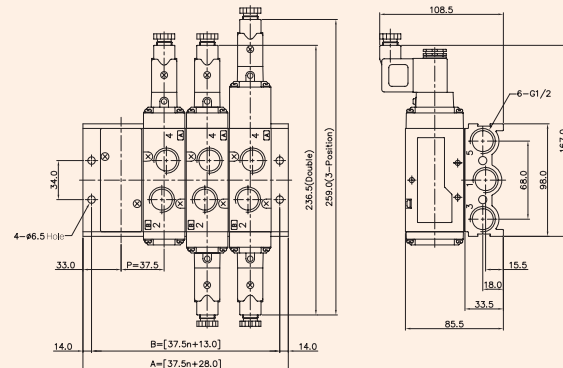
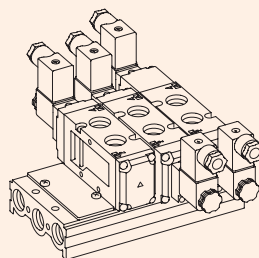
MF6500-BLK

Blanking Plate

Gasket O-Ring

MF6500-02

Manifold Block



| 5PORT MANIFOLD BLOCK DIMENSION | | n=STATION | | | | |
|--------------------------------|-------|-----------|-------|-------|-------|----|
| ITEM | 1 | 2 | 4 | 6 | 8 | 10 |
| B | 88.0 | 163.0 | 238.0 | 313.0 | 388.0 | |
| A | 103.0 | 178.0 | 253.0 | 328.0 | 403.0 | |