

EXTENSIONS

AL41 BLACK

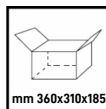
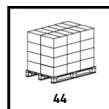
ART. AL41/315/B GS

type
**extension with automatic
 retraction**

length
15

Cable type
PVC

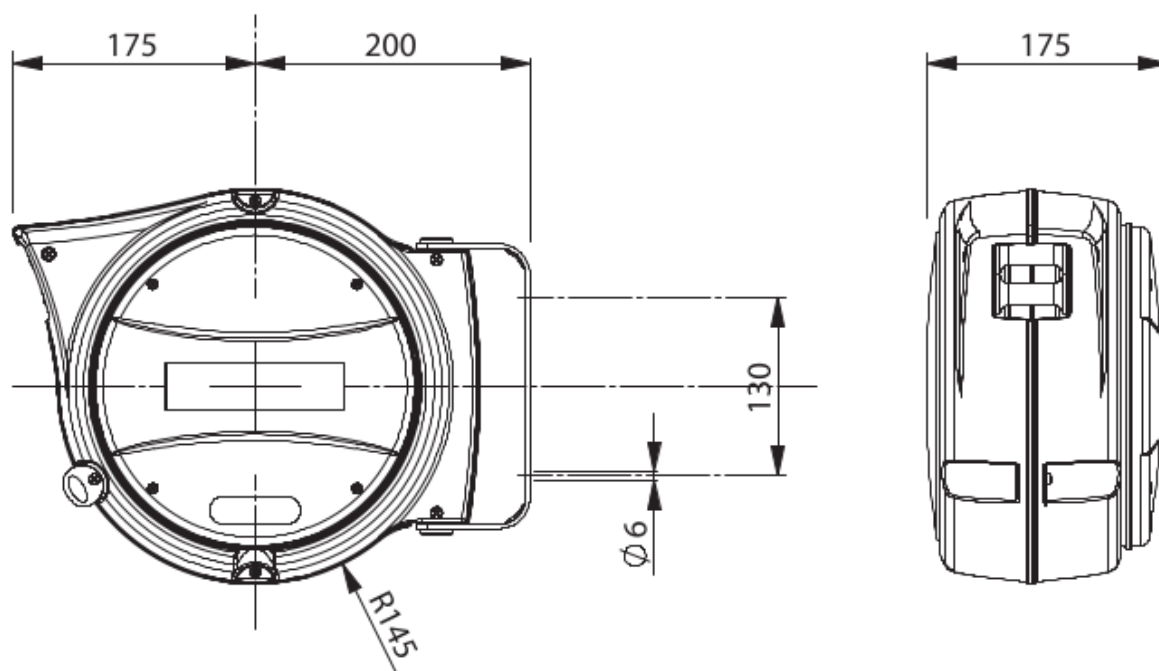
V max
500



TECHNICAL DATA

Article	Color	Description	Cable length (m)	Reel cable length (m)	Cut length (m)	Cable type	Indentation	Sockets	Wound cable capacity (@20°C)	Unwound cable capacity (@20°C)	Thermal switch	V max	Number conductors	Cable section
AL41/315 /B GS	BLACK	extension with automatic retraction	15	14	1	PVC	AUTOMATIC	Schuko plug and socket	1200	1800	YES	500	3 G	1.5

OVERALL DIMENSIONS



Technical characteristics of the cable reel

- Die-cast aluminum structure painted with epoxy powders.
- Adjustable bracket for fixing.
- Rack cable stop device, insertable every 50 cm.
- Double ground contact.
- Ambient temperature of use: -5 / + 50 ° C.