

EXTENSIONS

SERIES AL

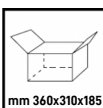
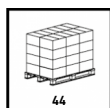
ART. AL41/315

type
Extension with automatic retraction

length
15

Cable type
PVC

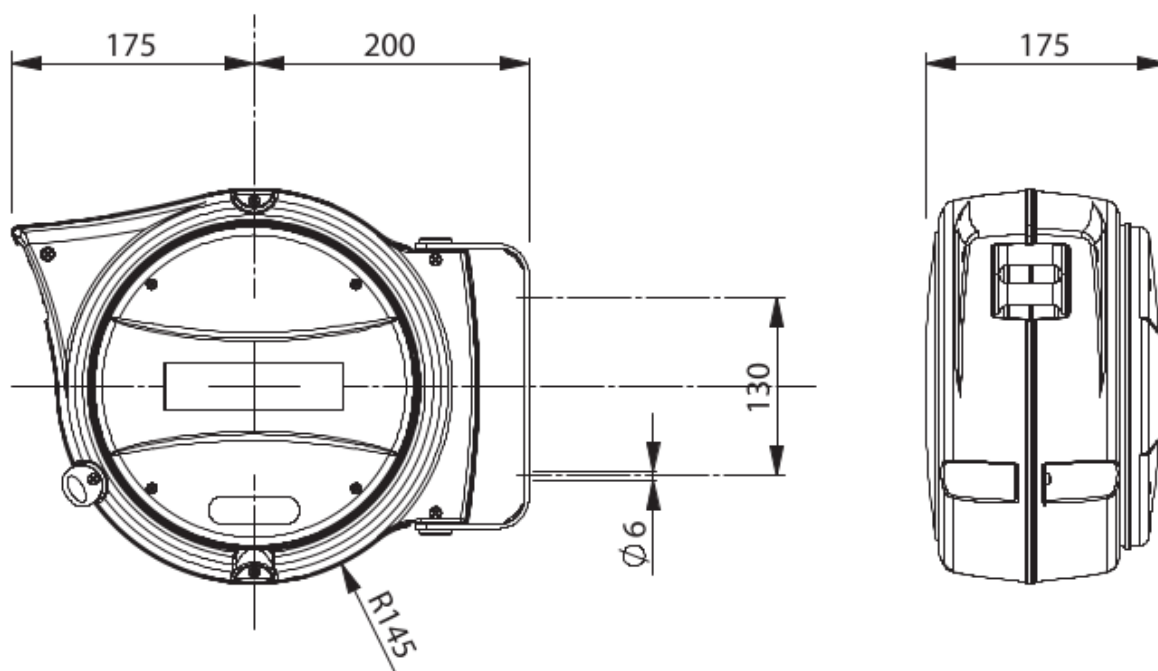
V max
500



TECHNICAL DATA

Article	Color	Description	Cable length (m)	Reel cable length (m)	Cut length (m)	Cable type	Indentation	Sockets	Wound cable capacity (@20°C)	Unwound cable capacity (@20°C)	Thermal switch	V max	Number conductors	Cable section
AL41/315	Silver	Extension with automatic retraction	15	14	1	PVC	AUTOMATIC	NO	1200	1800	NO	500	3 G	1.5

OVERALL DIMENSIONS



Technical characteristics of the cable reel

- Die-cast aluminum structure painted with epoxy powders.
- Adjustable bracket for fixing.
- Rack cable stop device, insertable every 50 cm.
- Double ground contact.
- Ambient temperature of use: $-5 / + 50^{\circ} \text{C}$.