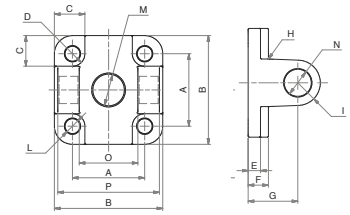


Toebehoren Unitop

Unitop Achterscharnier

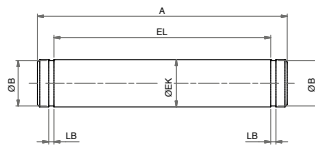


maatvoering tabel (maten in mm)														
cilinder	A	B	C	D	E	F	G	H	I	L	M	N	P	Q
Ø32	32	48	13,5	5,5	5,5	9	22	2,5	10	6,6	14	12	45	10
Ø40	42	58	13,5	5,5	5,5	9	25	2,5	12,5	6,6	14	14	52	12
Ø50	50	66	15,5	7,5	6,5	11	27	2,5	12,5	9	18	14	60	12
Ø63	62	83	18	7,5	6,5	11	32	4	15	9	18	18	70	16
Ø80	82	102	19	9	10	13	36	4	15	11	23	18	90	16
Ø100	103	123	19	9	10	15	41	4	20	11	28	23	110	20



	Ø12	Ø16	Ø20	Ø25	Ø32	Ø40	Ø50	Ø63	Ø80	Ø100
Staal verzinkt	ACP 16	ACP 20	ACP 25	ACP 32	ACP 40	ACP 50	ACP 63	ACP 80	ACP 100	ACP 100

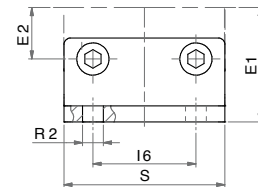
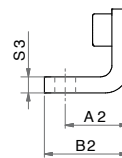
Wordt geleverd inclusief pen AA4



Unitop Voetmontage



maatvoering tabel (maten in mm)								
cilinder	A2	B2	E1	E2	I6	ØR2	S	S3
Ø12-Ø16	13	17,5	22	9	18	5,5	30	3
Ø20	16	22	27	11	22	6,5	36	4
Ø25	16	22	30	13	26	6,5	40	4
Ø32	18	26	32	16	32	6,5	50	5
Ø40	20	28	42,5	21	42	9	60	5
Ø50	24	32	47	25	50	9	68	6
Ø63	27	39	59,5	31	62	11	84	6
Ø80	30	42	62,5	41	82	11	102	8
Ø100	33	45	78	51,5	103	13,5	123	8

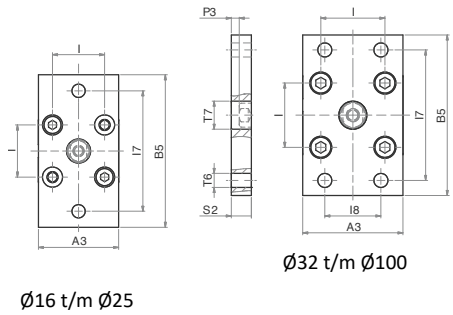


	Ø12-Ø16	Ø20	Ø25	Ø32	Ø40	Ø50	Ø63	Ø80	Ø100
staal verzinkt	APD 16	APD 20	APD 25	APD 32	APD 40	APD 50	APD 63	APD 80	APD 100

Unitop Montageflens



maatvoering tabel (maten in mm)									
cilinder	A3	B5	I7	I8	I	ØT6	ØT7	P3	S2
Ø12-Ø16	29	55	43	-	18	5,5	10	5,5	10
Ø20	36	70	55	-	22	6,5	12	5,5	10
Ø25	40	76	60	-	26	6,5	12	4,5	10
Ø32	50	80	65	32	32	7	14	4	10
Ø40	60	102	82	36	42	9	14	3,5	10
Ø50	68	110	90	45	50	9	18	4,5	12
Ø63	87	130	110	50	62	9	18	7,5	15
Ø80	107	160	135	63	82	12	23	7	15
Ø100	128	190	163	75	103	14	28	5	15



Ø16 t/m Ø25

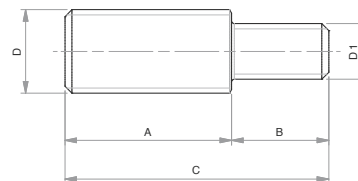
Ø32 t/m Ø100

	Ø12	Ø16	Ø20	Ø25	Ø32	Ø40	Ø50	Ø63	Ø80	Ø100
Aluminium	AFL 12	AFL 16	AFL 20	AFL 25	AFL 32	AFL 40	AFL 50	AFL 63	AFL 80	AFL 100

Unitop Verloopnippel



maatvoering tabel (maten in mm)					
cilinder	A	B	C	D	D1
NP06-03	16	6,5	22,5	M6x1	M3
NP06-04	15	8	23	M6x1	M4
NP08-04	20	10	30	M8x1,25	M4
NP08-05	20	10	30	M8x1,25	M5
NP10-05	22	12	34	M10x1,25	M5
NP10-06	22	12	34	M10x1,25	M6
NP12-08	24	14	38	M12x1,25	M8
NP16-08	32	14	46	M16x1,5	M8
NP16-10	32	15	47	M16x1,5	M10
NP20-12	40	20	60	M20x1,5	M12



	Ø12	Ø16		Ø20-25		Ø32-40	Ø50-Ø63		Ø80	Ø100
roestvast staal	NP06-03	NP06-04	NP08-04	NP08-05	NP10-05	NP10-06	NP12-08	NP16-08	NP16-10	NP20-12